

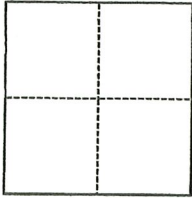
CORNER RECORD

Agency Index

CR-23-253

Document Number

City of LODI County of SAN JOAQUIN, California
Brief Legal Description LOT 3, M.&P. 43-129, S.J.C.R.

CORNER TYPE

- ☐ Government Corner ☐ Control
☐ Meander ☒ Property
☐ Rancho ☐ Other

Date of Survey _____

COORDINATES (Optional)

N. _____ E. _____

Elevation _____

Units ☐ Metric ☐ U.S. Survey Foot

Horizontal Datum _____

Zone _____ Epoch Date _____

Vertical Datum _____

☐ Complies with Public Resources Code §§8801-8819☐ Complies with Public Resources Code §§8890-8902

PLS Act Ref.:

☐ 8765(d)☐ 8771☐ 8773☐ Other:Corner/
Monument:☒ Left as found☒ Established☐ Rebuilt☐ Pre-Construction☐ Found and tagged☐ Reestablished☐ Referenced☐ Post-Construction

Narrative of corner identified and monument as found, set, reset, replaced, or removed:

☒ See sheet #2 for description(s):

SEE SHEET 2 OF 2 FOR MONUMENTS FOUND AND SET.

SURVEYOR'S STATEMENT

This Corner Record was prepared by me or under my direction in conformance with

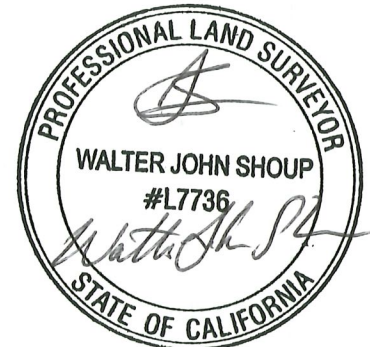
the Professional Land Surveyors' Act on

10/23/2023

Signed

Walter John Shoup

P.L.S. or P.C.E. No.

L-7736**COUNTY SURVEYOR'S STATEMENT**

This Corner Record was received

October 24, 2023

and examined and filed

November 7, 2023

Signed

James E. Hart

P.L.S. or P.C.E. No.

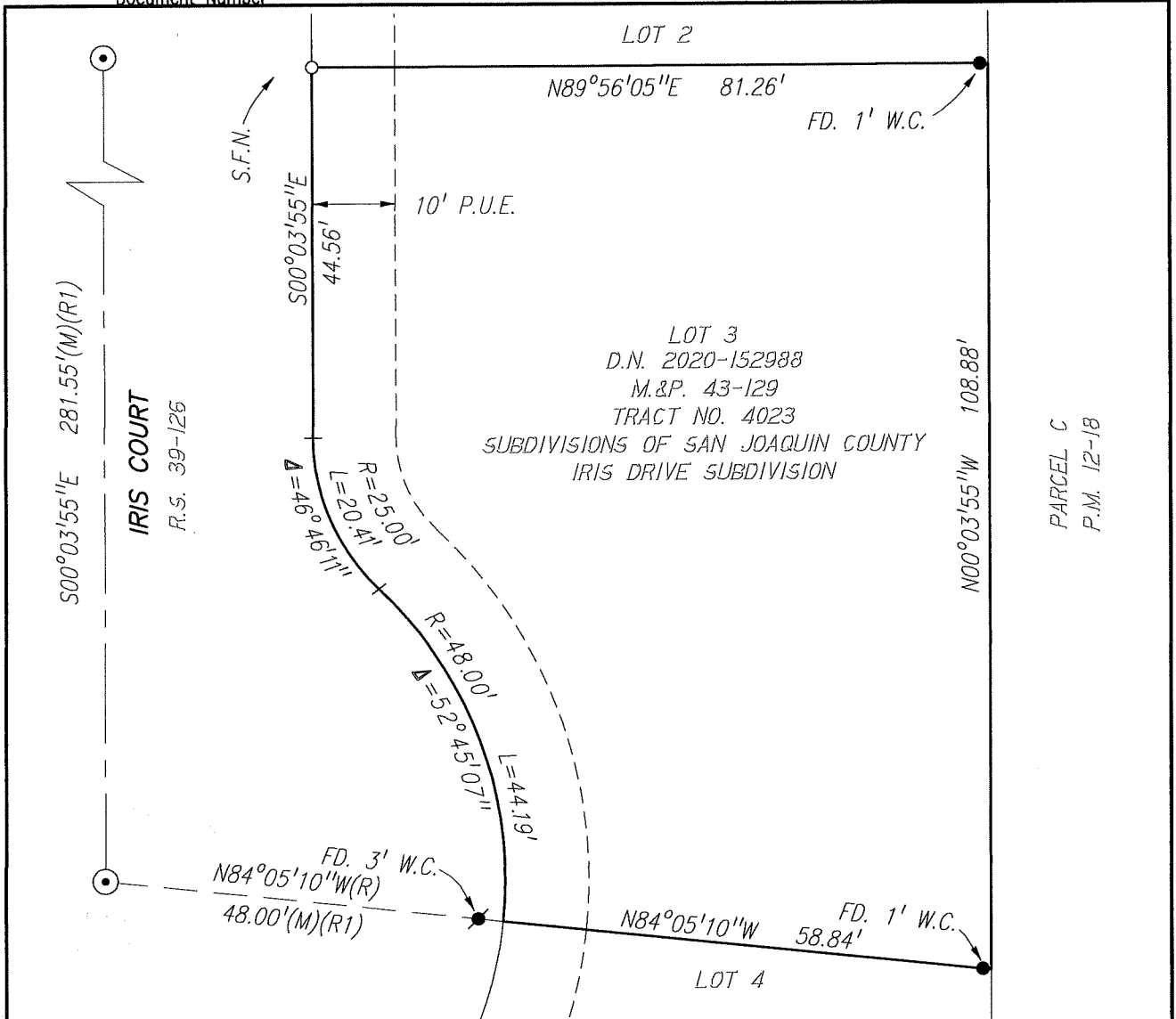
8657

Title

County Surveyor

County Surveyor's Comment



**MONUMENTS FOUND:**

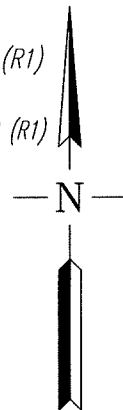
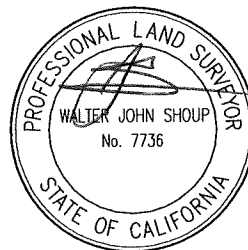
- SET 1.25" COPPERWELD DISK STAMPED "PLS 7736"
- FD. 3/4" IRON ROD CAPPED & STAMPED "BAUMBACH & PIAZZA ELSON PLS 7889" PER (R1)
- FD. 1.25" BRASS DISK STAMPED "SURVEY LS 7889" PER (R1), UNLESS OTHERWISE NOTED.
- ⊙— FD. 3/4" IRON ROD IN MON. BOX CAPPED & STAMPED "BAUMBACH & PIAZZA ELSON PLS 7889" PER (R1)

LEGEND:

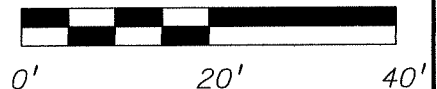
COR. CORNER
D.N. DOCUMENT NUMBER, S.J.C.R.
FD. FOUND
MON. MONUMENT
M.&P. MAPS AND PLATS, BOOK-PAGE, S.J.C.R.
P.M. PARCEL MAP, BOOK-PAGE, S.J.C.R.
P.U.E. PUBLIC UTILITY EASEMENT
(R) RADIAL
R.S. RECORD OF SURVEY, BOOK-PAGE, S.J.C.R.
S.F.N. SEARCHED FOUND NOTHING
S.J.C.R. SAN JOAQUIN COUNTY RECORDS
W.C. WITNESS CORNER

REFERENCES:

- (R1) M.&P. 43-129, S.J.C.R.
- (R2) R.S. 39-126, S.J.C.R.
- (R3) P.M. 12-18, S.J.C.R.



SCALE: 1"=20'



Scale: 1"=20'

Job No.: 23-146

CORNER RECORD**EXHIBIT MAP**

Page 2 of 2

Date: 10/16/23

DWG: 23146CR-PRE.DWG