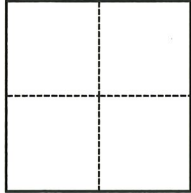


CORNER RECORD

Agency Index CR-23-246

Document Number _____

City of Lodi County of San Joaquin, CaliforniaBrief Legal Description Lot 2 of 13-M.&P.-08**CORNER TYPE****COORDINATES (Optional)**

- Government Corner Control
 Meander Property
 Rancho Other

N. _____ E. _____

Elevation _____

Units Metric U.S. Survey Foot

Horizontal Datum _____

Zone _____ Epoch Date _____

Date of Survey September 12, 2023

Vertical Datum _____

 Complies with Public Resources Code §§8801-8819 Complies with Public Resources Code §§8890-8902PLS Act Ref.: 8765(d) 8771 8773 Other:Corner/Monument: Left as found Established Rebuilt Pre-Construction Found and tagged Reestablished Referenced Post-Construction

Narrative of corner identified and monument as found, set, reset, replaced, or removed:

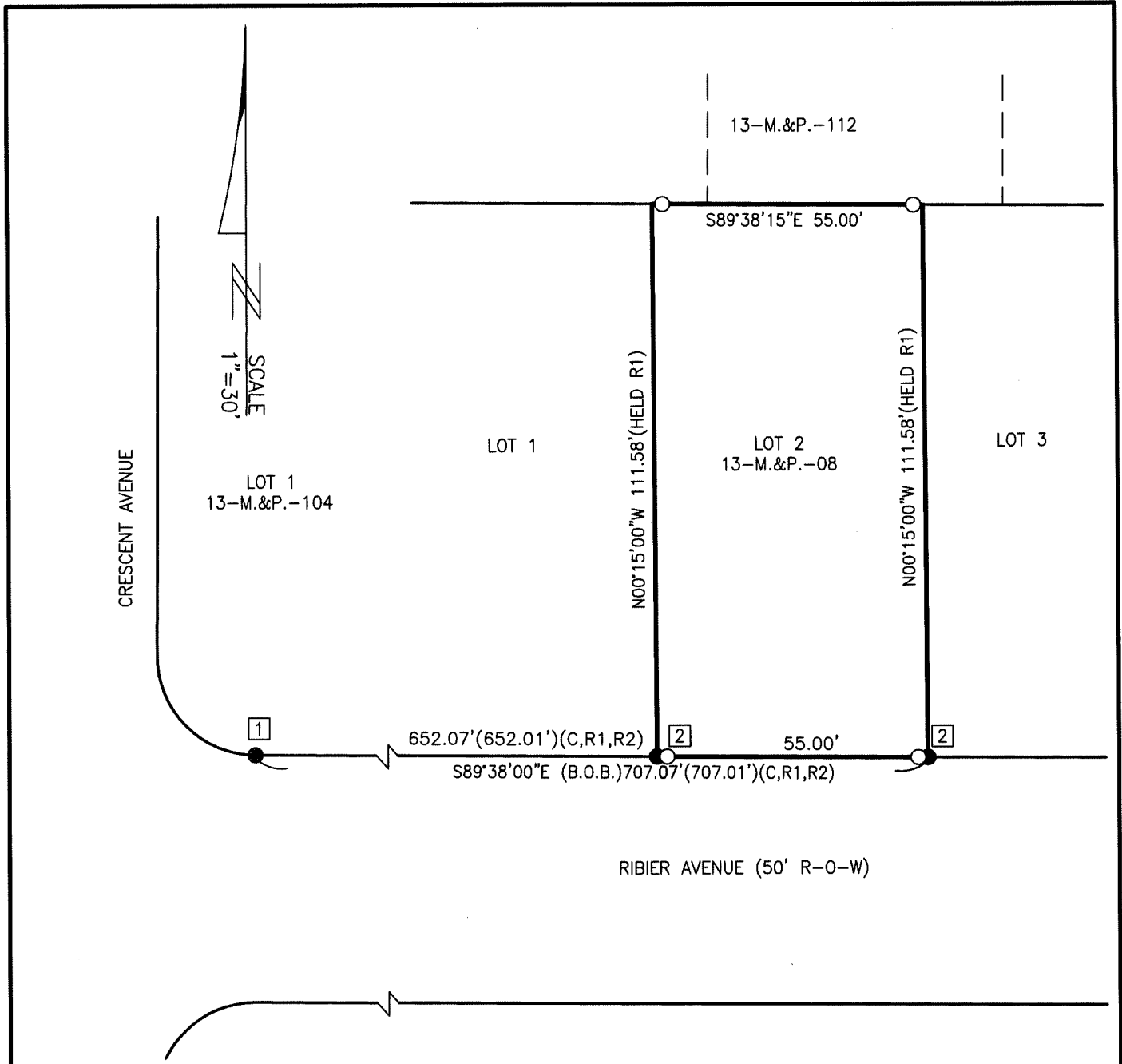
 See sheet #2 for description(s):

Corners searched for along rear line. Nothing found including at east & west ends terminating at Hutchins Street and Crescent Avenue.

SURVEYOR'S STATEMENT

This Corner Record was prepared by me or under my direction in conformance with

the Professional Land Surveyors' Act on October 2, 2023Signed [Signature] P.L.S. or R.C.E. No. 8080**COUNTY SURVEYOR'S STATEMENT**This Corner Record was received October 13, 2023and examined and filed October 31, 2023Signed James E. Hart P.L.S. or R.C.E. No. 8657Title County Surveyor**County Surveyor's Comment**



FOUND MONUMENT TABLE:

- 1 FOUND CORRODED 1" IRON ROD—NO TAG. ACCEPTED PER (R2).
- 2 FOUND 1" IRON PIPE—NO TAG. ACCEPTED AS MARKING CORNER PER (R1).

REFERENCES:

- (R1) M.&P. 13-08, S.J.C.R.
- (R2) M.&P. 13-104, S.J.C.R.
- (C) CALCULATED FROM RECORD DATA

LEGEND:

- S.J.C.R. SAN JOAQUIN COUNTY RECORDS
- M.&P. MAPS & PLATS, VOLUME - PAGE, S.J.C.R.
- FOUND MONUMENT AS NOTED
- SET 3/4" BY 30" LONG REBAR WITH PLASTIC CAP STAMPED "PLS8080" 1.00' FROM PROPERTY CORNER ALONG REAR OR FRONT PROPERTY LINE.

BASIS OF BEARINGS:

THE NORTH LINE OF RIBIER AVENUE AS SHOWN ON M.&P. 13-08, BEING S89°38'00"E.