

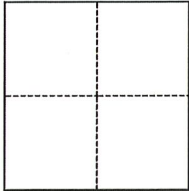
# CORNER RECORD

Agency Index CR-23-242  
Document Number \_\_\_\_\_

City of UNINCORPORATED AREA County of SAN JOAQUIN, California

Brief Legal Description 5/8" REBAR PER BOOK 13 OF PARCEL MAPS AT PAGE 65

### CORNER TYPE



- Government Corner
- Meander
- Rancho
- Control
- Property
- Other

Date of Survey 09/25/2023

### COORDINATES (Optional)

N. \_\_\_\_\_ E. \_\_\_\_\_

Elevation \_\_\_\_\_

Units  Metric  U.S. Survey Foot

Horizontal Datum \_\_\_\_\_

Zone \_\_\_\_\_ Epoch Date \_\_\_\_\_

Vertical Datum \_\_\_\_\_

Complies with Public Resources Code §§8801-8819

Complies with Public Resources Code §§8890-8902

PLS Act Ref.:  8765(d)  8771  8773  Other:

Corner/Monument:  Left as found  Established  Rebuilt  Pre-Construction

Found and tagged  Reestablished  Referenced  Post-Construction

Narrative of corner identified and monument as found, set, reset, replaced, or removed:

See sheet #2 for description(s):

*FOUND 5/8" REBAR AT SOUTHEAST CORNER OF PARCEL "A" PER PRE-CONSTRUCTION CORNER RECORD CR-23-129 (3/4" PIPE PER BOOK 13 OF PARCEL MAPS AT PAGE 65). FOUND FOUR (4) REFERENCE POINTS, AS SHOWN ON SIDE 2, OUTSIDE OF CONSTRUCTION LIMITS.*

### SURVEYOR'S STATEMENT

This Corner Record was prepared by me or under my direction in conformance with

the Professional Land Surveyors' Act on SEPTEMBER 26, 2023

Signed James N. Landrum P.L.S. or R.C.E. No. LS 5837



### COUNTY SURVEYOR'S STATEMENT

This Corner Record was received October 9, 2023

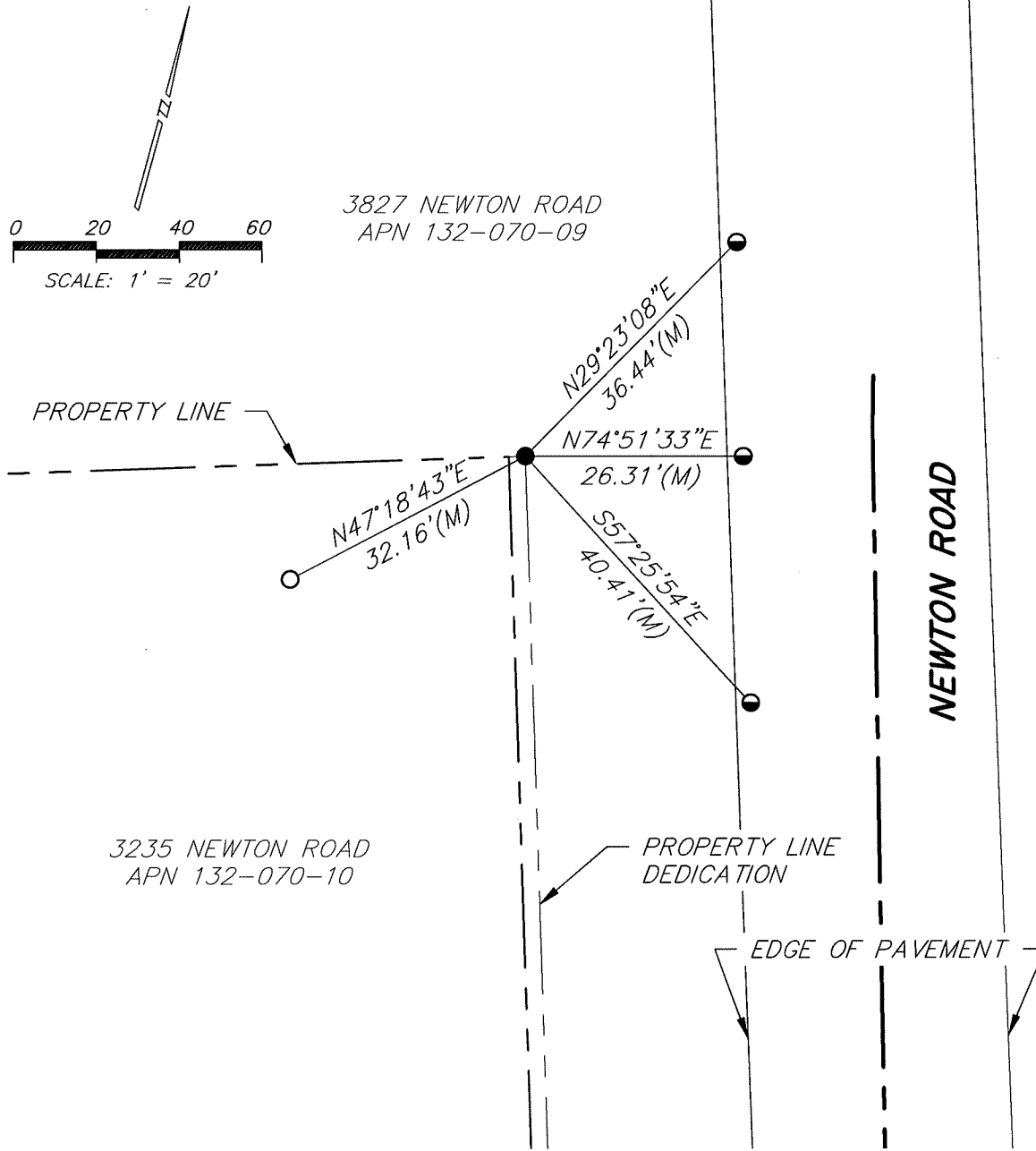
and examined and filed October 30, 2023

Signed James E. Hart P.L.S. or R.C.E. No. 8657

Title County Surveyor

County Surveyor's Comment





**LEGEND**

- FOUND 5/8" REBAR
- FOUND MAG NAIL UNLESS OTHERWISE SHOWN
- FOUND 3/4" IRON PIN
- (M) MEASURED ON THIS SURVEY
- (A) BOOK 13 OF PARCEL MAPS, PAGE 65

**NOTES**

1. NOTE THAT BEARINGS SHOWN ARE FOR ANGULAR CONTROL FROM LOCAL CONSTRUCTION SURVEY DATA.