

# CORNER RECORD

Agency Index CR-23-241  
Document Number \_\_\_\_\_  
County of SAN JOAQUIN, California

City of STOCKTON

Brief Legal Description INTERSECTION OF HOLMAN ROAD AND MCALLEN ROAD



C.M. WEBER  
GRANT

### CORNER TYPE

- Government Corner
- Meander
- Rancho
- Control
- Property
- Other

Date of Survey 5/2/2023

### COORDINATES (Optional)

N. \_\_\_\_\_ E. \_\_\_\_\_  
 Elevation \_\_\_\_\_  
 Units  Metric  U.S. Survey Foot  
 Horizontal Datum \_\_\_\_\_  
 Zone \_\_\_\_\_ Epoch Date \_\_\_\_\_  
 Vertical Datum \_\_\_\_\_

- Complies with Public Resources Code §§8801-8819
- Complies with Public Resources Code §§8890-8902

PLS Act Ref:  8765(d)  8771  8773  Other:

Corner/Monument:  Left as found  Established  Rebuilt  Pre-Construction  
 Found and tagged  Reestablished  Referenced  Post-Construction

Narrative of corner identified and monument as found, set, reset, replaced, or removed:

See sheet #2 for description (s):

FOUND ONE (1) 3/4" IRON PIPE TAGGED "LS 6953" IN MONUMENT WELL (R1); FOUND ONE (1) 3/4" IRON PIPE IN MONUMENT WELL, NO TAG (R1); SET FOUR (4) CONCRETE NAILS WITH BRASS TAG "LS 6953" AS WITNESS CORNERS, ALL AS SHOWN ON SHEET 2.

### SURVEYOR'S STATEMENT

This Corner Record was prepared by me or under my direction in conformance with the Professional Land Surveyors' Act on AUGUST 16, 2023

Signed [Signature] P.L.S. or R.C.E. No. 6953



### COUNTY SURVEYOR'S STATEMENT

This Corner Record was received October 5, 2023

and examined and filed October 10, 2023

Signed [Signature] P.L.S. or R.C.E. No. 8657

Title County Surveyor



County Surveyor's Comment \_\_\_\_\_  
\_\_\_\_\_  
\_\_\_\_\_

**LEGEND:**

- ⊗ SET CONCRETE NAIL WITH BRASS TAG "LS 6953".
- FOUND MONUMENT AS NOTED.
- M&P- MAPS AND PLATS
- S.J.C.R. SAN JOAQUIN COUNTY RECORDS
- (M) MEASURED DISTANCE. ALL DISTANCES ARE MEASURED UNLESS NOTED OTHERWISE.

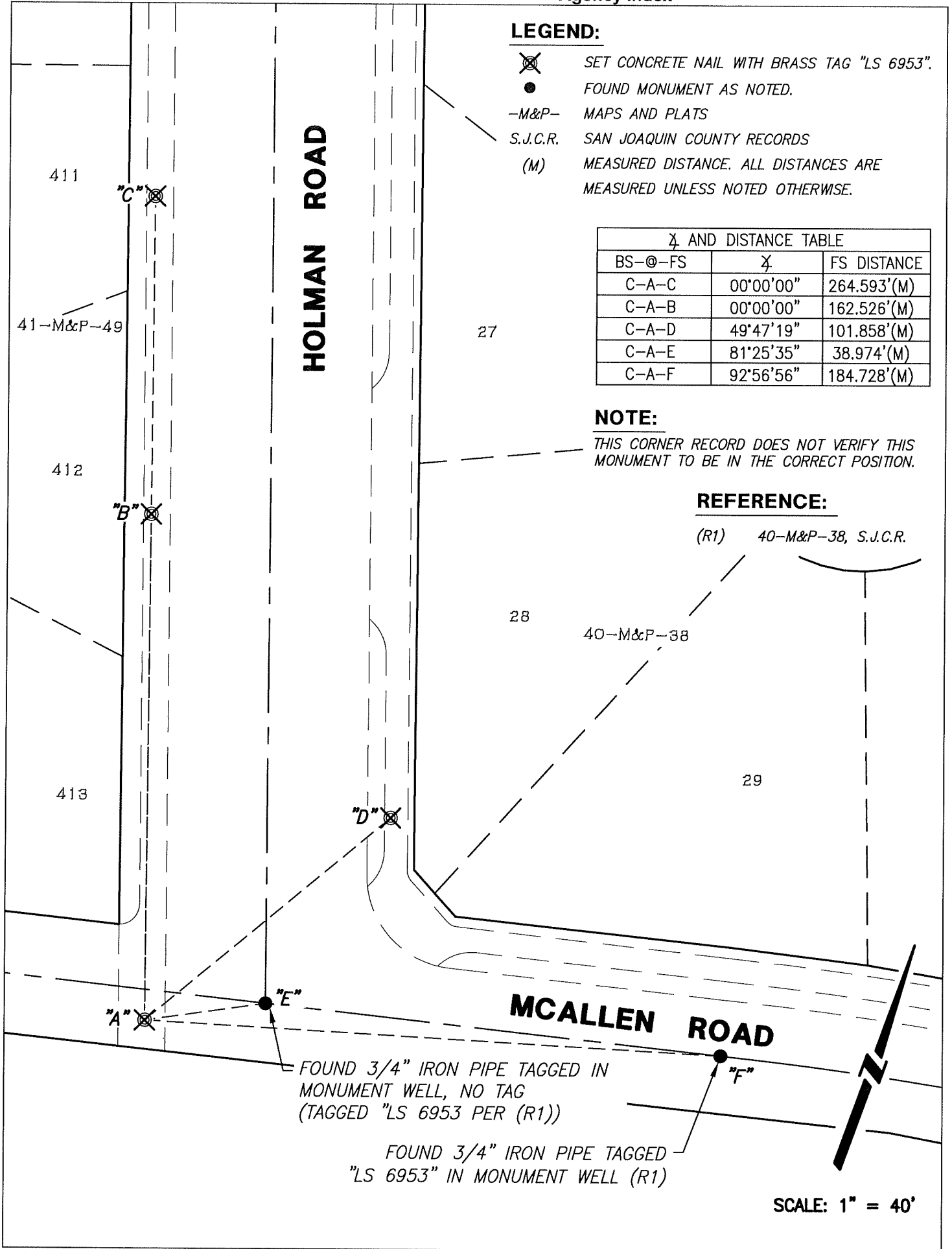
∠ AND DISTANCE TABLE		
BS-@-FS	∠	FS DISTANCE
C-A-C	00°00'00"	264.593'(M)
C-A-B	00°00'00"	162.526'(M)
C-A-D	49°47'19"	101.858'(M)
C-A-E	81°25'35"	38.974'(M)
C-A-F	92°56'56"	184.728'(M)

**NOTE:**

THIS CORNER RECORD DOES NOT VERIFY THIS MONUMENT TO BE IN THE CORRECT POSITION.

**REFERENCE:**

(R1) 40-M&P-38, S.J.C.R.



**HOLMAN ROAD**

**MCALLEN ROAD**

FOUND 3/4" IRON PIPE TAGGED IN MONUMENT WELL, NO TAG (TAGGED "LS 6953 PER (R1))

FOUND 3/4" IRON PIPE TAGGED "LS 6953" IN MONUMENT WELL (R1)

SCALE: 1" = 40'