

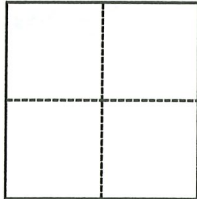
CORNER RECORD

Agency Index CR-23-236
Document Number _____

City of STOCKTON County of SAN JOAQUIN, California
Brief Legal Description SOUTHWEST CORNER OF LOT 9 PER MAPS & PLATS BOOK 11, PAGE 46

CORNER TYPE

COORDINATES (Optional)



- Government Corner
- Meander
- Rancho
- Control
- Property
- Other

N. _____ E. _____
 Elevation _____
 Units Metric U.S. Survey Foot
 Horizontal Datum _____
 Zone _____ Epoch Date _____
 Vertical Datum _____
 Complies with Public Resources Code §§8801-8819
 Complies with Public Resources Code §§8890-8902

Date of Survey September 11, 2023

- PLS Act Ref.: 8765(d) 8771 8773 Other: _____
- Corner/Monument: Left as found Established Rebuilt Pre-Construction
 Found and tagged Reestablished Referenced Post-Construction

Narrative of corner identified and monument as found, set, reset, replaced, or removed:

See sheet #2 for description(s):

PRE-CONSTRUCTION CORNER RECORD. THIS DOCUMENT IS FOR THE PURPOSE OF PRESERVING AND ESTABLISHING TIES TO EXISTING MONUMENT IN THE AREA OF NEW CONSTRUCTION OF IMPROVEMENTS, AS SHOWN ON BOOK 11 OF MAPS AND PLATS, PAGE 46, SAN JOAQUIN COUNTY RECORDS.

SURVEYOR'S STATEMENT

This Corner Record was prepared by me or under my direction in conformance with
 the Professional Land Surveyors' Act on September 28, 2023
 Signed [Signature] P.L.S. or R.C.E. No. L.S. 7600



COUNTY SURVEYOR'S STATEMENT

This Corner Record was received September 29, 2023
 and examined and filed October 5, 2023
 Signed James E. Hart P.L.S. or R.C.E. No. 8657
 Title County Surveyor



County Surveyor's Comment

NOTES:

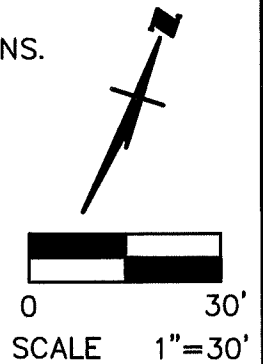
1. RETRACEMENT SURVEY WILL DETERMINE VALIDITY OF MONUMENT LOCATIONS.
2. ALL REFERENCES ARE SAN JOAQUIN COUNTY RECORDS.

LEGEND:

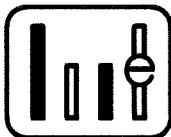
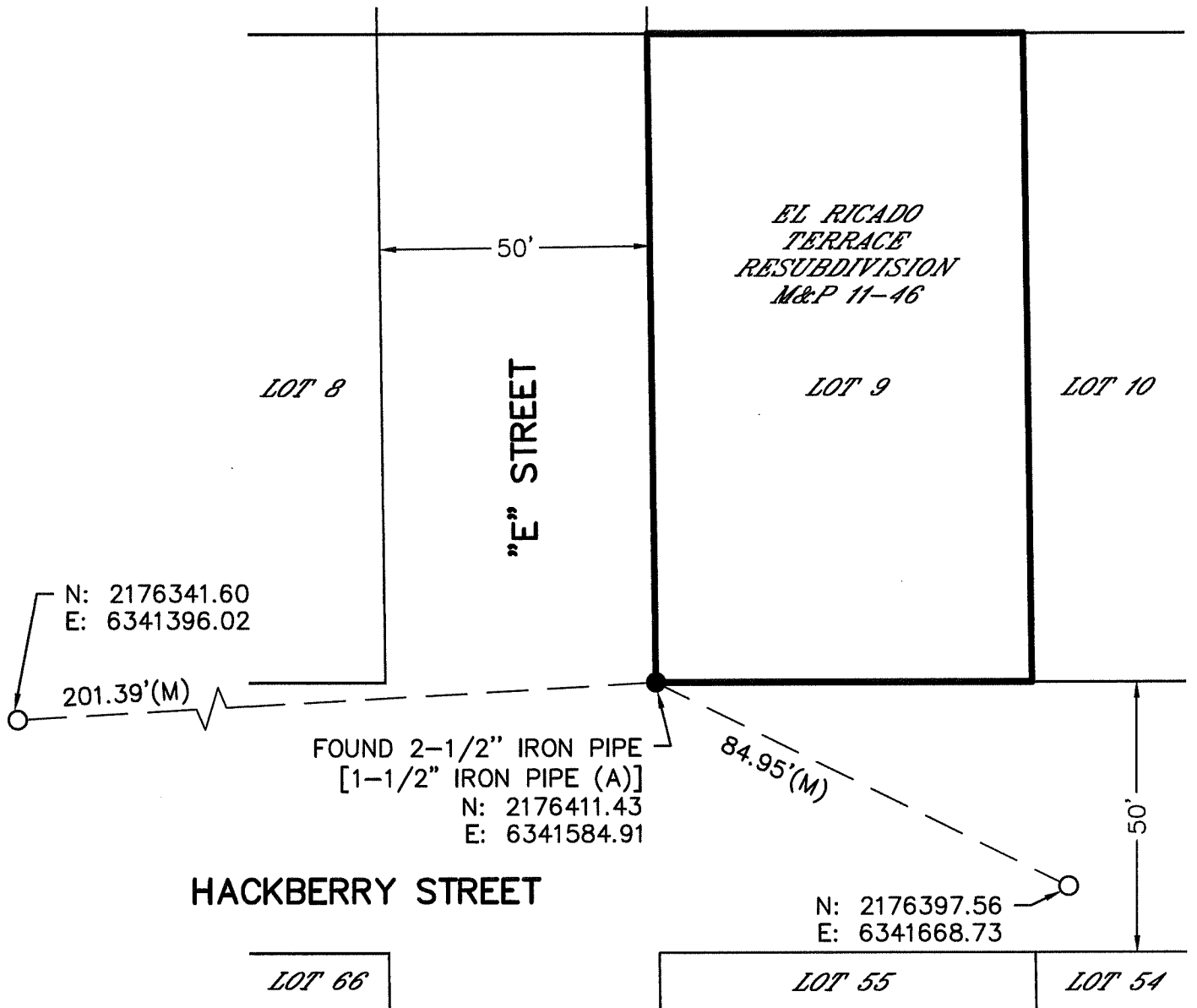
- (M) MEASURED
- M&P MAPS & PLATS, BOOK-PAGE
- FOUND MONUMENT AS NOTED
- SET MAG NAIL

REFERENCE:

(A) M&P 11-46



STOCKTON TERMINAL & EASTERN RAILROAD



WONG ENGINEERS, INC.
 PLANNING ENGINEERING SURVEYING
 4578 FEATHER RIVER DRIVE, SUITE A
 STOCKTON, CALIFORNIA 95219
 SEPTEMBER 28, 2023 PAGE 2 OF 2

DESCRIPTION:

THIS DOCUMENT IS FOR THE PURPOSE OF PRESERVING AND ESTABLISHING TIES TO EXISTING MONUMENT.