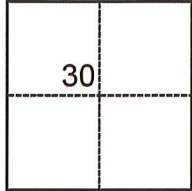


# CORNER RECORD

Agency Index CR-23-209  
 Document Number \_\_\_\_\_

City of \_\_\_\_\_ County of San Joaquin, California  
 Brief Legal Description Parcel 2, as shown on R.S. 23-18, S.J.C.R.

### CORNER TYPE



- Government Corner     Control  
 Meander                     Property  
 Rancho                          Other

Date of Survey July 3, 2023

### COORDINATES (Optional)

N. \_\_\_\_\_ E. \_\_\_\_\_

Elevation \_\_\_\_\_

Units  Metric  U.S. Survey Foot

Horizontal Datum \_\_\_\_\_

Zone \_\_\_\_\_ Epoch Date \_\_\_\_\_

Vertical Datum \_\_\_\_\_

Complies with Public Resources Code §§8801-8819

Complies with Public Resources Code §§8890-8902

T.3N., R.8E., M.D.B.&M.

PLS Act Ref.:  8765(d)     8771     8773     Other:

Corner/Monument:  Left as found     Established     Rebuilt     Pre-Construction  
 Found and tagged     Reestablished     Referenced     Post-Construction

Narrative of corner identified and monument as found, set, reset, replaced, or removed:

See sheet #2 for description(s):

### SURVEYOR'S STATEMENT

This Corner Record was prepared by me or under my direction in conformance with  
 the Professional Land Surveyors' Act on September 15, 2023  
 Signed Joe Murphy (P.L.S. or R.C.E. No. 7269)



### COUNTY SURVEYOR'S STATEMENT

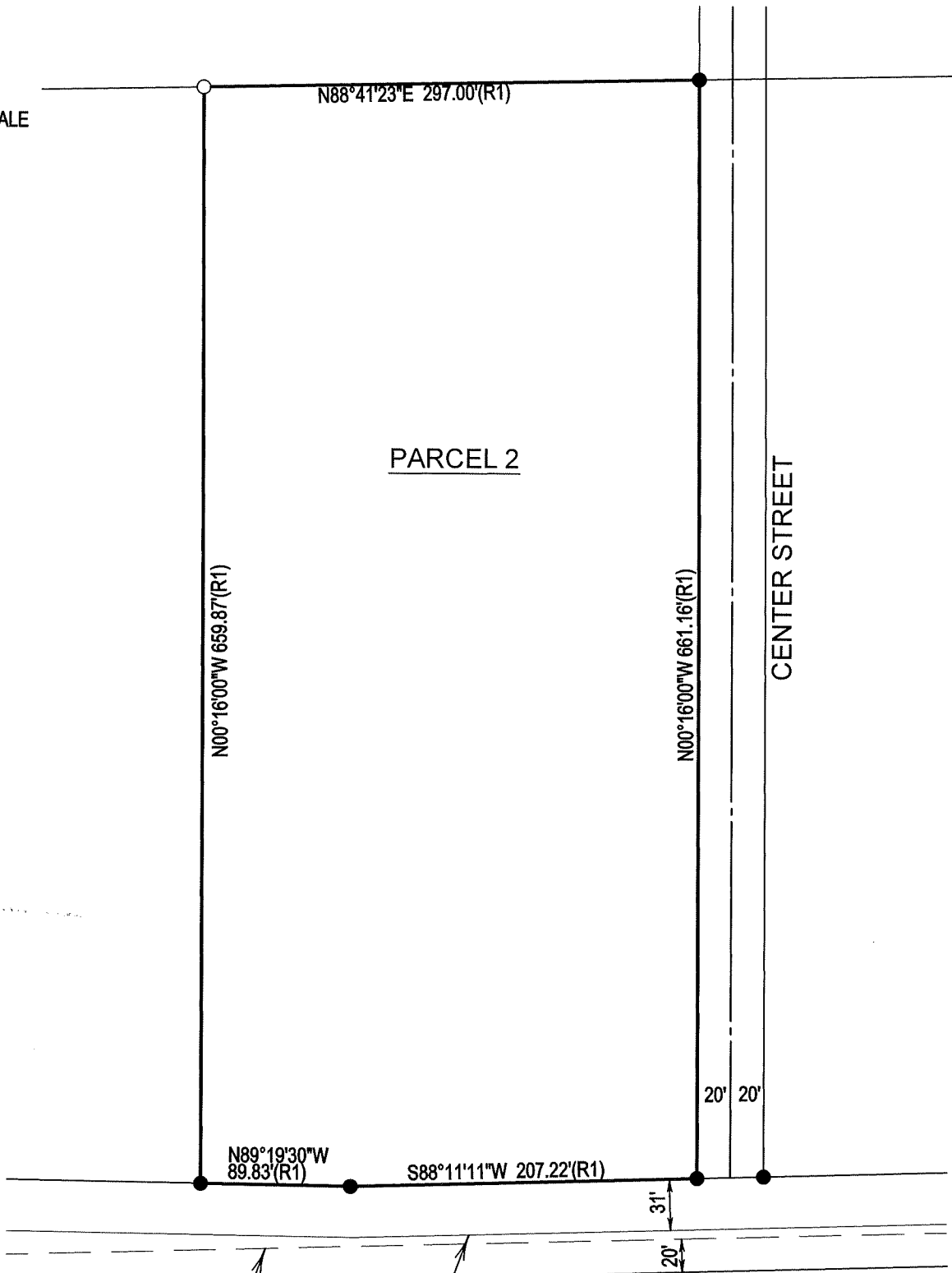
This Corner Record was received September 18, 2023  
 and examined and filed September 28, 2023  
 Signed James E. Hart P.L.S. or R.C.E. No. 8657  
 Title County Surveyor



County Surveyor's Comment



NOT TO SCALE



PARCEL 2

CENTER STREET

1/4 SECTION LINE

SOUTH LINE OF LOT 8.

LIVE OAK ROAD

LEGEND

- FD. FOUND
- I.R. IRON ROD
- S.J.C.R. SAN JOAQUIN COUNTY RECORDS
- R.S. RECORD OF SURVEY
- SET 3/4" x 30" I.R. W/ CAP "LS 7269"
- FOUND 3/4" IRON PIPE OR AS NOTED

REFERENCE

(R1) R.S. 23-18, S.J.C.R.