

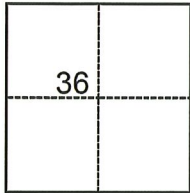
CORNER RECORD

Agency Index CR-23-208
Document Number _____

City of _____ County of San Joaquin, California
Brief Legal Description 2.23 Acre Parcel per R.S. 23-171, S.J.C.R.

CORNER TYPE

COORDINATES (Optional)



- Government Corner
- Meander
- Rancho
- Control
- Property
- Other

N. _____ E. _____

Elevation _____

Units Metric U.S. Survey Foot

Horizontal Datum _____

Zone _____ Epoch Date _____

Vertical Datum _____

Complies with Public Resources Code §§8801-8819

Complies with Public Resources Code §§8890-8902

T.4N., R.7E., M.D.B.&M.

PLS Act Ref.: 8765(d) 8771 8773 Other:

Corner/Monument: Left as found Established Rebuilt Pre-Construction
 Found and tagged Reestablished Referenced Post-Construction

Narrative of corner identified and monument as found, set, reset, replaced, or removed:

See sheet #2 for description(s):

SURVEYOR'S STATEMENT

This Corner Record was prepared by me or under my direction in conformance with
the Professional Land Surveyors' Act on September 15, 2023
Signed Joe Murphy (P.L.S. or R.C.E. No. 7269)

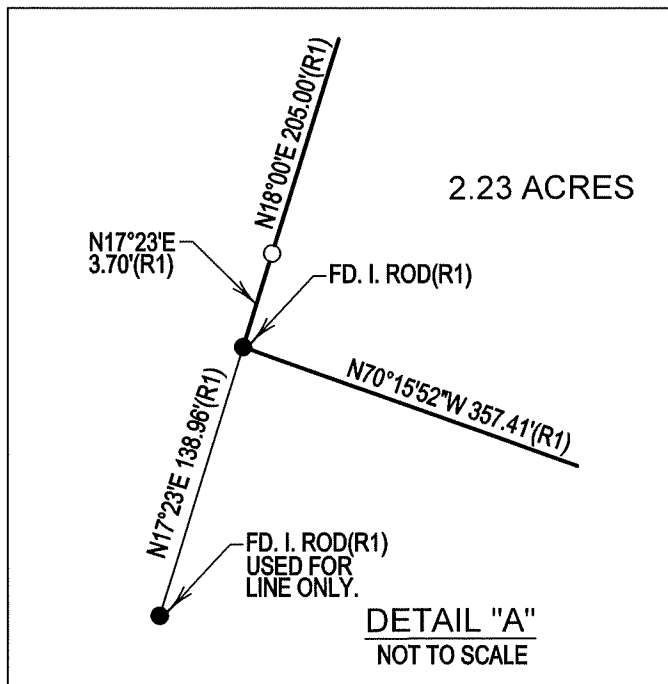
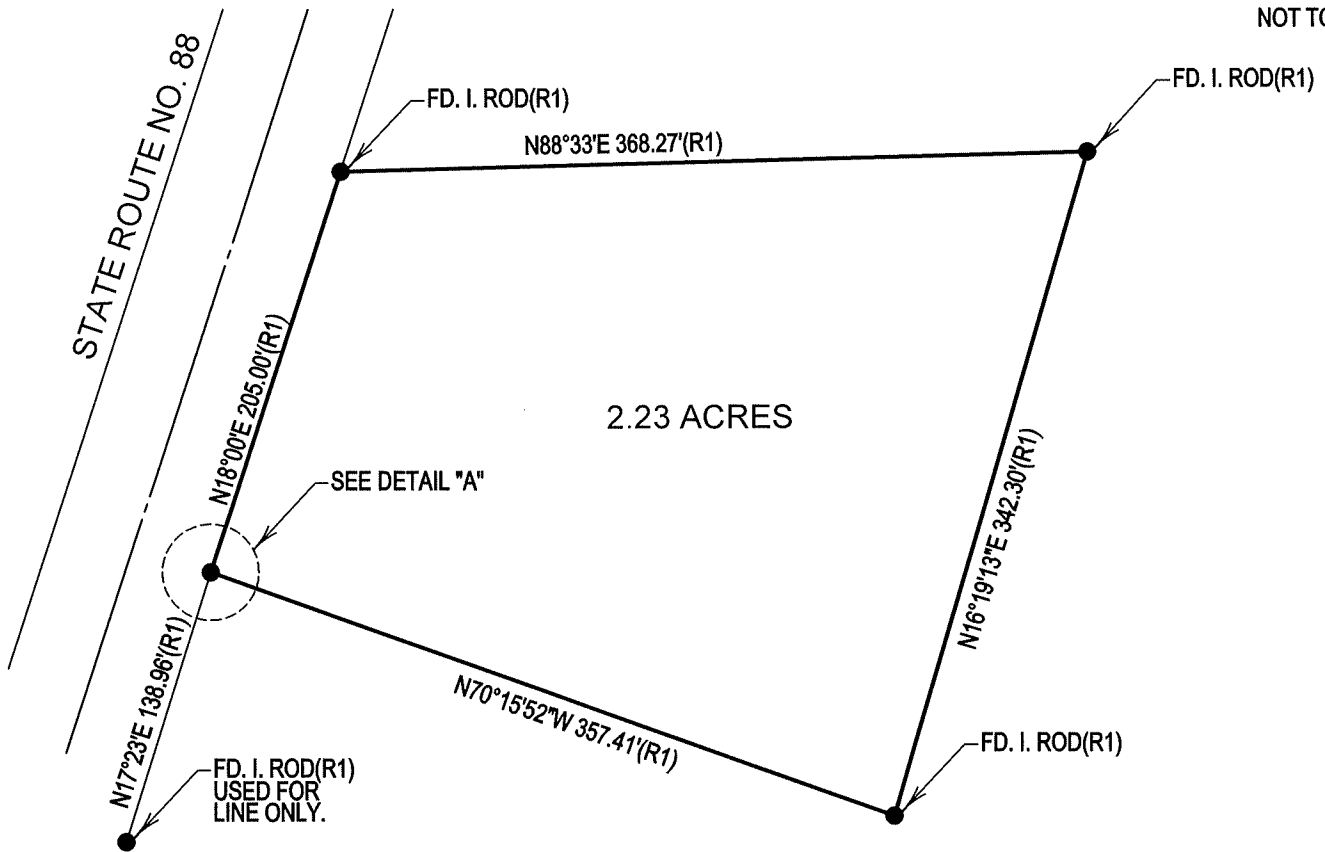
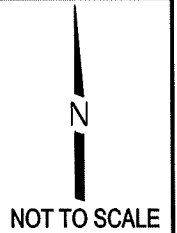


COUNTY SURVEYOR'S STATEMENT

This Corner Record was received September 18, 2023
and examined and filed September 28, 2023
Signed James E. Hart P.L.S. or R.C.E. No. 8657
Title County Surveyor



County Surveyor's Comment



REFERENCE

(R1) R.S. 23-171, S.J.C.R.

LEGEND

- FD. FOUND
- I.R. IRON ROD
- I. IRON
- S.J.C.R. SAN JOAQUIN COUNTY RECORDS
- R.S. RECORD OF SURVEY
- SET 3/4" x 30" I.R. WITH CAP "LS 7269"
- FOUND MONUMENT AS NOTED