

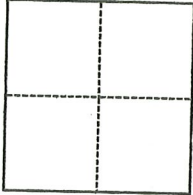
CORNER RECORD

Agency Index CR-23-206
Document Number _____

City of _____ County of SAN JOAQUIN, California
Brief Legal Description M.&P. 6-48

CORNER TYPE

COORDINATES (Optional)



- Government Corner
- Meander
- Rancho
- Control
- Property
- Other

N. _____ E. _____
 Elevation _____
 Units Metric U.S. Survey Foot
 Horizontal Datum _____
 Zone _____ Epoch Date _____
 Vertical Datum _____
 Complies with Public Resources Code §§8801-8819
 Complies with Public Resources Code §§8890-8902

Date of Survey August 21, 2023

- PLS Act Ref.: 8765(d) 8771 8773 Other:
- Corner/Monument: Left as found Established Rebuilt Pre-Construction
 Found and tagged Reestablished Referenced Post-Construction

Narrative of corner identified and monument as found, set, reset, replaced, or removed:
 See sheet #2 for description(s):

SEE SHEET 2 OF 2 FOR MONUMENTS FOUND.

SURVEYOR'S STATEMENT

This Corner Record was prepared by me or under my direction in conformance with
 the Professional Land Surveyors' Act on 9/5/2023
 Signed Walter John Shoup P.L.S. or R.C.E. No. L-7736

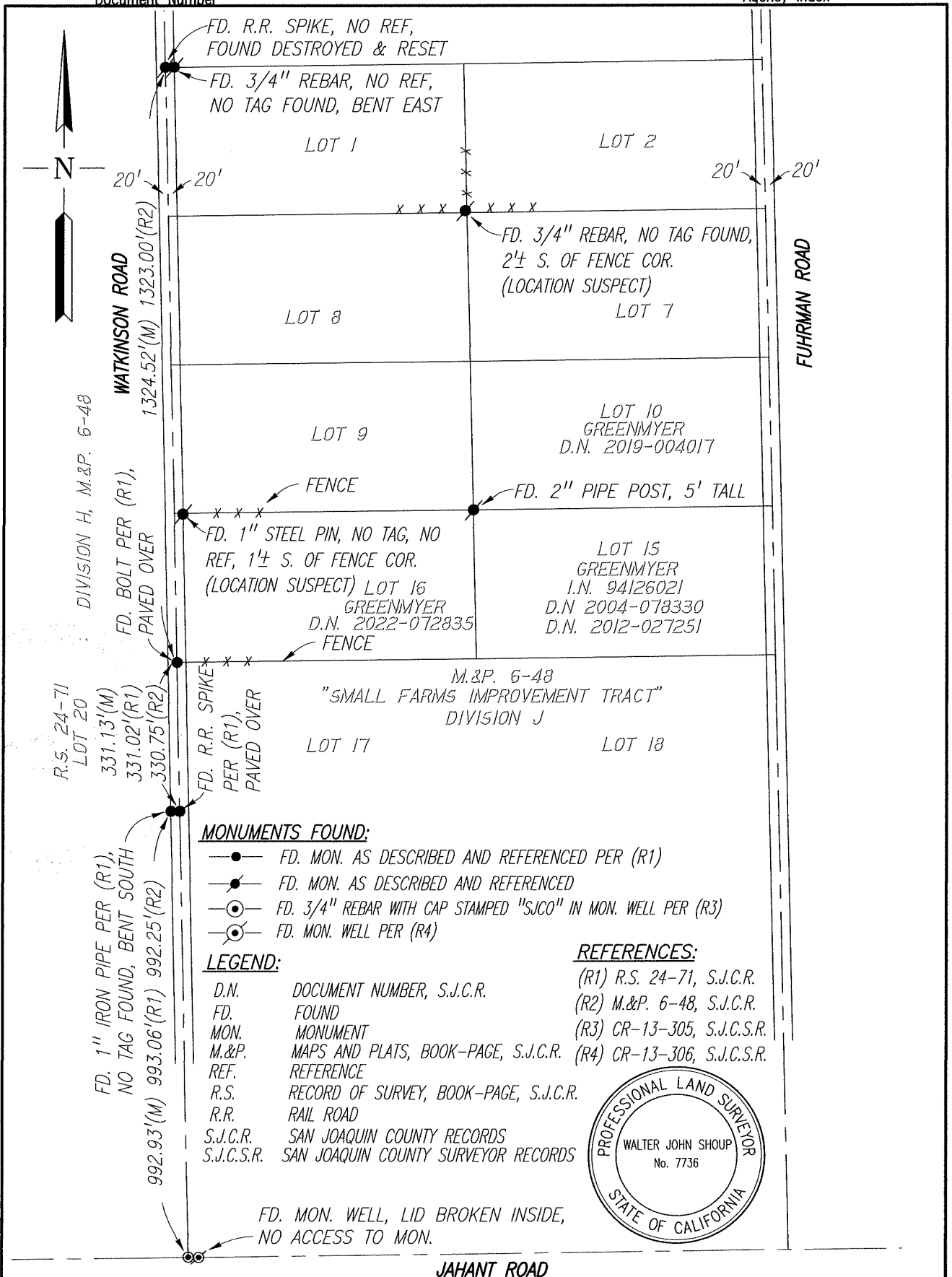


COUNTY SURVEYOR'S STATEMENT

This Corner Record was received September 6, 2023
 and examined and filed September 15, 2023
 Signed James E. Hart P.L.S. or R.C.E. No. 8657
 Title County Surveyor



County Surveyor's Comment



MONUMENTS FOUND:

- FD. MON. AS DESCRIBED AND REFERENCED PER (R1)
- FD. MON. AS DESCRIBED AND REFERENCED
- ⊙ FD. 3/4" REBAR WITH CAP STAMPED "SJCO" IN MON. WELL PER (R3)
- ⊙ FD. MON. WELL PER (R4)

LEGEND:

- D.N. DOCUMENT NUMBER, S.J.C.R.
- FD. FOUND
- MON. MONUMENT
- M.&P. MAPS AND PLATS, BOOK-PAGE, S.J.C.R.
- REF. REFERENCE
- R.S. RECORD OF SURVEY, BOOK-PAGE, S.J.C.R.
- R.R. RAIL ROAD
- S.J.C.R. SAN JOAQUIN COUNTY RECORDS
- S.J.C.S.R. SAN JOAQUIN COUNTY SURVEYOR RECORDS

REFERENCES:

- (R1) R.S. 24-71, S.J.C.R.
- (R2) M.&P. 6-48, S.J.C.R.
- (R3) CR-13-305, S.J.C.S.R.
- (R4) CR-13-306, S.J.C.S.R.

