

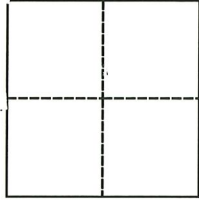
# CORNER RECORD

Agency Index CR-23-200

Document Number \_\_\_\_\_

City of Lodi County of San Joaquin, California

Brief Legal Description Parcel Six - Parcel Maps 12 - 24



### CORNER TYPE

Government Corner  Control   
Meander  Property   
Rancho  Other   
Date of Survey MAY 9<sup>TH</sup> 2023

### COORDINATES (Optional)

N. \_\_\_\_\_ E. \_\_\_\_\_  
Elevation \_\_\_\_\_  
Units Metric  U.S. Survey Foot   
Horizontal Datum \_\_\_\_\_  
Zone \_\_\_\_\_ Epoch Date \_\_\_\_\_  
Vertical Datum \_\_\_\_\_  
 Complies with Public Resources Code §§8801-8819  
 Complies with Public Resources Code §§8890-8902

PLS Act Ref.:  8765(d)  8771  8773  Other:  
Corner/Monument:  Left as found  Established  Rebuilt  Pre-Construction  
 Found and tagged  Reestablished  Referenced  Post-Construction

Narrative of corner identified and monument as found, set, reset, replaced, or removed:  
 See sheet #2 for description(s):

### SURVEYOR'S STATEMENT

This Corner Record was prepared by me or under my direction in conformance with  
the Professional Land Surveyors' Act on AUGUST 17<sup>TH</sup> 2023.  
Signed Brett Chappell P.L.S. [REDACTED] No. 7547

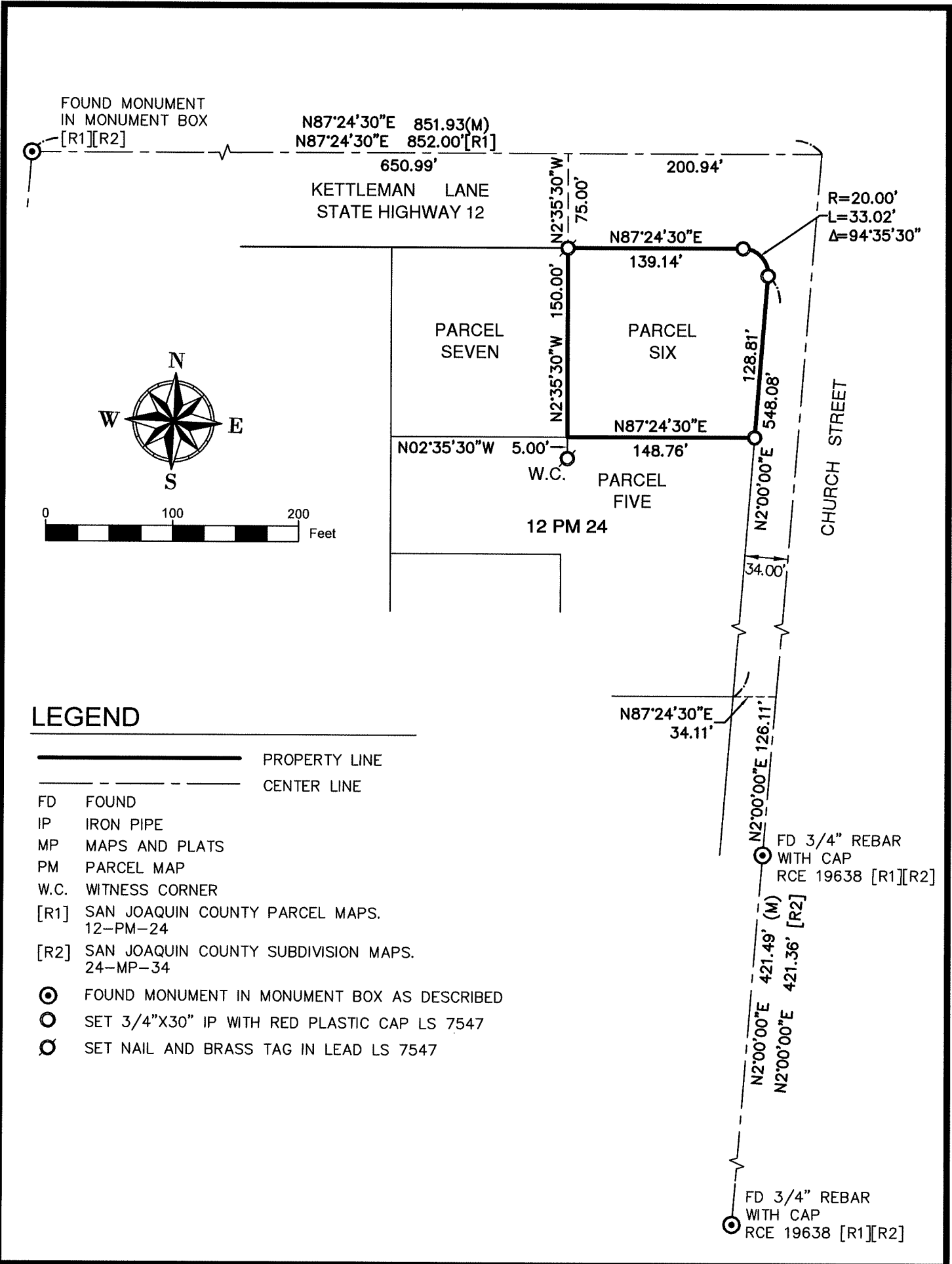


### COUNTY SURVEYOR'S STATEMENT

This Corner Record was received August 21, 2023  
and examined and filed August 28, 2023.  
Signed James E. Hart P.L.S. or R.C.E. No. 8657  
Title County Surveyor



County Surveyor's Comment



**LEGEND**

- PROPERTY LINE
- - - - - CENTER LINE
- FD FOUND
- IP IRON PIPE
- MP MAPS AND PLATS
- PM PARCEL MAP
- W.C. WITNESS CORNER
- [R1] SAN JOAQUIN COUNTY PARCEL MAPS.  
12-PM-24
- [R2] SAN JOAQUIN COUNTY SUBDIVISION MAPS.  
24-MP-34
- ⊙ FOUND MONUMENT IN MONUMENT BOX AS DESCRIBED
- SET 3/4"X30" IP WITH RED PLASTIC CAP LS 7547
- SET NAIL AND BRASS TAG IN LEAD LS 7547