

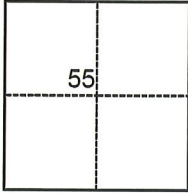
CORNER RECORD

Agency Index CR-23-199
 Document Number _____

City of _____ County of San Joaquin, California
 Brief Legal Description Lot 19, Block 6, Maps & Plats 6-4, San Joaquin County Records

CORNER TYPE

COORDINATES (Optional)



- Government Corner Control
 Meander Property
 Rancho Other

N. _____ E. _____

Elevation _____

Units Metric U.S. Survey Foot

Horizontal Datum _____

Zone _____ Epoch Date _____

Vertical Datum _____

Complies with Public Resources Code §§8801-8819

Complies with Public Resources Code §§8890-8902

Date of Survey July 7, 2023

C.M. WEBER GRANT

- PLS Act Ref.: 8765(d) 8771 8773 Other:
 Corner/
 Monument: Left as found Established Rebuilt Pre-Construction
 Found and tagged Reestablished Referenced Post-Construction

Narrative of corner identified and monument as found, set, reset, replaced, or removed:

See sheet #2 for description(s):

SURVEYOR'S STATEMENT

This Corner Record was prepared by me or under my direction in conformance with
 the Professional Land Surveyors' Act on August 17, 2023
 Signed Joe Murphy (P.L.S.) or R.C.E. No. 7269

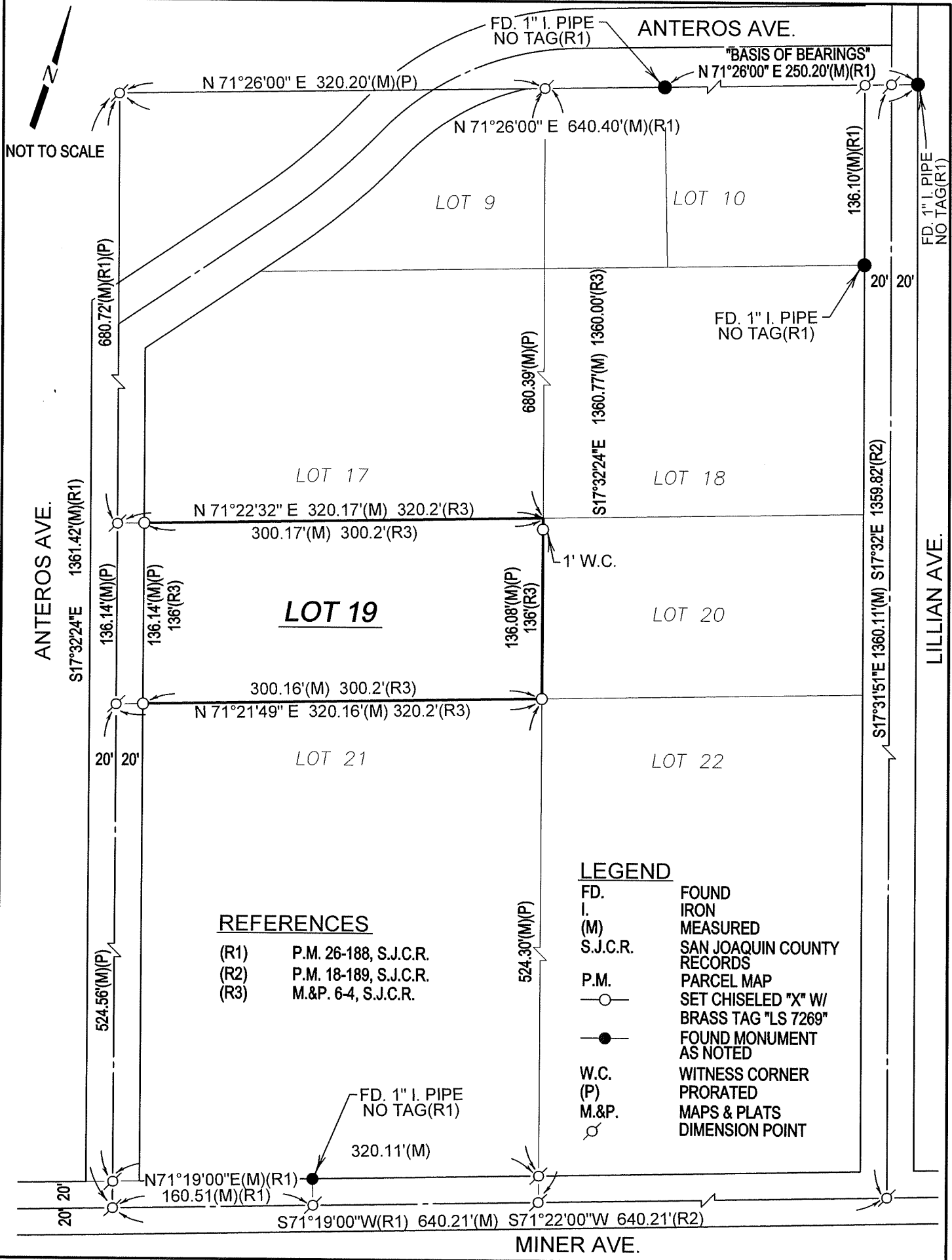


COUNTY SURVEYOR'S STATEMENT

This Corner Record was received August 21, 2023
 and examined and filed August 22, 2023
 Signed James E. Hart P.L.S. or R.C.E. No. 8657
 Title County Surveyor



County Surveyor's Comment



NOT TO SCALE

REFERENCES

- (R1) P.M. 26-188, S.J.C.R.
- (R2) P.M. 18-189, S.J.C.R.
- (R3) M.&P. 6-4, S.J.C.R.

LEGEND

- FD. FOUND
- I. IRON
- (M) MEASURED
- S.J.C.R. SAN JOAQUIN COUNTY RECORDS
- P.M. PARCEL MAP
- SET CHISELED "X" W/ BRASS TAG "LS 7269"
- FOUND MONUMENT AS NOTED
- W.C. WITNESS CORNER
- (P) PRORATED
- M.&P. MAPS & PLATS
- ⊙ DIMENSION POINT