

CORNER RECORD

Agency Index

CR-23-195

Document Number

City of STOCKTON

County of SAN JOAQUIN, California

Brief Legal Description LINE COMMON TO LOTS 541 AND 542 OF "UNIT 8 OF PARK WOODS",
BOOK 16 OF MAPS AND PLATS, PAGE 6, S.J.C.R.



T.2N., R.6E.

CORNER TYPE

- Government Corner
- Meander
- Rancho
- Control
- Property
- Other

Date of Survey 4/21/2023

COORDINATES (Optional)

N. _____ E. _____
 Elevation _____
 Units Metric U.S. Survey Foot
 Horizontal Datum _____
 Zone _____ Epoch Date _____
 Vertical Datum _____

- Complies with Public Resources Code §§8801-8819
- Complies with Public Resources Code §§8890-8902

- PLS Act Ref: 8765(d) 8771 8773 Other:
- Corner/Monument: Left as found Established Rebuilt Pre-Construction
 Found and tagged Reestablished Referenced Post-Construction

Narrative of corner identified and monument as found, set, reset, replaced, or removed:

See sheet #2 for description (s):

FOUND FOUR (4) CONCRETE NAILS WITH BRASS TAG "LS 6953" AS WITNESS CORNERS (R1); SET ONE (1) CONCRETE NAIL WITH BRASS TAG "LS 6953", ALL AS SHOWN ON SHEET 2.

SURVEYOR'S STATEMENT

This Corner Record was prepared by me or under my direction in conformance with the Professional Land Surveyors' Act on JUNE 22, 2023

Signed [Signature] P.L.S. or R.C.E. No. 6953



COUNTY SURVEYOR'S STATEMENT

This Corner Record was received August 10, 2023

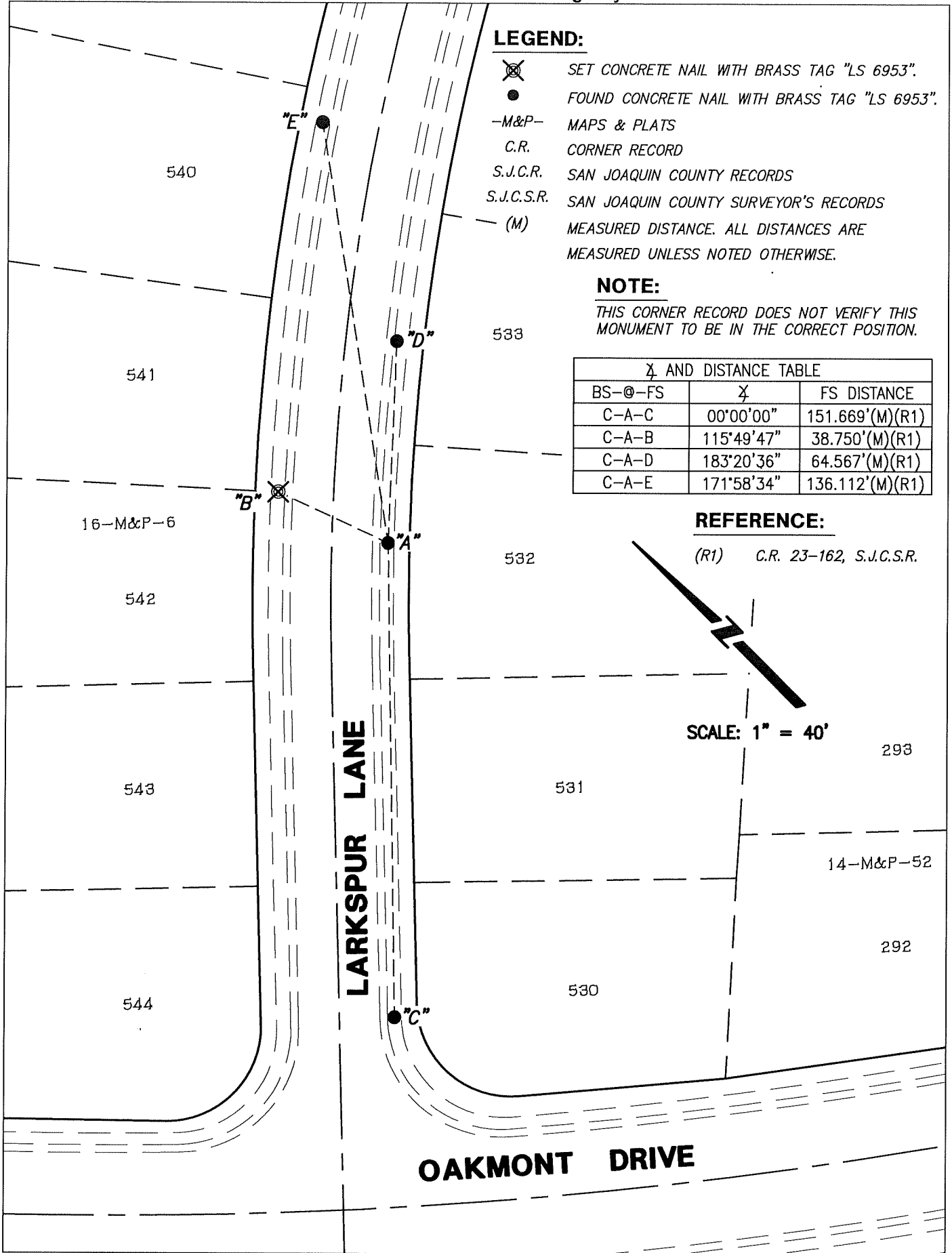
and examined and filed August 11, 2023

Signed James E. Hart P.L.S. or R.C.E. No. 8657

Title County Surveyor



County Surveyor's Comment _____



LEGEND:

- ⊗ SET CONCRETE NAIL WITH BRASS TAG "LS 6953".
- FOUND CONCRETE NAIL WITH BRASS TAG "LS 6953".
- M&P- MAPS & PLATS
- C.R. CORNER RECORD
- S.J.C.R. SAN JOAQUIN COUNTY RECORDS
- S.J.C.S.R. SAN JOAQUIN COUNTY SURVEYOR'S RECORDS
- (M) MEASURED DISTANCE. ALL DISTANCES ARE MEASURED UNLESS NOTED OTHERWISE.

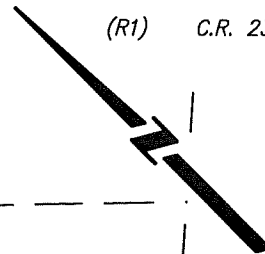
NOTE:

THIS CORNER RECORD DOES NOT VERIFY THIS MONUMENT TO BE IN THE CORRECT POSITION.

∠ AND DISTANCE TABLE		
BS-@-FS	∠	FS DISTANCE
C-A-C	00°00'00"	151.669'(M)(R1)
C-A-B	115°49'47"	38.750'(M)(R1)
C-A-D	183°20'36"	64.567'(M)(R1)
C-A-E	171°58'34"	136.112'(M)(R1)

REFERENCE:

(R1) C.R. 23-162, S.J.C.S.R.



SCALE: 1" = 40'