

# CORNER RECORD

Agency Index

CR-23-193

Document Number

City of STOCKTON

County of SAN JOAQUIN, California

Brief Legal Description LINE COMMON TO LOTS 128 AND 129 OF "QUAIL LAKES, UNIT NO. 4",  
BOOK 21 OF MAPS AND PLATS, PAGE 28, S.J.C.R.



T.2N., R.6E.

### CORNER TYPE

- Government Corner
- Meander
- Rancho
- Control
- Property
- Other

Date of Survey 4/21/2023

### COORDINATES (Optional)

N. \_\_\_\_\_ E. \_\_\_\_\_  
 Elevation \_\_\_\_\_  
 Units  Metric  U.S. Survey Foot  
 Horizontal Datum \_\_\_\_\_  
 Zone \_\_\_\_\_ Epoch Date \_\_\_\_\_  
 Vertical Datum \_\_\_\_\_

- Complies with Public Resources Code §§8801-8819
- Complies with Public Resources Code §§8890-8902

- PLS Act Ref:  8765(d)  8771  8773  Other:
- Corner/Monument:  Left as found  Established  Rebuilt  Pre-Construction  
 Found and tagged  Reestablished  Referenced  Post-Construction

Narrative of corner identified and monument as found, set, reset, replaced, or removed:

See sheet #2 for description (s):

FOUND ONE (1) 3/4" IRON PIN IN MONUMENT WELL (R1); FOUND THREE (3) CONCRETE NAILS WITH BRASS TAG "LS 6953" AS WITNESS CORNERS (R1); SET ONE (1) CONCRETE NAIL WITH BRASS TAG "LS 6953", ALL AS SHOWN ON SHEET 2.

### SURVEYOR'S STATEMENT

This Corner Record was prepared by me or under my direction in conformance with the Professional Land Surveyors' Act on JUNE 22, 2023

Signed [Signature] P.L.S. or R.C.E. No. 6953



### COUNTY SURVEYOR'S STATEMENT

This Corner Record was received August 10, 2023

and examined and filed August 11, 2023

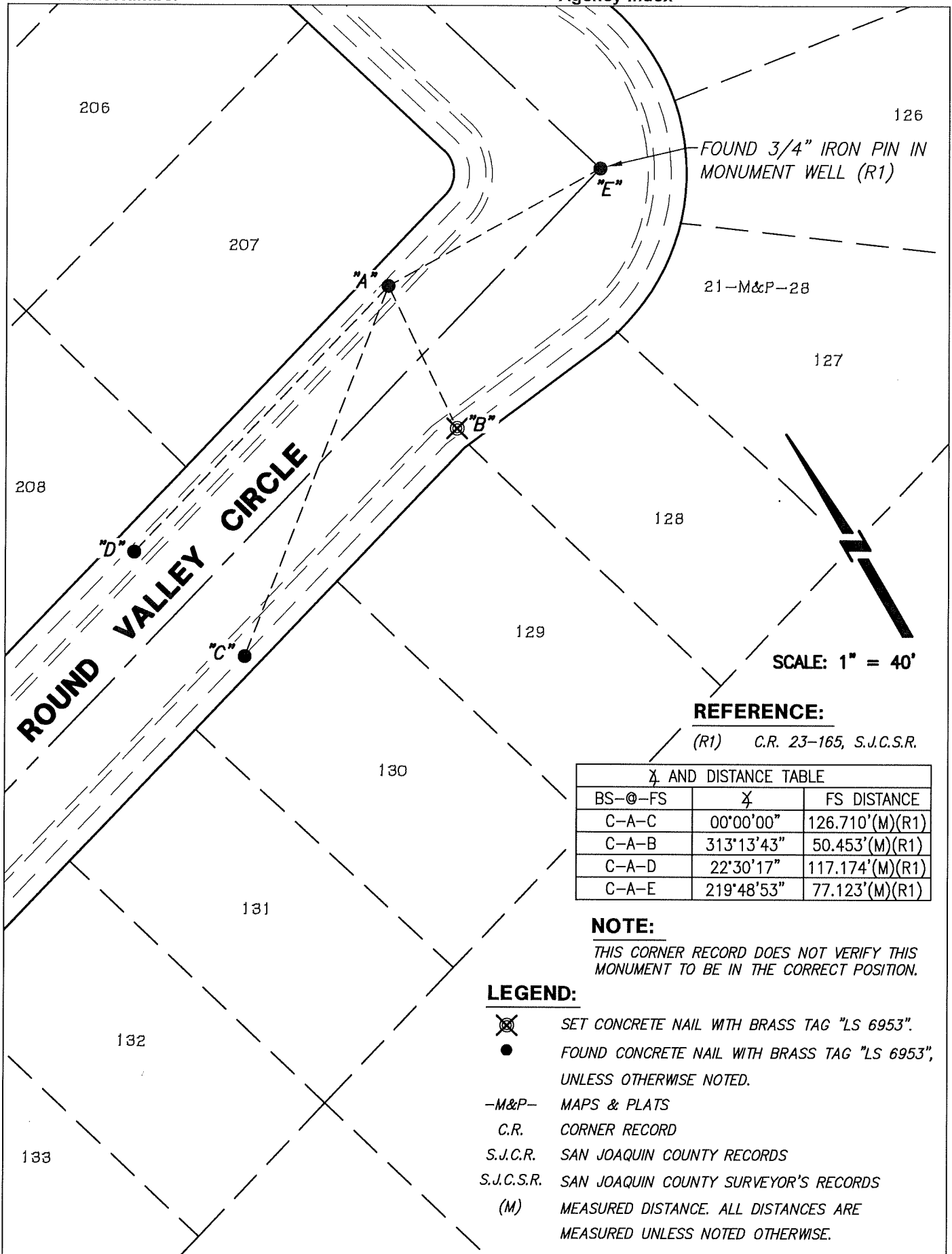
Signed James E. Hart P.L.S. or R.C.E. No. 8657

Title County Surveyor



County Surveyor's Comment \_\_\_\_\_

\_\_\_\_\_  
 \_\_\_\_\_



FOUND 3/4" IRON PIN IN MONUMENT WELL (R1)

ROUND VALLEY CIRCLE

SCALE: 1" = 40'

**REFERENCE:**

(R1) C.R. 23-165, S.J.C.S.R.

Bearing and Distance Table		
BS-@-FS	Bearing	FS Distance
C-A-C	00°00'00"	126.710'(M)(R1)
C-A-B	313°13'43"	50.453'(M)(R1)
C-A-D	22°30'17"	117.174'(M)(R1)
C-A-E	219°48'53"	77.123'(M)(R1)

**NOTE:**

THIS CORNER RECORD DOES NOT VERIFY THIS MONUMENT TO BE IN THE CORRECT POSITION.

**LEGEND:**

- SET CONCRETE NAIL WITH BRASS TAG "LS 6953".
- FOUND CONCRETE NAIL WITH BRASS TAG "LS 6953", UNLESS OTHERWISE NOTED.
- M&P- MAPS & PLATS
- C.R. CORNER RECORD
- S.J.C.R. SAN JOAQUIN COUNTY RECORDS
- S.J.C.S.R. SAN JOAQUIN COUNTY SURVEYOR'S RECORDS
- (M) MEASURED DISTANCE. ALL DISTANCES ARE MEASURED UNLESS NOTED OTHERWISE.