

CORNER RECORD

Agency Index

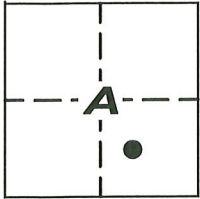
CR-23-189

Document Number

City of STOCKTON

County of SAN JOAQUIN, California

Brief Legal Description LOT 159 OF "VENETIAN GARDENS, UNIT NO. 2", BOOK 21 OF MAPS & PLATS,
PAGE 75, S.J.C.R.



C.M. WEBER
GRANT

CORNER TYPE

- Government Corner
- Meander
- Rancho
- Control
- Property
- Other

Date of Survey 4/21/2023

COORDINATES (Optional)

N. _____ E. _____
 Elevation _____
 Units Metric U.S. Survey Foot
 Horizontal Datum _____
 Zone _____ Epoch Date _____
 Vertical Datum _____

- Complies with Public Resources Code §§8801-8819
- Complies with Public Resources Code §§8890-8902

- PLS Act Ref: 8765(d) 8771 8773 Other:
- Corner/Monument: Left as found Established Rebuilt Pre-Construction
 Found and tagged Reestablished Referenced Post-Construction

Narrative of corner identified and monument as found, set, reset, replaced, or removed:

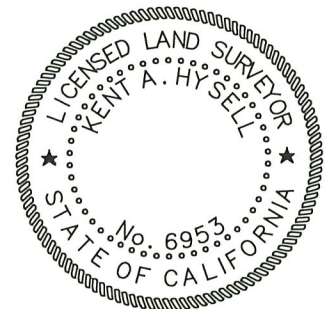
See sheet #2 for description (s):

FOUND THREE (3) CUT "+" IN WALK AT THE APPARENT OFFSET OF PROPERTY CORNERS (R1); FOUND THREE (3) 3/4" IRON PINS IN MONUMENT WELL (R1); FOUND TWO (2) CONCRETE NAILS WITH BRASS TAG "LS 6953" AS WITNESS CORNERS (R1), ALL AS SHOWN ON SHEET 2.

SURVEYOR'S STATEMENT

This Corner Record was prepared by me or under my direction in conformance with the Professional Land Surveyors' Act on AUGUST 7, 2023

Signed [Signature] P.L.S. or R.C.E. No. 6953



COUNTY SURVEYOR'S STATEMENT

This Corner Record was received August 10, 2023

and examined and filed August 11, 2023

Signed James E. Hart P.L.S. or R.C.E. No. 8657

Title County Surveyor



County Surveyor's Comment _____

185

LEGEND:

- FOUND CONCRETE NAIL WITH BRASS TAG "LS 6953", UNLESS OTHERWISE NOTED.
- M&P- MAPS & PLATS
- C.R. CORNER RECORD
- S.J.C.R. SAN JOAQUIN COUNTY RECORDS
- S.J.C.S.R. SAN JOAQUIN COUNTY SURVEYOR'S RECORDS
- 184 (M) MEASURED DISTANCE. ALL DISTANCES ARE MEASURED UNLESS NOTED OTHERWISE.

NOTE:

THIS CORNER RECORD DOES NOT VERIFY THIS MONUMENT TO BE IN THE CORRECT POSITION.

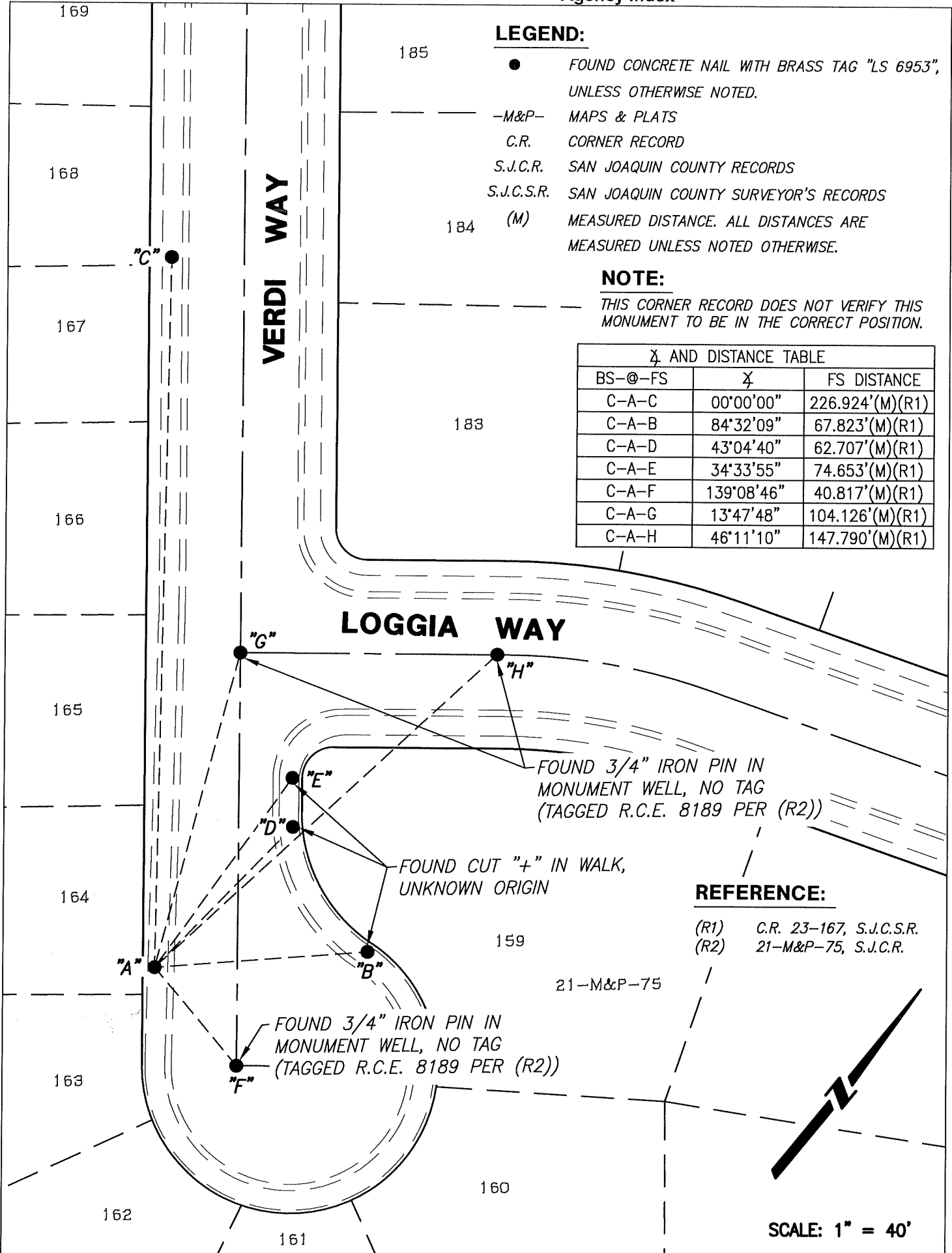
Δ AND DISTANCE TABLE

| BS-@-FS | Δ | FS DISTANCE |
|---------|------------|-----------------|
| C-A-C | 00°00'00" | 226.924'(M)(R1) |
| C-A-B | 84°32'09" | 67.823'(M)(R1) |
| C-A-D | 43°04'40" | 62.707'(M)(R1) |
| C-A-E | 34°33'55" | 74.653'(M)(R1) |
| C-A-F | 139°08'46" | 40.817'(M)(R1) |
| C-A-G | 13°47'48" | 104.126'(M)(R1) |
| C-A-H | 46°11'10" | 147.790'(M)(R1) |

183

VERDI WAY

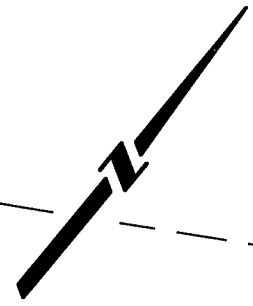
LOGGIA WAY



REFERENCE:

- (R1) C.R. 23-167, S.J.C.S.R.
- (R2) 21-M&P-75, S.J.C.R.

21-M&P-75



SCALE: 1" = 40'