

CORNER RECORD

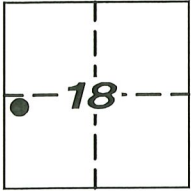
Agency Index CR-23-188

Document Number _____

City of STOCKTON

County of SAN JOAQUIN, California

Brief Legal Description LINE COMMON TO LOTS 28 AND 30 OF BLOCK 2 OF "SUPPLEMENT TO MAP OF WESTERLY-EXTENSION OF NORTH STOCKTON", BOOK 3 OF MAPS & PLATS, PAGE 7, S.J.C.R.



C.M. WEBER
GRANT

CORNER TYPE

- Government Corner
- Meander
- Rancho
- Control
- Property
- Other

Date of Survey 4/21/2023

COORDINATES (Optional)

N. _____ E. _____
 Elevation _____
 Units Metric U.S. Survey Foot
 Horizontal Datum _____
 Zone _____ Epoch Date _____
 Vertical Datum _____

- Complies with Public Resources Code §§8801-8819
- Complies with Public Resources Code §§8890-8902

PLS Act Ref: 8765(d) 8771 8773 Other:

Corner/Monument: Left as found Established Rebuilt Pre-Construction
 Found and tagged Reestablished Referenced Post-Construction

Narrative of corner identified and monument as found, set, reset, replaced, or removed:

See sheet #2 for description (s):

FOUND FOUR (4) CONCRETE NAILS WITH BRASS TAG "LS 6953" AS WITNESS CORNERS (R1); SET ONE (1) CONCRETE NAIL WITH BRASS TAG "LS 6953", ALL AS SHOWN ON SHEET 2.

SURVEYOR'S STATEMENT

This Corner Record was prepared by me or under my direction in conformance with the Professional Land Surveyors' Act on JUNE 22, 2023

Signed [Signature] P.L.S. or R.C.E. No. 6953



COUNTY SURVEYOR'S STATEMENT

This Corner Record was received August 10, 2023
and examined and filed August 11, 2023

Signed James E Hart P.L.S. or R.C.E. No. 8657

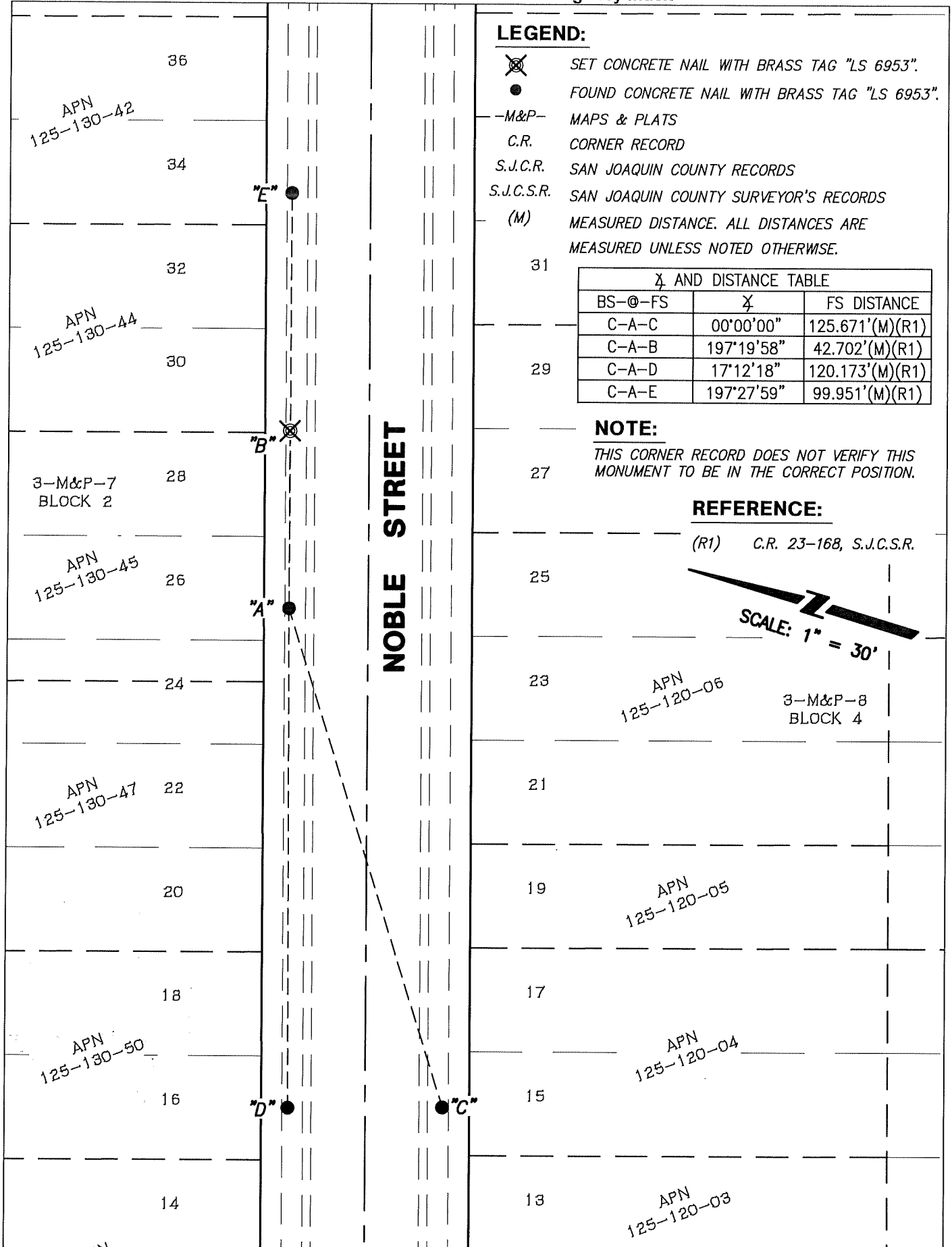
Title County Surveyor



County Surveyor's Comment _____

Document Number

Agency Index



LEGEND:

- ⊗ SET CONCRETE NAIL WITH BRASS TAG "LS 6953".
- FOUND CONCRETE NAIL WITH BRASS TAG "LS 6953".
- M&P- MAPS & PLATS
- C.R. CORNER RECORD
- S.J.C.R. SAN JOAQUIN COUNTY RECORDS
- S.J.C.S.R. SAN JOAQUIN COUNTY SURVEYOR'S RECORDS
- (M) MEASURED DISTANCE. ALL DISTANCES ARE MEASURED UNLESS NOTED OTHERWISE.

31

Δ AND DISTANCE TABLE		
BS-@-FS	Δ	FS DISTANCE
C-A-C	00°00'00"	125.671'(M)(R1)
C-A-B	197°19'58"	42.702'(M)(R1)
C-A-D	17°12'18"	120.173'(M)(R1)
C-A-E	197°27'59"	99.951'(M)(R1)

NOTE:

THIS CORNER RECORD DOES NOT VERIFY THIS MONUMENT TO BE IN THE CORRECT POSITION.

REFERENCE:

(R1) C.R. 23-168, S.J.C.S.R.

