

CORNER RECORD

Agency Index CR-23-185

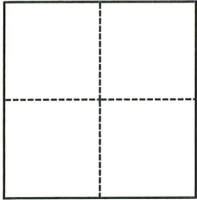
Document Number _____

City of TRACY County of SAN JOAQUIN, California

Brief Legal Description VALPICO ROAD EAST OF CORRAL HOLLOW ROAD

CORNER TYPE

COORDINATES (Optional)



- Government Corner
- Meander
- Rancho
- Control
- Property
- Other

Date of Survey March 21, 2019

N. _____ E. _____

Elevation _____

Units Metric U.S. Survey Foot

Horizontal Datum _____

Zone _____ Epoch Date _____

Vertical Datum _____

Complies with Public Resources Code §§8801-8819

Complies with Public Resources Code §§8890-8902

PLS Act Ref.: 8765(d) 8771 8773 Other:

Corner/Monument: Left as found Established Rebuilt Pre-Construction

Found and tagged Reestablished Referenced Post-Construction

Narrative of corner identified and monument as found, set, reset, replaced, or removed:

See sheet #2 for description(s):

LOCATED CORNERS ALONG NORTH SIDE OF VALPICO ROAD EAST OF CORRAL HOLLOW ROAD PRIOR TO CONSTRUCTION. SEE SHEET 2 FOR DESCRIPTIONS

SURVEYOR'S STATEMENT

This Corner Record was prepared by me or under my direction in conformance with

the Professional Land Surveyors' Act on 24 July 2023

Signed [Signature] P.L.S. or R.C.E. No. 8164



COUNTY SURVEYOR'S STATEMENT

This Corner Record was received July 27, 2023

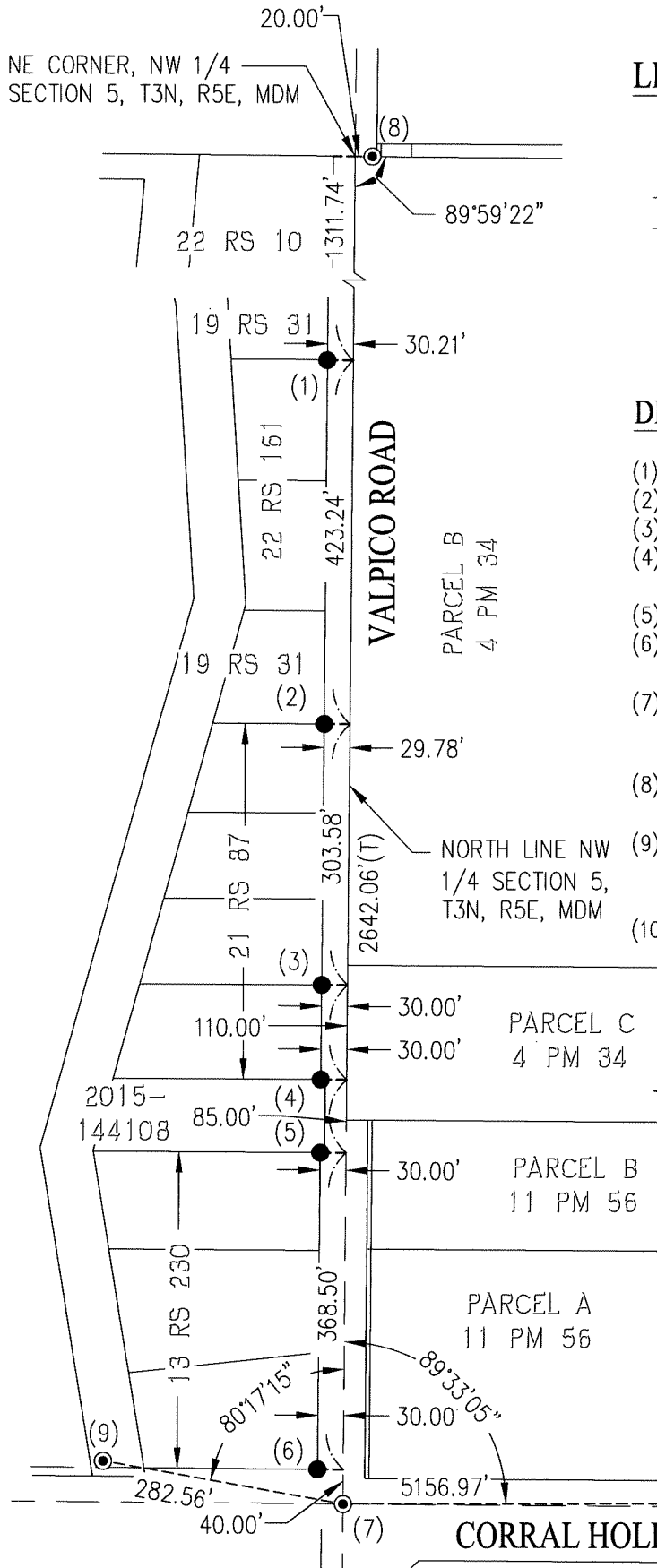
and examined and filed July 31, 2023

Signed James E Hart P.L.S. or R.C.E. No. 8657

Title County Surveyor

County Surveyor's Comment



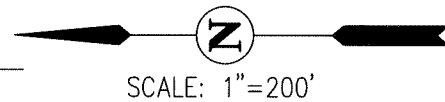


LEGEND

- ⊙ FOUND BRASS DISK, AS NOTED
- FOUND MONUMENT, AS NOTED
- SECTION LINE
- - - TIE LINE
- PM PARCEL MAP
- RS RECORD OF SURVEY
- CR CORNER RECORD
- M&P MAPS AND PLATS

DESCRIPTIONS

- (1) FOUND 1/2" REBAR, NO CAP (19 RS 31)
- (2) FOUND 3/4" IRON PIN, NO CAP (19 RS 31)
- (3) FOUND 3/4" IRON PIPE, OPEN (21 RS 87)
- (4) FOUND 3/4" IRON PIPE, OPEN, BENT (21 RS 87)
- (5) FOUND 5/8" REBAR, NO CAP (13 RS 230)
- (6) FOUND 5/8" REBAR, NO CAP, BENT (13 RS 230)
- (7) FOUND BRASS DISK, RCE 9338, IN WELL AT NORTHWEST CORNER OF SECTION 5, T3S, R5E, MDM (CR 17-363)
- (8) FOUND 2.5" BRASS DISK IN MONUMENT WELL, RCE 23720 (32 M&P 38)
- (9) FOUND CITY OF TRACY GPS-9: 2" ALUMINUM DISK ON HEADWALL STAMPED "GPS-9" (36 RS 118)
- (10) FOUND CITY OF TRACY GPS-2079: 2" BRASS DISK ON CURB STAMPED "CITY OF TRACY GPS 2079 RESET, LS 8164" (CR 20-002)



NOTE

THE INTENT IS TO ESTABLISH REFERENCE TIES TO FOUND MONUMENTS, NOT TO SPECIFY HOW THOSE MONUMENTS RELATE TO PROPERTY LINES. MAP REFERENCES ARE GEOGRAPHIC REFERENCES ONLY.