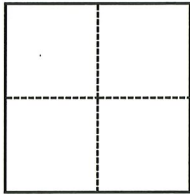


# CORNER RECORD

Agency Index CR-23-183  
Document Number \_\_\_\_\_

City of Lodi County of San Joaquin, California  
Brief Legal Description Lower Sacramento Road & Harney Lane in Section 15, T3N., R6E., M.D.B. & M.



### CORNER TYPE

- Government Corner
- Meander
- Rancho
- Control
- Property
- Other

Date of Survey June 2, 2023

### COORDINATES (Optional)

N. \_\_\_\_\_ E. \_\_\_\_\_  
 Elevation \_\_\_\_\_  
 Units  Metric  U.S. Survey Foot  
 Horizontal Datum \_\_\_\_\_  
 Zone \_\_\_\_\_ Epoch Date \_\_\_\_\_  
 Vertical Datum \_\_\_\_\_  
 Complies with Public Resources Code §§8801-8819  
 Complies with Public Resources Code §§8890-8902

PLS Act Ref.:  8765(d)  8771  8773  Other:  
 Corner/Monument:  Left as found  Established  Rebuilt  Pre-Construction  
 Found and tagged  Reestablished  Referenced  Post-Construction

Narrative of corner identified and monument as found, set, reset, replaced, or removed:  
 See sheet #2 for description(s):



### SURVEYOR'S STATEMENT

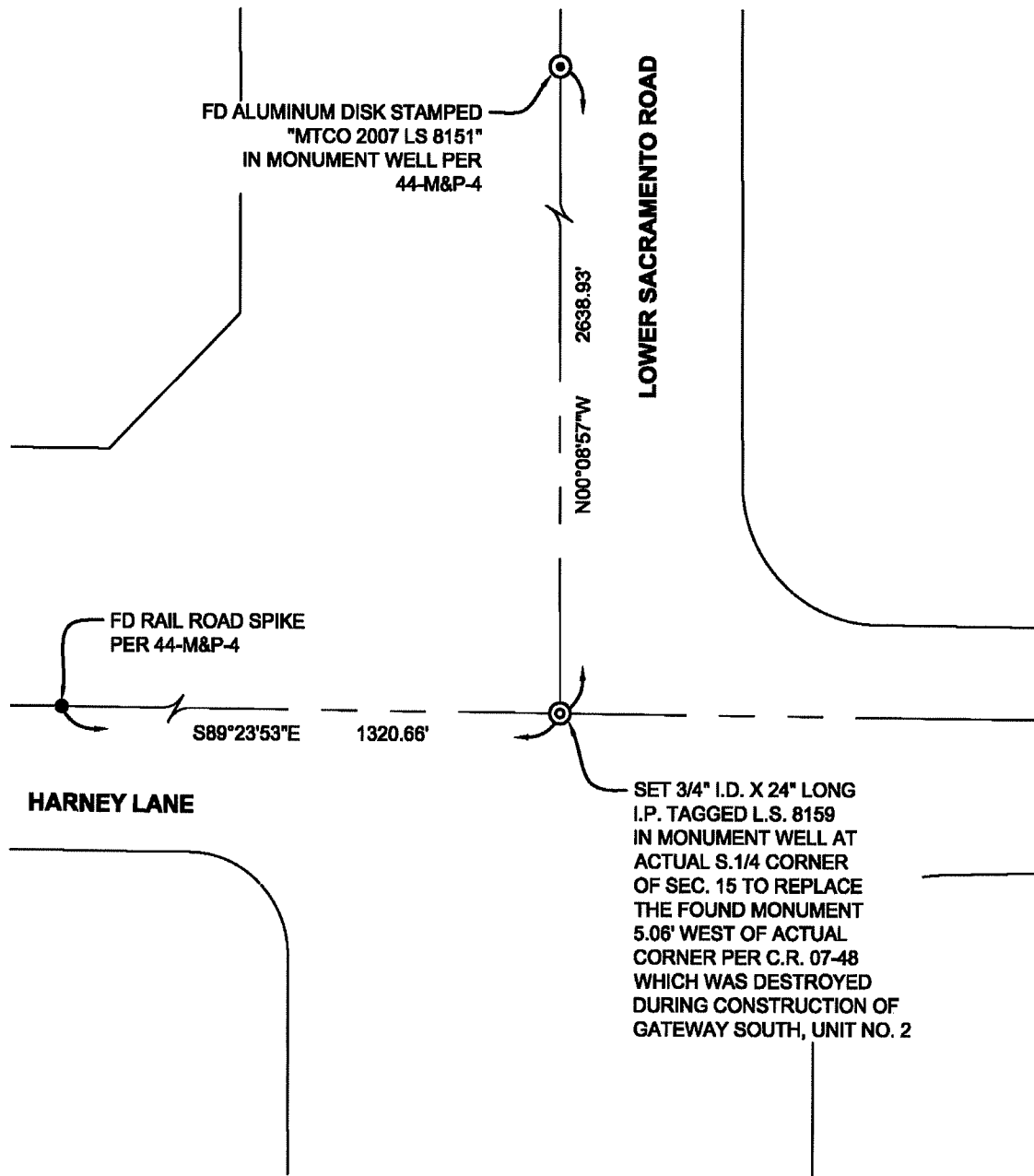
This Corner Record was prepared by me or under my direction in conformance with the Professional Land Surveyors' Act on July 11, 2023.  
Signed Douglas F. Banks P.L.S. or R.C.E. No. 8159

### COUNTY SURVEYOR'S STATEMENT

This Corner Record was received July 24, 2023  
and examined and filed July 31, 2023.  
Signed James E. Hart P.L.S. or R.C.E. No. 8657  
Title County Surveyor



County Surveyor's Comment



LEGEND:

- FD FOUND
- I.D. INSIDE DIAMETER
- I.P. IRON PIPE
- M&P- MAPS AND PLATS, BOOK, PAGE, S.J.C.R.
- S.J.C.R. SAN JOAQUIN COUNTY RECORDS
- C.R. CORNER RECORD, SAN JOAQUIN COUNTY SURVEYOR'S RECORDS



NOT TO SCALE