

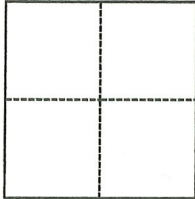
CORNER RECORD

Agency Index CR-23-178
Document Number _____

City of _____ County of SAN JOAQUIN COUNTY, California
Brief Legal Description EAST LINE OF PARCELS 1 & 2 AS SHOWN ON PM 1-34.

CORNER TYPE

COORDINATES (Optional)



- Government Corner
- Meander
- Rancho
- Control
- Property
- Other

Date of Survey June 13, 2023

N. _____ E. _____
 Elevation _____
 Units Metric U.S. Survey Foot
 Horizontal Datum _____
 Zone _____ Epoch Date _____
 Vertical Datum _____
 Complies with Public Resources Code §§8801-8819
 Complies with Public Resources Code §§8890-8902

PLS Act Ref.: 8765(d) 8771 8773 Other:
 Corner/Monument: Left as found Established Rebuilt Pre-Construction
 Found and tagged Reestablished Referenced Post-Construction

Narrative of corner identified and monument as found, set, reset, replaced, or removed:
 See sheet #2 for description(s):

CORNER RECORD TO REESTABLISH PROPERTY CORNERS WHICH WERE OBLITERATED.

SURVEYOR'S STATEMENT

This Corner Record was prepared by me or under my direction in conformance with
 the Professional Land Surveyors' Act on July 7, 2023
 Signed [Signature] P.L.S. or R.C.E. No. LS 7600



COUNTY SURVEYOR'S STATEMENT

This Corner Record was received July 12, 2023
 and examined and filed July 17, 2023
 Signed James E. Hart P.L.S. or R.C.E. No. 8657
 Title County Surveyor



County Surveyor's Comment

DESCRIPTION:

THIS DOCUMENT IS FOR THE PURPOSE OF RESETTING ANY MISSING OR OBLITERATED CORNERS AT THE EAST LINE OF PARCELS 1 & 2, AS SHOWN IN BOOK 1 OF PARCEL MAPS, PAGE 34, SAN JOAQUIN COUNTY RECORDS.

LEGEND:

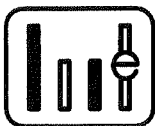
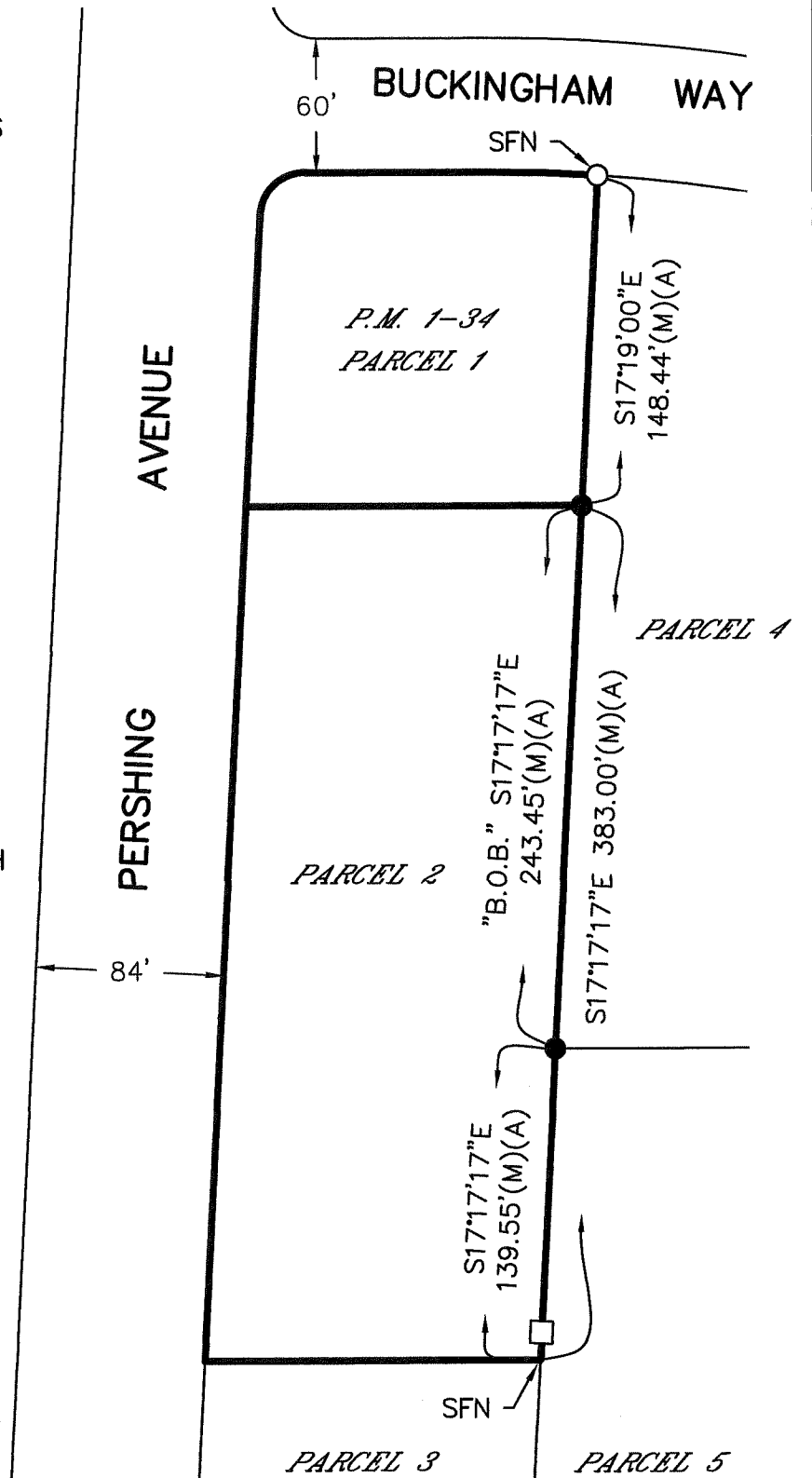
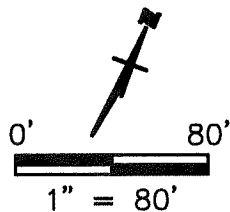
B.O.B. BASIS OF BEARINGS
 FD. FOUND
 I IRON
 P.M. PARCEL MAP, BOOK-PAGE
 SFN SEARCHED, FOUND NOTHING
 S.J.C.R. SAN JOAQUIN COUNTY RECORDS

- FD. 3/4" I. PIN (A). NO TAG.
- SET 3/4" X 30" I. PIN TAGGED L.S. 7600
- SET CHISELED CROSS WITH BRASS TAG STAMPED L.S. 7600 N17°17'17"W 1.95' FROM PROPERTY CORNER.

REFERENCE:

(A) P.M. 1-34, S.J.C.R.

ALL REFERENCES ARE PER S.J.C.R.



WONG ENGINEERS, INC.
 4578 FEATHER RIVER DRIVE SUITE A
 STOCKTON, CA 95219 (209) 476-0011
 JULY 7, 2023 2 OF 2