

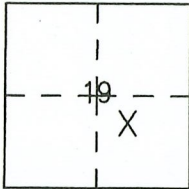
# CORNER RECORD

Agency Index CR-23-173  
 Document Number \_\_\_\_\_

City of Ripon County of San Joaquin, California  
 Brief Legal Description Lot 6, Block 17 Ripona, Volume 07 M&P Page 13, City of Ripon

### CORNER TYPE

### COORDINATES (Optional)



Township 2 South  
 Range 8 East, Mount  
 Diablo Meridian

Government Corner  Control   
 Meander  Property   
 Rancho  Other

N. \_\_\_\_\_ E. \_\_\_\_\_  
 Elevation. \_\_\_\_\_

Units Metric  U.S. Survey Foot

Horizontal Datum \_\_\_\_\_

Zone \_\_\_\_\_ Epoch Date \_\_\_\_\_

Date of Survey April 25, 2023

Vertical Datum \_\_\_\_\_

Complies with Public Resources Code §§8801-8819

Complies with Public Resources Code §§8890-8902

PLS Act Ref.:  8765(d)  8771  8773  Other:

Corner/  
 Monument:  Left as found  Established  Rebuilt  Pre-Construction

Found and tagged  Reestablished  Referenced  Post-Construction

Narrative of corner identified and monument as found, set, reset, replaced, or removed:

See sheet #2 for description(s):

Found many monuments and survey points as previously shown of Corner Record, Document Number 03-49 San Joaquin County Surveyors Records. Set 3/4" iron pipes tagged L.S. 5443 for Lot Corners of Lot 6. See accompanying plat on reverse side.

### SURVEYOR'S STATEMENT

This Corner Record was prepared by me or under my direction in conformance with

the Professional Land Surveyor's Act on April 25, 2023

Signed [Signature] P.L.S. or R.C.E. No. PLS 5443



### COUNTY SURVEYOR'S STATEMENT

This Corner Record was received June 22, 2023

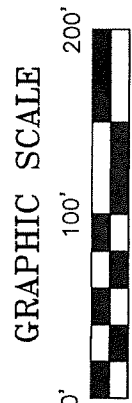
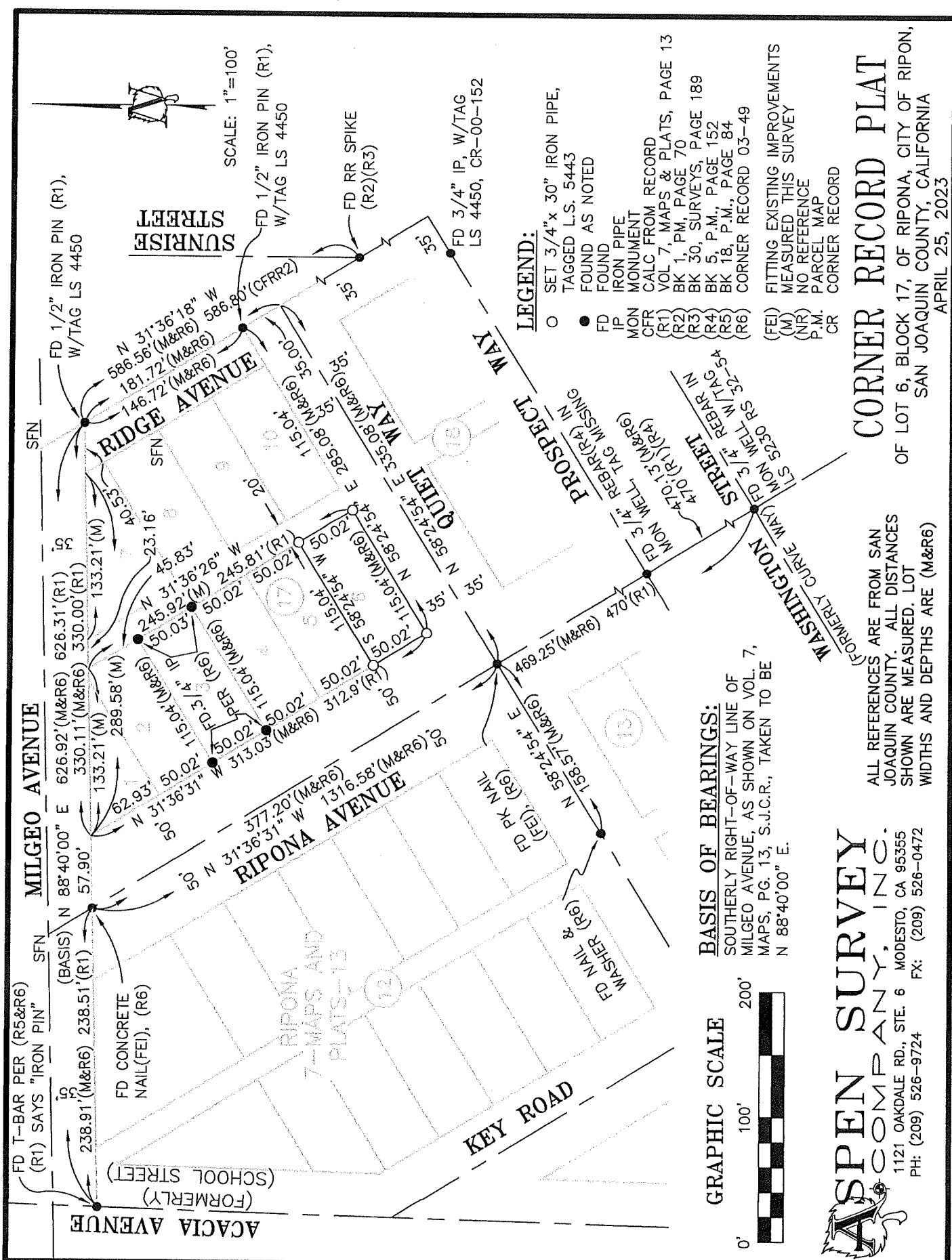
and examined and filed July 6, 2023

Signed James E Hart P.L.S. or R.C.E. No. 8657

Title County Surveyor

County Surveyor's Comment





**BASIS OF BEARINGS:**  
 SOUTHERLY RIGHT-OF-WAY LINE OF  
 MILGEGO AVENUE, AS SHOWN ON VOL. 7,  
 MAPS, PG. 13, S.J.C.R., TAKEN TO BE  
 N 88°40'00" E.

**LEGEND:**

- SET 3/4" x 30" IRON PIPE, TAGGED L.S. 5443
- FOUND AS NOTED
- FD FOUND
- IP IRON PIPE
- MON MONUMENT
- CFR CALC. FROM RECORD
- (R1) VOL 7, MAPS & PLATS, PAGE 13
- (R2) BK 1, PM, PAGE 70
- (R3) BK 30, SURVEYS, PAGE 189
- (R4) BK 5, P.M., PAGE 152
- (R5) BK 18, P.M., PAGE 84
- (R6) CORNER RECORD 03-49
- (FEI) FITTING EXISTING IMPROVEMENTS
- (M) MEASURED THIS SURVEY
- (NR) NO REFERENCE
- P.M. PARCEL MAP
- CR CORNER RECORD

**ASPEN SURVEY COMPANY, INC.**  
 1121 OAKDALE RD., STE. 6 MODESTO, CA 95355  
 PH: (209) 526-9724 FX: (209) 526-0472

ALL REFERENCES ARE FROM SAN JOAQUIN COUNTY. ALL DISTANCES SHOWN ARE MEASURED. LOT WIDTHS AND DEPTHS ARE (M&R6)

**CORNER RECORD PLAT**  
 OF LOT 6, BLOCK 17, OF RIPONA, CITY OF RIPON,  
 SAN JOAQUIN COUNTY, CALIFORNIA  
 APRIL 25, 2023