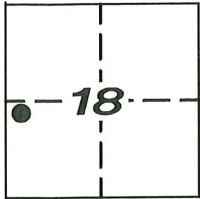


CORNER RECORD

Agency Index CR-23-168
Document Number _____
County of SAN JOAQUIN, California

City of STOCKTON

Brief Legal Description LINE COMMON TO LOTS 28 AND 30 OF BLOCK 2 OF "SUPPLEMENT TO MAP OF WESTERLY-EXTENSION OF NORTH STOCKTON", BOOK 3 OF MAPS & PLATS, PAGE 7, S.J.C.R.



C.M. WEBER
GRANT

CORNER TYPE

- Government Corner
- Meander
- Rancho
- Control
- Property
- Other

Date of Survey 10/27/2022

COORDINATES (Optional)

N. _____ E. _____
 Elevation _____
 Units Metric U.S. Survey Foot
 Horizontal Datum _____
 Zone _____ Epoch Date _____
 Vertical Datum _____

- Complies with Public Resources Code §§8801-8819
- Complies with Public Resources Code §§8890-8902

PLS Act Ref: 8765(d) 8771 8773 Other: _____

Corner/Monument: Left as found Established Rebuilt Pre-Construction
 Found and tagged Reestablished Referenced Post-Construction

Narrative of corner identified and monument as found, set, reset, replaced, or removed:
 See sheet #2 for description (s):

FOUND ONE (1) CUT "+" IN WALK AT APPARENT PROJECTION OF PROPERTY LINE COMMON TO LOTS 28 AND 30, UNKNOWN ORIGIN; SET FOUR (4) CONCRETE NAILS WITH BRASS TAG "LS 6953" AS WITNESS CORNERS, ALL AS SHOWN ON SHEET 2.

SURVEYOR'S STATEMENT

This Corner Record was prepared by me or under my direction in conformance with the Professional Land Surveyors' Act on MAY 30, 2023

Signed [Signature] P.L.S. or R.C.E. No. 6953



COUNTY SURVEYOR'S STATEMENT

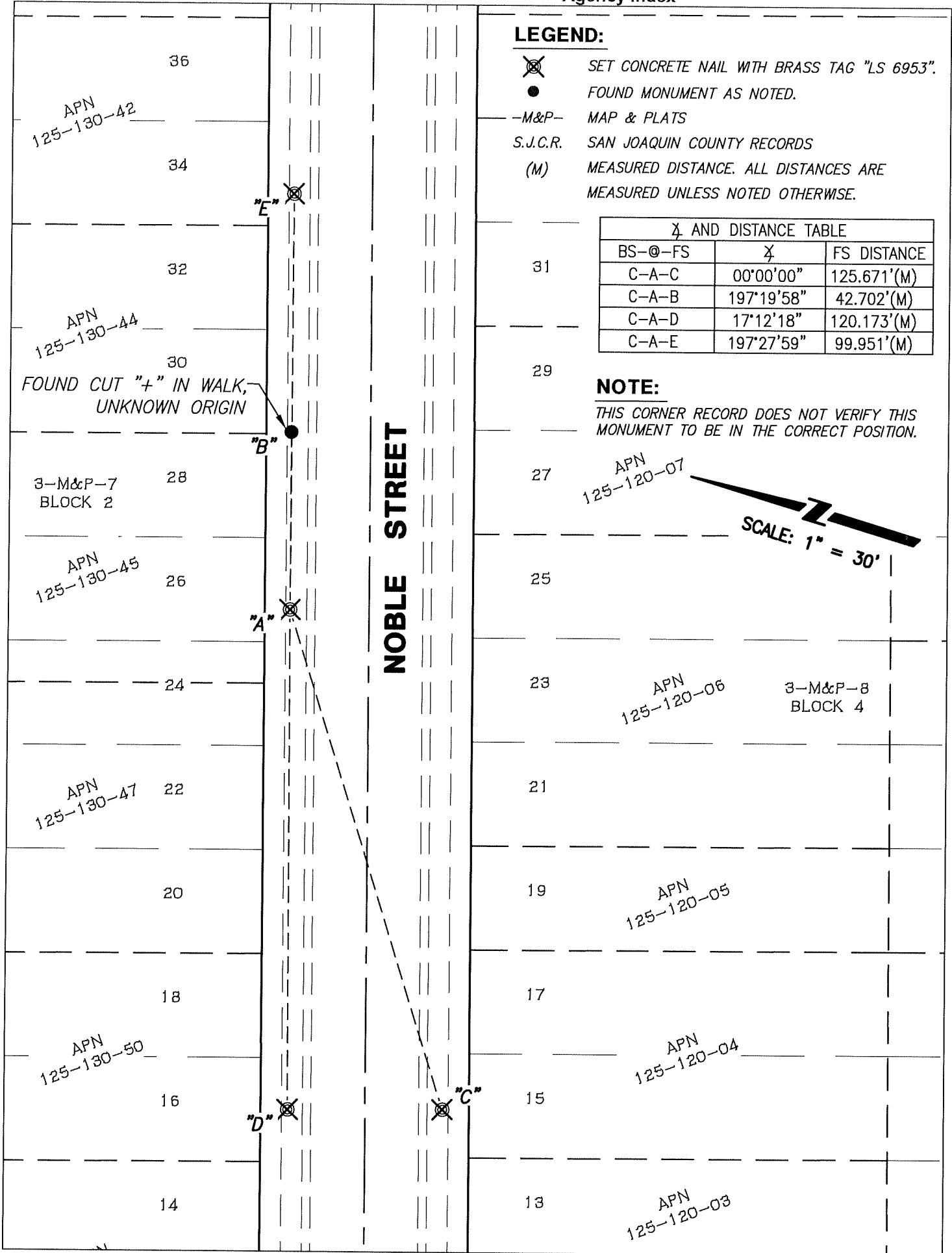
This Corner Record was received May 31, 2023
and examined and filed June 6, 2023

Signed James E. Hart P.L.S. or R.C.E. No. 8657




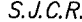

Title County Surveyor



County Surveyor's Comment _____



LEGEND:

-  SET CONCRETE NAIL WITH BRASS TAG "LS 6953".
-  FOUND MONUMENT AS NOTED.
-  -M&P- MAP & PLATS
-  S.J.C.R. SAN JOAQUIN COUNTY RECORDS
-  (M) MEASURED DISTANCE. ALL DISTANCES ARE MEASURED UNLESS NOTED OTHERWISE.

X AND DISTANCE TABLE		
BS-@-FS	X	FS DISTANCE
C-A-C	00°00'00"	125.671'(M)
C-A-B	197°19'58"	42.702'(M)
C-A-D	17°12'18"	120.173'(M)
C-A-E	197°27'59"	99.951'(M)

NOTE:

THIS CORNER RECORD DOES NOT VERIFY THIS MONUMENT TO BE IN THE CORRECT POSITION.

