

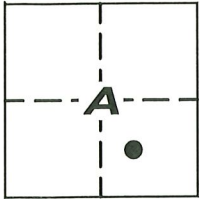
CORNER RECORD

Agency Index CR-23-167
Document Number _____

City of STOCKTON

County of SAN JOAQUIN, California

Brief Legal Description LOT 159 OF "VENETIAN GARDENS, UNIT NO. 2", BOOK 21 OF MAPS & PLATS, PAGE 75, S.J.C.R.



C.M. WEBER GRANT

CORNER TYPE

- Government Corner
- Meander
- Rancho
- Control
- Property
- Other

Date of Survey 11/01/2022

COORDINATES (Optional)

N. _____ E. _____
 Elevation _____
 Units Metric U.S. Survey Foot
 Horizontal Datum _____
 Zone _____ Epoch Date _____
 Vertical Datum _____

- Complies with Public Resources Code §§8801-8819
- Complies with Public Resources Code §§8890-8902

PLS Act Ref: 8765(d) 8771 8773 Other: _____

Corner/Monument: Left as found Established Rebuilt Pre-Construction
 Found and tagged Reestablished Referenced Post-Construction

Narrative of corner identified and monument as found, set, reset, replaced, or removed:
 See sheet #2 for description (s):

FOUND THREE (3) CUT "+" IN WALK AT THE APPARENT OFFSET OF PROPERTY CORNERS, UNKNOWN ORIGIN; FOUND THREE (3) 3/4" IRON PINS IN MONUMENT WELL, NO TAG (R1); SET TWO (2) CONCRETE NAILS WITH BRASS TAG "LS 6953" AS WITNESS CORNERS, ALL AS SHOWN ON SHEET 2.

SURVEYOR'S STATEMENT

This Corner Record was prepared by me or under my direction in conformance with the Professional Land Surveyors' Act on MAY 8, 2023

Signed [Signature] P.L.S. or R.C.E. No. 6953



COUNTY SURVEYOR'S STATEMENT

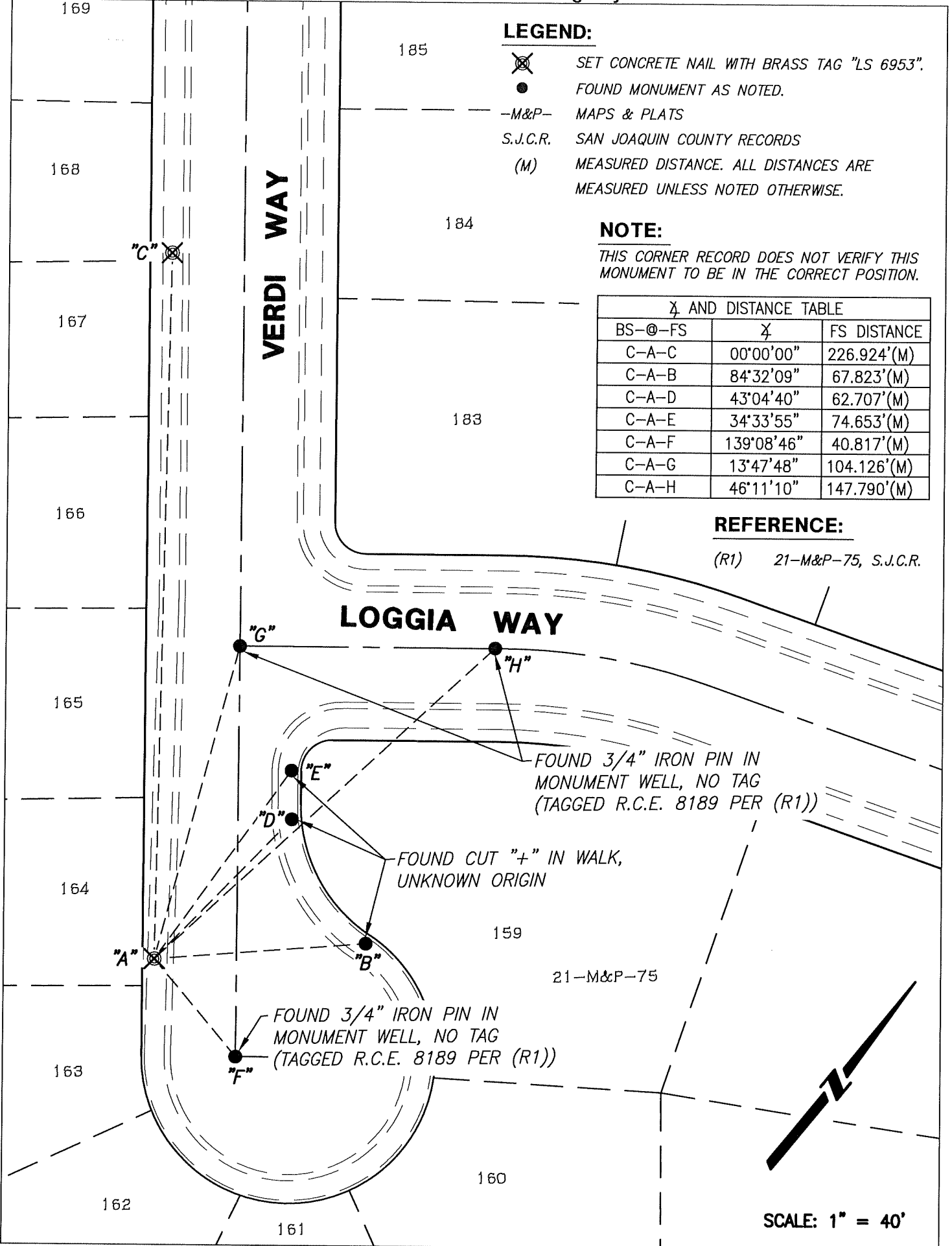
This Corner Record was received May 8, 2023 and examined and filed June 6, 2023

Signed James E. Hart P.L.S. or R.C.E. No. 8657

Title County Surveyor



County Surveyor's Comment _____



LEGEND:

- ⊗ SET CONCRETE NAIL WITH BRASS TAG "LS 6953".
- FOUND MONUMENT AS NOTED.
- M&P- MAPS & PLATS
- S.J.C.R. SAN JOAQUIN COUNTY RECORDS
- (M) MEASURED DISTANCE. ALL DISTANCES ARE MEASURED UNLESS NOTED OTHERWISE.

NOTE:

THIS CORNER RECORD DOES NOT VERIFY THIS MONUMENT TO BE IN THE CORRECT POSITION.

Bearing and Distance Table		
BS-@-FS	Bearing	FS DISTANCE
C-A-C	00°00'00"	226.924'(M)
C-A-B	84°32'09"	67.823'(M)
C-A-D	43°04'40"	62.707'(M)
C-A-E	34°33'55"	74.653'(M)
C-A-F	139°08'46"	40.817'(M)
C-A-G	13°47'48"	104.126'(M)
C-A-H	46°11'10"	147.790'(M)

REFERENCE:

(R1) 21-M&P-75, S.J.C.R.