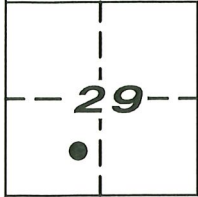


# CORNER RECORD

Agency Index CR-23-165  
Document Number \_\_\_\_\_  
County of SAN JOAQUIN, California

City of STOCKTON

Brief Legal Description LINE COMMON TO LOTS 128 AND 129 OF "QUAIL LAKES, UNIT NO. 4",  
BOOK 21 OF MAPS AND PLATS, PAGE 28, S.J.C.R.



T.2N., R.6E.

### CORNER TYPE

- Government Corner
- Meander
- Rancho
- Control
- Property
- Other

Date of Survey 10/27/2022

### COORDINATES (Optional)

N. \_\_\_\_\_ E. \_\_\_\_\_  
Elevation \_\_\_\_\_  
Units  Metric  U.S. Survey Foot  
Horizontal Datum \_\_\_\_\_  
Zone \_\_\_\_\_ Epoch Date \_\_\_\_\_  
Vertical Datum \_\_\_\_\_

- Complies with Public Resources Code §§8801-8819
- Complies with Public Resources Code §§8890-8902

PLS Act Ref:  8765(d)  8771  8773  Other: \_\_\_\_\_

Corner/Monument:  Left as found  Established  Rebuilt  Pre-Construction  
 Found and tagged  Reestablished  Referenced  Post-Construction

Narrative of corner identified and monument as found, set, reset, replaced, or removed:  
 See sheet #2 for description (s):

FOUND ONE (1) CUT "+" IN WALK AT APPARENT PROJECTION OF PROPERTY LINE COMMON TO LOTS 128 AND 129, UNKNOWN ORIGIN; FOUND ONE (1) 3/4" IRON PIN IN MONUMENT WELL (R1); SET THREE (3) CONCRETE NAILS WITH BRASS TAG "LS 6953" AS WITNESS CORNERS, ALL AS SHOWN ON SHEET 2.

### SURVEYOR'S STATEMENT

This Corner Record was prepared by me or under my direction in conformance with the Professional Land Surveyors' Act on MAY 8, 2023

Signed [Signature] P.L.S. or R.C.E. No. 6953



### COUNTY SURVEYOR'S STATEMENT

This Corner Record was received May 8, 2023

and examined and filed June 6, 2023

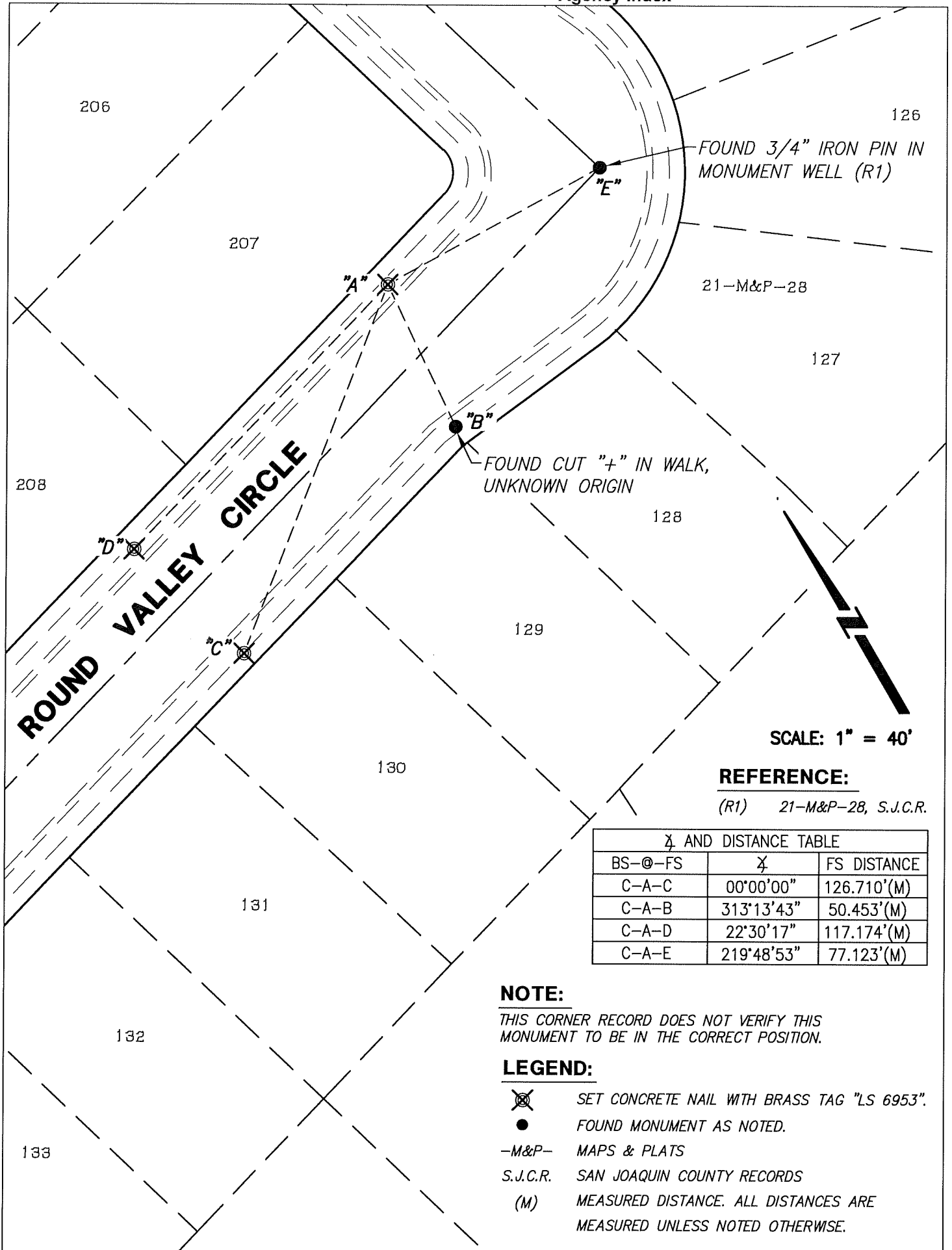
Signed James E. Hart P.L.S. or R.C.E. No. 8657

Title County Surveyor



County Surveyor's Comment \_\_\_\_\_

\_\_\_\_\_  
 \_\_\_\_\_



FOUND 3/4" IRON PIN IN MONUMENT WELL (R1)

FOUND CUT "+" IN WALK, UNKNOWN ORIGIN

21-M&P-28

SCALE: 1" = 40'

**REFERENCE:**

(R1) 21-M&P-28, S.J.C.R.

Bearing and Distance Table		
BS-@-FS	Bearing	FS DISTANCE
C-A-C	00°00'00"	126.710'(M)
C-A-B	313°13'43"	50.453'(M)
C-A-D	22°30'17"	117.174'(M)
C-A-E	219°48'53"	77.123'(M)

**NOTE:**

THIS CORNER RECORD DOES NOT VERIFY THIS MONUMENT TO BE IN THE CORRECT POSITION.

**LEGEND:**

- SET CONCRETE NAIL WITH BRASS TAG "LS 6953".
- FOUND MONUMENT AS NOTED.
- M&P- MAPS & PLATS
- S.J.C.R. SAN JOAQUIN COUNTY RECORDS
- (M) MEASURED DISTANCE. ALL DISTANCES ARE MEASURED UNLESS NOTED OTHERWISE.