

CORNER RECORD

Agency Index CR-23-158

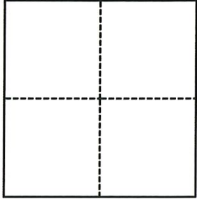
Document Number _____

City of LATHROP County of SAN JOAQUIN, California

Brief Legal Description LOT8, TR. 3401, FILED IN BOOK 38 OF MAPS & PLATS, PAGE 102. ALSO PART OF RECLAMATION DISTRICT 17 SURVEY CONTROL FILED IN BOOK 38 OF SURVEYS, PAGE 119

CORNER TYPE

COORDINATES (Optional)



- Government Corner
- Meander
- Rancho
- Control
- Property
- Other

N. 2120306.96 E. 6325598.80

Elevation _____

Units Metric U.S. Survey Foot

Horizontal Datum NAD83

Zone 3 Epoch Date 1991.35

Vertical Datum _____

Complies with Public Resources Code §§8801-8819

Complies with Public Resources Code §§8890-8902

Date of Survey February 9, 2023

PLS Act Ref.: 8765(d) 8771 8773 Other:

Corner/Monument: Left as found Established Rebuilt Pre-Construction
 Found and tagged Reestablished Referenced Post-Construction

Narrative of corner identified and monument as found, set, reset, replaced, or removed:

See sheet #2 for description(s):

SURVEYOR'S STATEMENT

This Corner Record was prepared by me or under my direction in conformance with the Professional Land Surveyors' Act on May 26, 2023

Signed Brett A. Setness P.L.S. or R.C.E. No. 8265



COUNTY SURVEYOR'S STATEMENT

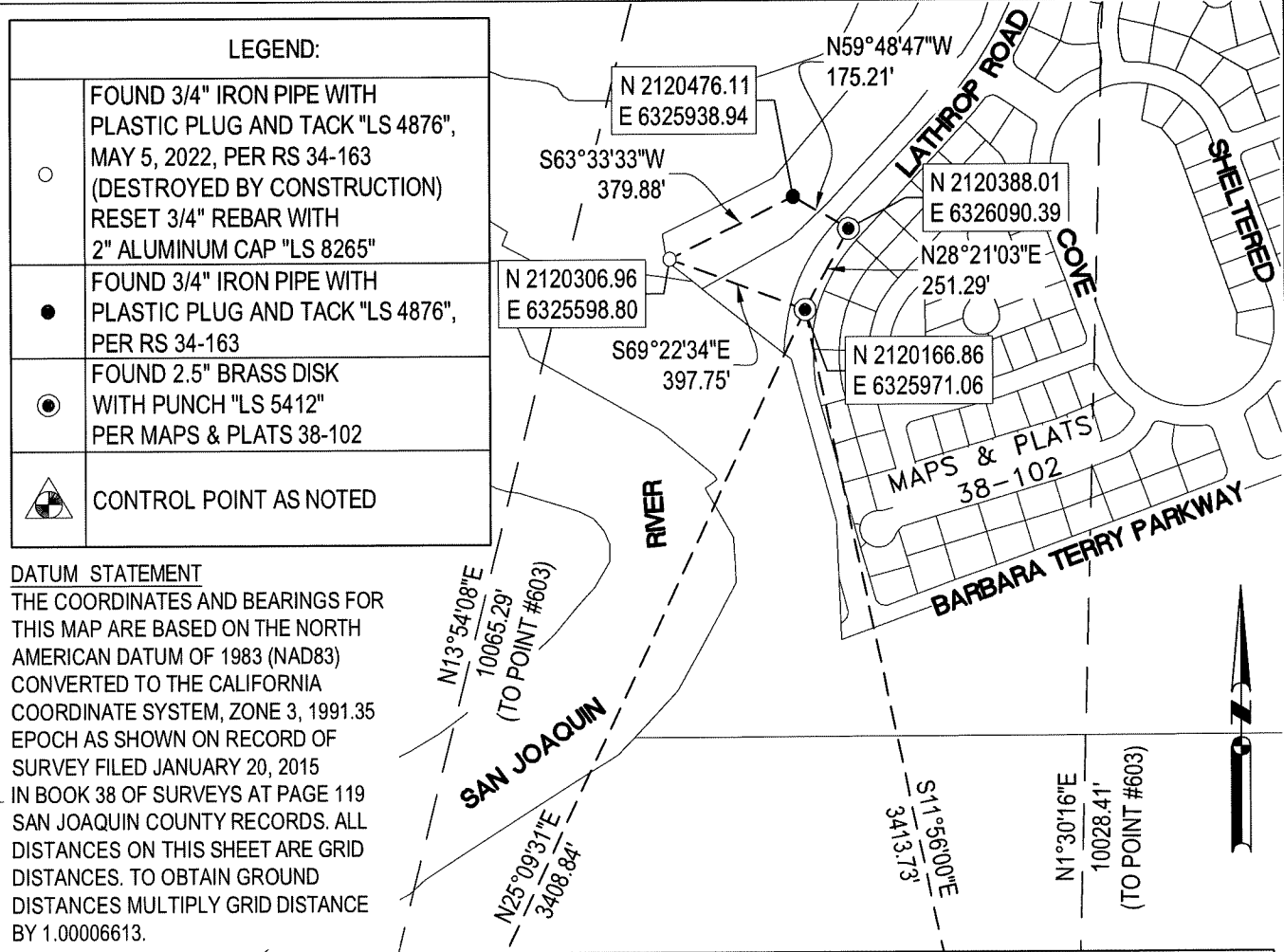
This Corner Record was received May 30, 2023 and examined and filed June 6, 2023

Signed James E. Hart P.L.S. or R.C.E. No. 8657

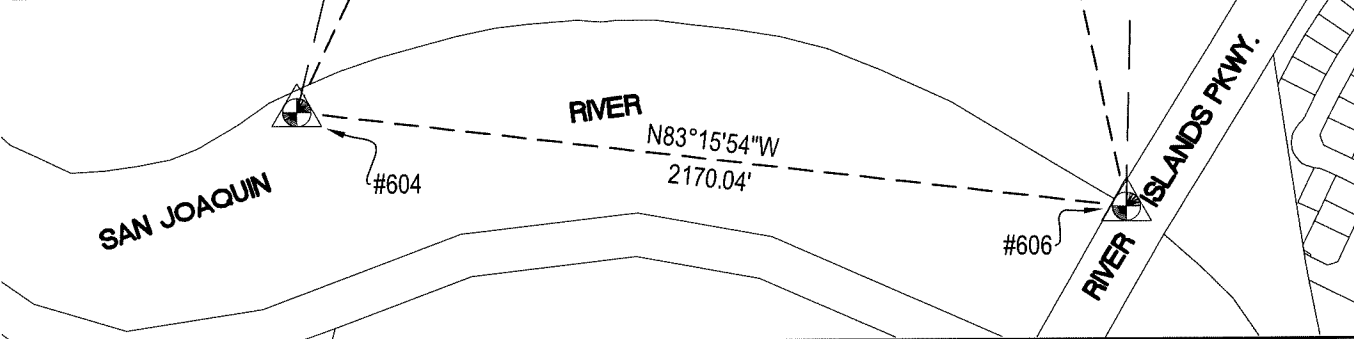
Title County Surveyor



County Surveyor's Comment



| CONTROL TABLE | | | |
|---------------|------------|------------|---------------------------------------------------------------------------------------------------------------------------|
| POINT # | NORTHING | EASTING | |
| 603 | 2126851.85 | 6326940.23 | FOUND 5/8IN REBAR WITH 2.5IN ALUMINUM CAP "KSN CONTROL" (RS 38-119) 925' ± SOUTH OF DE LIMA ROAD ON RD17 LEVEE |
| 604 | 2117081.40 | 6324521.87 | 5/8IN REBAR WITH 2.5IN ALUMINUM CAP "KSN CONTROL", MAY 5, 2022 (DESTROYED BY CONSTRUCTION) SET #606 AS REFERENCE MONUMENT |
| 606 | 2116826.90 | 6326676.93 | SET 1IN BRASS DISK WITH PUNCH "KSN CONTROL" IN NW SIDEWALK OF APPROACH TO RIVER ISLAND PARKWAY BRIDGE |



| | | | |
|--------------------------------------------------------------------------------------------------------------------------------------|------------------------------------------------------------------------------------------------------------------------------------------------------------------------------------------------------------------------------|--------------------------------------------------------------------------------------------------------------------------|-----------------------------------------------|
| <p>KJELSDEN SINNOCK NEUDECK CIVIL ENGINEERS & LAND SURVEYORS www.ksninc.com</p> | <p>711 N. Pershing Avenue Stockton, CA 95203 209-946-0268</p> <p>1550 Harbor Blvd., Suite 212 West Sacramento, CA 95691 916-403-5900</p> | <p>RECLAMATION DISTRICT 17 CUT-OFF WALL CONSTRUCTION MONUMENT PRESERVATION</p> | <p>DRAWING SCALE</p> <p>1" = 500'</p> |
| | | | <p>ORIG. DRAWING SCALE</p> <p>0 1/4" 1/2"</p> |