

CORNER RECORD

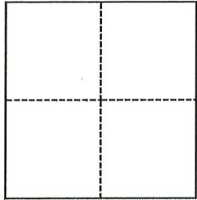
Agency Index CR-23-156
 Document Number _____

City of LATHROP County of SAN JOAQUIN, California

Brief Legal Description MONUMENT LOCATED AT THE INTERSECTION OF STANFORD CROSSING AND GOLDEN VALLEY PARKWAY, AS PER ON TRACT MAP 3533, MAPS & PLATS BOOK 40 PAGE 100, SAN JOAQUIN COUNTY RECORD

CORNER TYPE

COORDINATES (Optional)



- Government Corner
- Meander
- Rancho
- Control
- Property
- Other

Date of Survey FEBRUARY 13, 2023

N. _____ E. _____
 Elevation _____
 Units Metric U.S. Survey Foot
 Horizontal Datum _____
 Zone _____ Epoch Date _____
 Vertical Datum _____
 Complies with Public Resources Code §§8801-8819
 Complies with Public Resources Code §§8890-8902

- PLS Act Ref.: 8765(d) 8771 8773 Other:
- Corner/Monument: Left as found Established Rebuilt Pre-Construction
 Found and tagged Reestablished Referenced Post-Construction

Narrative of corner identified and monument as found, set, reset, replaced, or removed:
 See sheet #2 for description(s):

FOUND 2-1/2" BRASS DISK MONUMENT STAMPED "LS 6186" IN CONCRETE MONUMENT BOX AT RECORD LOCATION OF THE INTERSECTION OF STANFORD CROSSING AND GOLDEN VALLEY PARKWAY, PER TRACT MAP 3533, MAPS & PLATS BOOK 40, PAGE 100, SAN JOAQUIN COUNTY RECORDS. SURVEY REFERENCE POINTS HAVE BEEN SET AS SHOWN ON THIS CORNER RECORD FOR FUTURE REESTABLISHMENT.

SURVEYOR'S STATEMENT

This Corner Record was prepared by me or under my direction in conformance with the Professional Land Surveyors' Act on MARCH 3, 2023
 Signed [Signature] P.L.S. or R.C.E. No. 8817

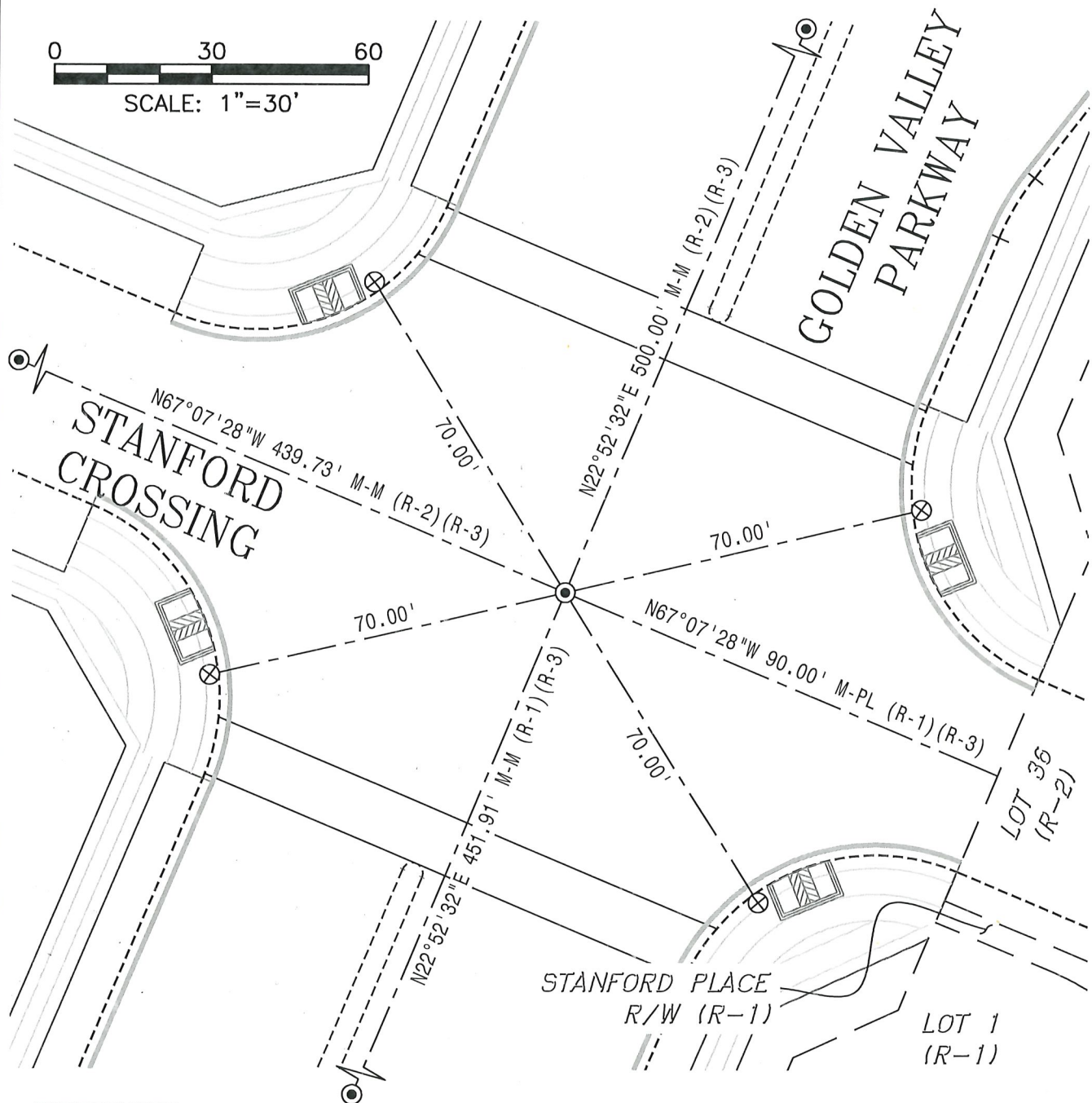
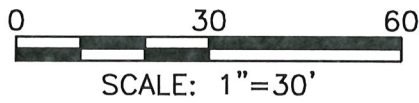


COUNTY SURVEYOR'S STATEMENT

This Corner Record was received May 24, 2023
 and examined and filed June 5, 2023
 Signed James E. Hart P.L.S. or R.C.E. No. 8657
 Title County Surveyor



County Surveyor's Comment



REFERENCES:

- (R-1) PARCEL MAP 22-06, PM BK 27, PG 47, SAN JOAQUIN COUNTY RECORDS
- (R-2) TRACT MAP 3811, M&P BK 43, PG 118, SAN JOAQUIN COUNTY RECORDS
- (R-3) TRACT MAP 3533, M&P BK 40, PG 100, SAN JOAQUIN COUNTY RECORDS

LEGEND:

- FOUND 2-1/2" BRASS DISK STAMPED "LS 6186" IN CONCRETE MONUMENT BOX AT RECORD LOCATION PER (R-3)
- ⊗ SET REFERENCE POINT, SCRIBED X ON TC
- (R-1) REFERENCE
- M-M MONUMENT TO MONUMENT
- M&P MAPS & PLATS
- PL PROPERTY LINE
- PM PARCEL MAPS
- R/W RIGHT OF WAY

