

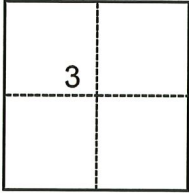
CORNER RECORD

Agency Index CR-23-155
Document Number _____

City of Lodi County of San Joaquin, California
Brief Legal Description Lot 48, Tract No. 712 "Elmhaven", Maps & Plats 17-71, S.J.C.R.

CORNER TYPE

COORDINATES (Optional)



- Government Corner
- Meander
- Rancho
- Control
- Property
- Other

Date of Survey April 21, 2023

N. _____ E. _____

Elevation _____

Units Metric U.S. Survey Foot

Horizontal Datum _____

Zone _____ Epoch Date _____

Vertical Datum _____

Complies with Public Resources Code §§8801-8819

Complies with Public Resources Code §§8890-8902

T.3N., R.6E., M.D.B.&M.

PLS Act Ref.: 8765(d) 8771 8773 Other:

Corner/Monument: Left as found Established Rebuilt Pre-Construction
 Found and tagged Reestablished Referenced Post-Construction

Narrative of corner identified and monument as found, set, reset, replaced, or removed:

See sheet #2 for description(s):

SURVEYOR'S STATEMENT

This Corner Record was prepared by me or under my direction in conformance with

the Professional Land Surveyors' Act on May 15, 2023

Signed Joe Murphy (P.L.S.) or R.C.E. No. 7269



COUNTY SURVEYOR'S STATEMENT

This Corner Record was received May 16, 2023

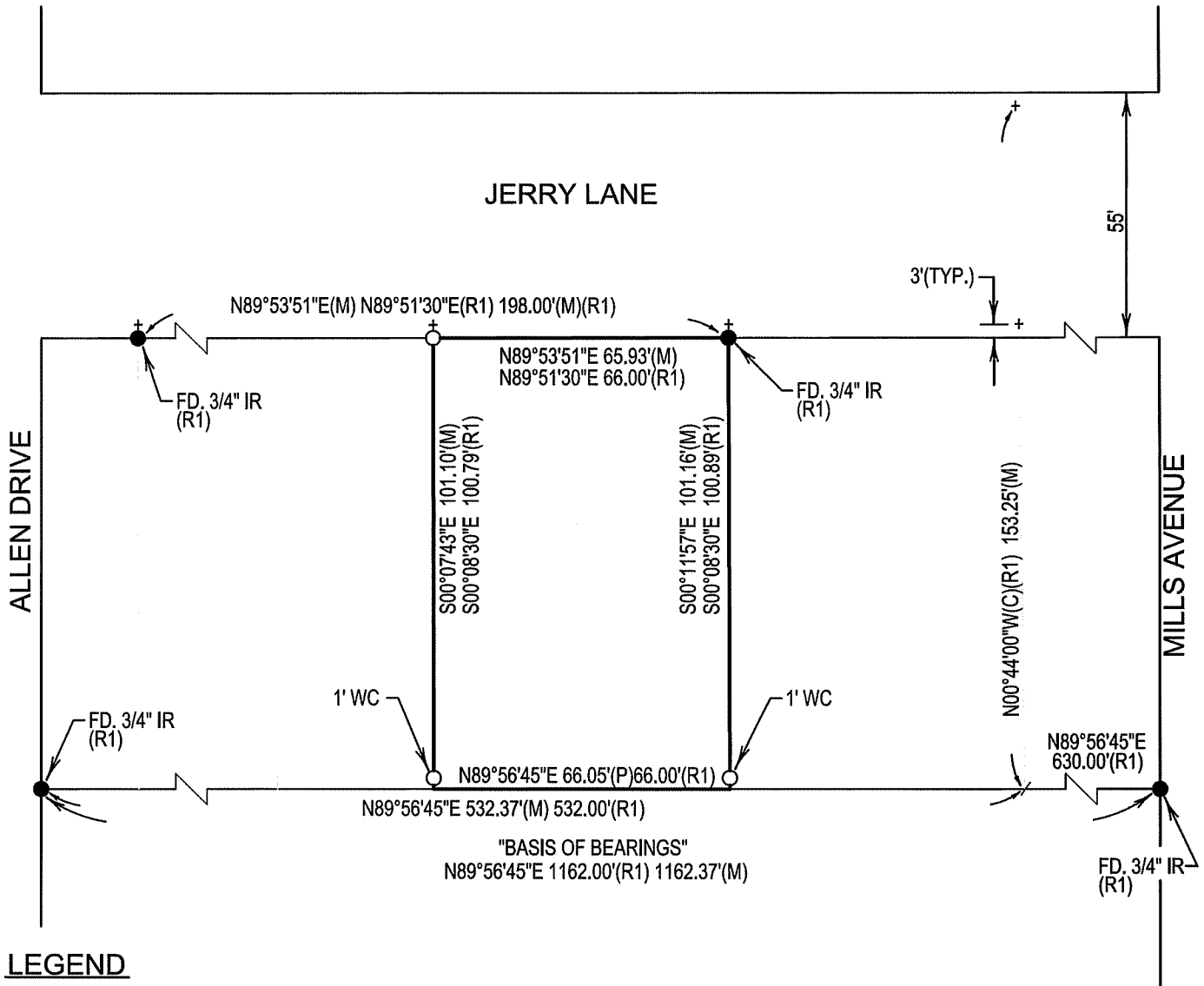
and examined and filed May 30, 2023

Signed James E. Hart P.L.S. or R.C.E. No. 8657

Title County Surveyor

County Surveyor's Comment





LEGEND

- | | | | |
|----------|------------------------------------------|--------|------------------------|
| FD. | FOUND | (C) | CALCULATED FROM RECORD |
| IR | IRON ROD | (TYP.) | TYPICAL |
| (M) | MEASURED | | |
| S.J.C.R. | SAN JOAQUIN COUNTY RECORDS | | |
| WC | WITNESS CORNER | | |
| (P) | PRORATED | | |
| M.&P. | MAPS & PLATS | | |
| ○ | SET 3/4" X 30" IRON ROD CAPPED "LS 7269" | | |
| ● | FOUND MONUMENT AS NOTED | | |
| —/— | DIMENSION POINT | | |
| + | FOUND CHISELED "+" (NO RECORD) | | |

REFERENCE

(R1) M.&P. 17-71, S.J.C.R.