

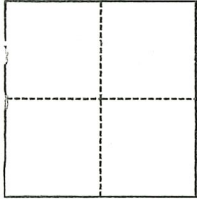
CORNER RECORD

Agency Index CR-23-148
Document Number: _____

City of _____ County of SAN JOAQUIN California
Brief Legal Description PARCEL AS SHOWN ON R.S. 22-89, S.J.C.R.

CORNER TYPE

COORDINATES (Optional)



- Government Corner
- Meander
- Rancho
- Control
- Property
- Other

Date of Survey April 5, 2023

N. _____ E. _____
 Elevation _____
 Units Metric U.S. Survey Foot
 Horizontal Datum _____
 Zone _____ Epoch Date _____
 Vertical Datum _____
 Complies with Public Resources Code §§8801-8819
 Complies with Public Resources Code §§8890-8902

PLS Act Ref.: 8765(d) 8771 8773 Other: _____
 Corner/Monument: Left as found Established Rebuilt Pre-Construction
 Found and tagged Reestablished Referenced Post-Construction

Narrative of corner identified and monument as found, set, reset, replaced, or removed:

See sheet #2 for description(s):

SEE SHEET 2 FOR MONUMENTS FOUND.

SURVEYOR'S STATEMENT

This Corner Record was prepared by me or under my direction in conformance with
 the Professional Land Surveyors' Act on 4/20/2023
 Signed Walter John Shoup P.L.S. or R.C.E. No. 7736

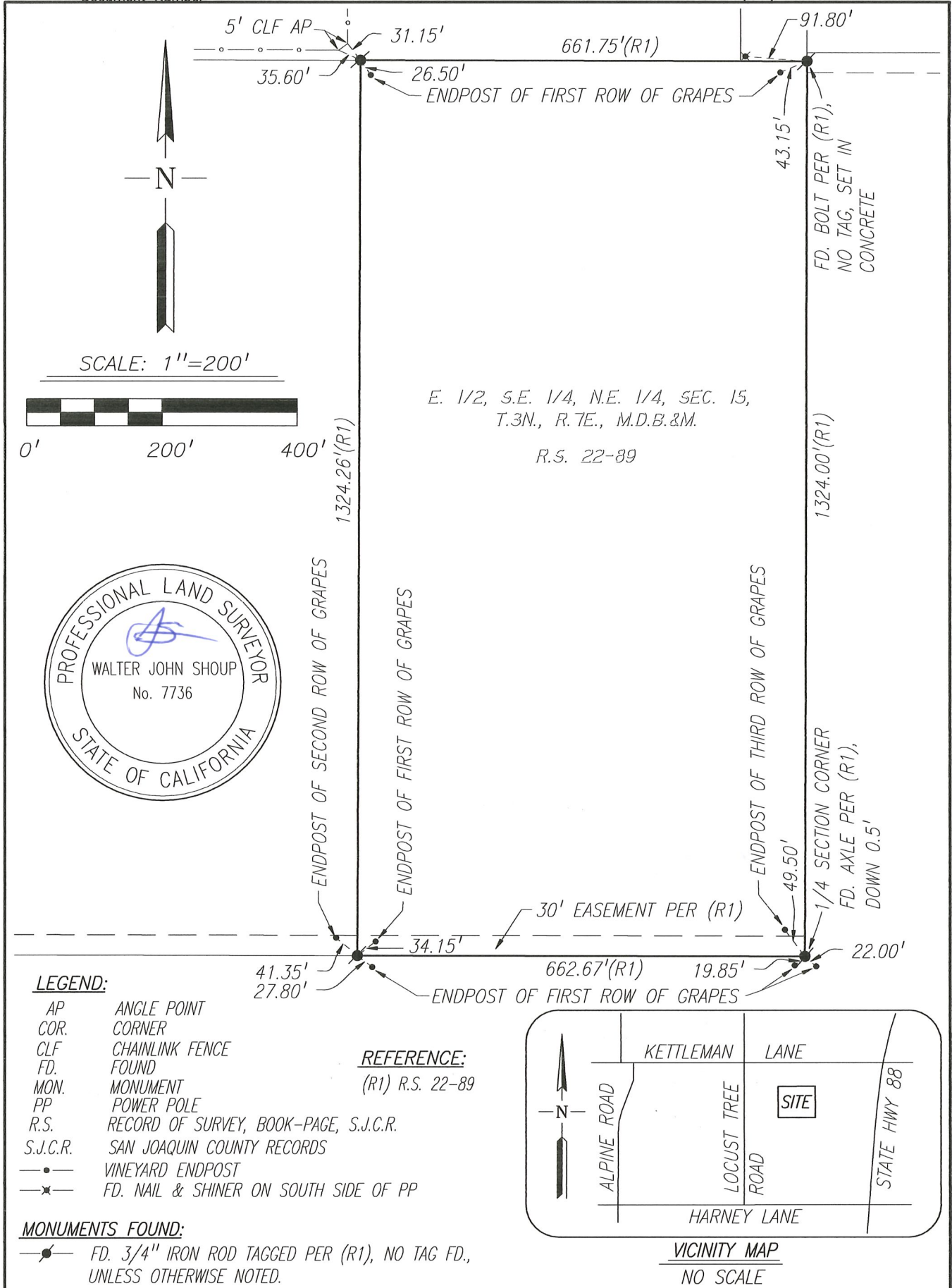


COUNTY SURVEYOR'S STATEMENT

This Corner Record was received April 21, 2023
 and examined and filed May 12, 2023
 Signed James E. Hart P.L.S. or R.C.E. No. 8657
 Title County Surveyor



County Surveyor's Comment



E. 1/2, S.E. 1/4, N.E. 1/4, SEC. 15,
 T.3N., R.7E., M.D.B.&M.
 R.S. 22-89



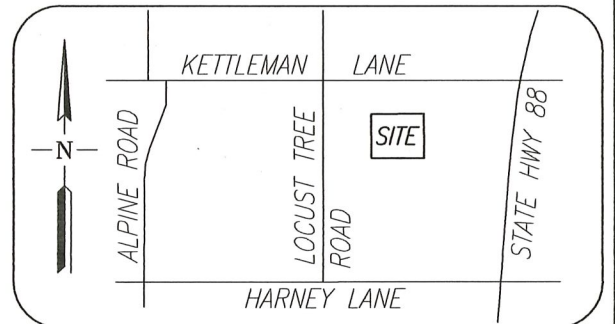
LEGEND:

- AP ANGLE POINT
- COR. CORNER
- CLF CHAINLINK FENCE
- FD. FOUND
- MON. MONUMENT
- PP POWER POLE
- R.S. RECORD OF SURVEY, BOOK-PAGE, S.J.C.R.
- S.J.C.R. SAN JOAQUIN COUNTY RECORDS
- VINEYARD ENDPOST
- *— FD. NAIL & SHINER ON SOUTH SIDE OF PP

REFERENCE:
 (R1) R.S. 22-89

MONUMENTS FOUND:

- FD. 3/4" IRON ROD TAGGED PER (R1), NO TAG FD., UNLESS OTHERWISE NOTED.



VICINITY MAP
 NO SCALE

Scale: 1"=200'
 Job No.: 23-038

CORNER RECORD
EXHIBIT MAP

Date: 04/20/2023
 DWG: 23038SV