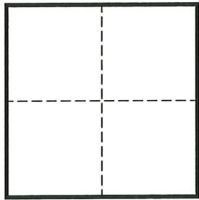


# CORNER RECORD

Agency Index CR-23-146

Document Number \_\_\_\_\_

City of STOCKTON County of SAN JOAQUIN, CaliforniaBrief Legal Description MONUMENT AT THE INTERSECTION OF MILTON STREET AND BIEGHLE ALLEY**CORNER TYPE****COORDINATES (Optional)**

- Government Corner     Control  
 Meander     Property  
 Rancho     Other

N. \_\_\_\_\_ E. \_\_\_\_\_

Elevation \_\_\_\_\_

Units  Metric  U.S. Survey Foot

Horizontal Datum \_\_\_\_\_

Zone \_\_\_\_\_ Epoch Date \_\_\_\_\_

Vertical Datum \_\_\_\_\_

 Complies with Public Resources Code §§8801-8819 Complies with Public Resources Code §§8890-8902PLS Act Ref.:  8765(d)  8771  8773  Other:

Corner/  
Monument:  Left as found  Established  Rebuilt  Pre-Construction  
 Found and tagged  Reestablished  Referenced  Post-Construction

Narrative of corner identified and monument as found, set, reset, replaced, or removed:

 See sheet #2 for description(s):

FOUND 3/4" REBAR WITH NO PUNCH IN MONUMENT BOX LOCATED AT THE INTERSECTION OF MILTON STREET AND BIEGHLE ALLEY AS PER PARCEL MAP, BOOK 24 OF PARCEL MAPS AT PAGE 53, SAN JOAQUIN COUNTY RECORDS.

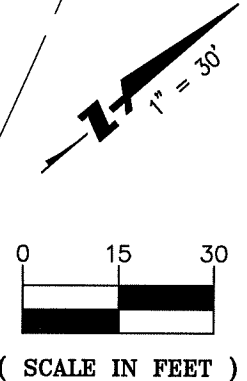
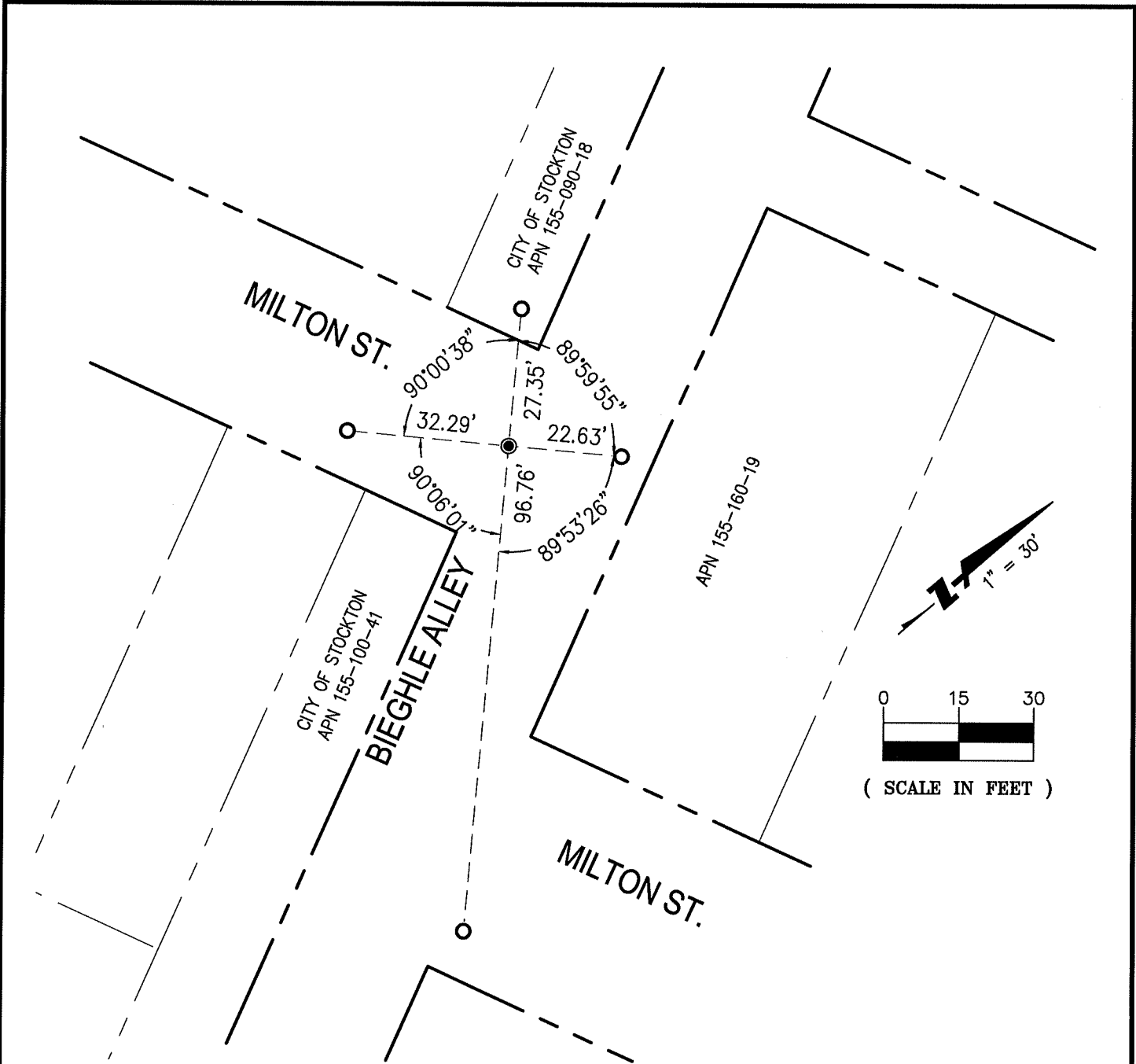
MONUMENT WAS REFERENCED PRIOR TO THE START OF CONSTRUCTION OF A WATER MAIN REPLACEMENT, PROJECT NO. STK-18AB2 BY CALIFORNIA WATER SERVICE.

**SURVEYOR'S STATEMENT**

This Corner Record was prepared by me or under my direction in conformance with

the Professional Land Surveyors' Act on MAY 5, 2022Signed  P.L.S. or R.C.E. No. 9251**COUNTY SURVEYOR'S STATEMENT**This Corner Record was received April 26, 2023and examined and filed May 12, 2023Signed  P.L.S. or R.C.E. No. 8657Title County Surveyor**County Surveyor's Comment**

Empty dashed box for County Surveyor's Comment.



### LEGEND

- FOUND 3/4" REBAR WITH NO PUNCH IN MONUMENT BOX AS PER PARCEL MAP, BOOK 24 OF PARCEL MAPS AT PAGE 53, SAN JOAQUIN COUNTY RECORDS.
- SET MAG NAIL ON TOP OF CURB.

**BKF**  
 1730 N. FIRST STREET  
 SUITE 600  
 SAN JOSE, CA 95112  
 (408) 467-9100  
 www.bkf.com

SUBJECT PRE-CONSTRUCTION CORNER RECORD  
AT MILTON STREET AND BIEGHLE ALLEY

JOB NO. 20191483-STOCKTON MON PRESERVATION  
 BY JML/EC APPR. BHS DATE 05-05-2022

I:\2019\191483-STOCKTON MON PRESERVATION\CORNER\_REC\_05-10-22\OR\_MILTON\_ST-BIEGHLE\_ALLEY.JPG