

CORNER RECORD

Agency Index CR-23-143
Document Number _____

City of Tracy County of San Joaquin, California
Brief Legal Description Lots 14, 15, 16, 17, 18, 19 & 20 of Block 62, Town of Tracy, Maps & Plats 2-63,
S.I.C.R.

CORNER TYPE

COORDINATES (Optional)



- Government Corner
- Meander
- Rancho
- Control
- Property
- Other

Date of Survey March 15, 2023

N. _____ E. _____
Elevation _____

Units Metric U.S. Survey Foot

Horizontal Datum _____

Zone _____ Epoch Date _____

Vertical Datum _____

- Complies with Public Resources Code §§8801-8819
- Complies with Public Resources Code §§8890-8902

T.2S., R.5E., M.D.B.&M.

PLS Act Ref.: 8765(d) 8771 8773 Other:

Corner/
Monument: Left as found Established Rebuilt Pre-Construction
 Found and tagged Reestablished Referenced Post-Construction

Narrative of corner identified and monument as found, set, reset, replaced, or removed:
 See sheet #2 for description(s):

SURVEYOR'S STATEMENT

This Corner Record was prepared by me or under my direction in conformance with
the Professional Land Surveyors' Act on April 18, 2023
Signed [Signature] (P.L.S) or R.C.E. No. 7269

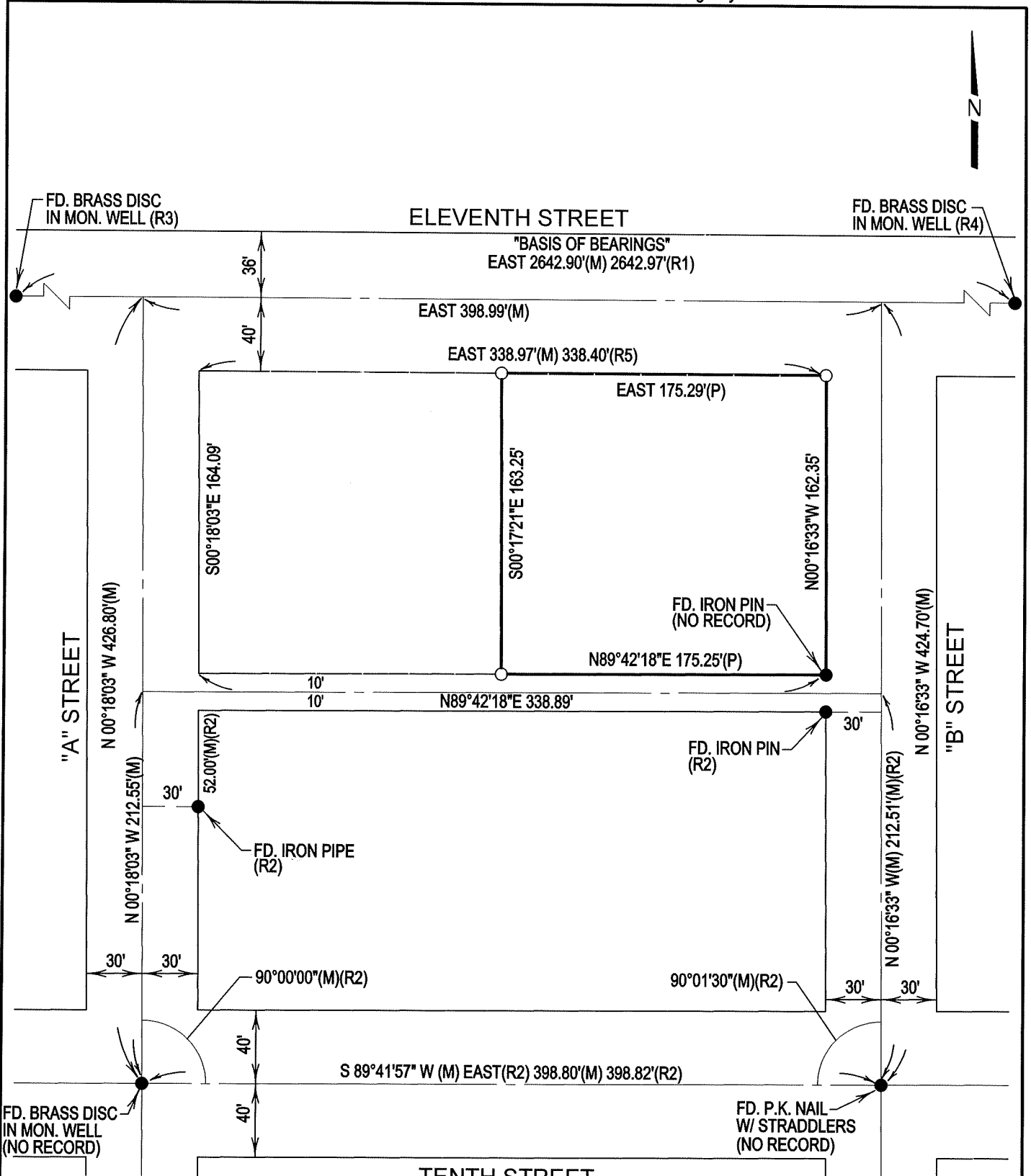


COUNTY SURVEYOR'S STATEMENT

This Corner Record was received April 18, 2023
and examined and filed April 27, 2023
Signed James E. Hart P.L.S. or R.C.E. No. 8657
Title County Surveyor



County Surveyor's Comment



LEGEND

FD. FOUND
 R.S. RECORD OF SURVEY
 (M) MEASURED
 S.J.C.R. SAN JOAQUIN COUNTY RECORDS
 S.J.C.S.R. SAN JOAQUIN COUNTY SURVEYOR'S RECORDS

○ SET 3/4" X 30" IRON ROD CAPPED "LS 7269"
 ● FOUND MONUMENT AS NOTED
 C.R. CORNER RECORD
 (P) PRORATED
 M.&P. MAPS & PLATS

REFERENCES

(R1) R.S. 30-130, S.J.C.R.
 (R2) R.S. 19-141, S.J.C.R.
 (R3) C.R. 95-006, S.J.C.S.R.
 (R4) C.R. 95-008, S.J.C.S.R.
 (R5) M.&P. 2-63, S.J.C.R.