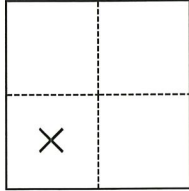


CORNER RECORD

Agency Index CR-23-142
 Document Number _____

City of MANTECA County of SAN JOAQUIN, California
 Brief Legal Description 1.168 ACRE PARCEL PER PM 2-83

CORNER TYPE



- Government Corner Control
 Meander Property
 Rancho Other

Date of Survey October 26, 2022

COORDINATES (Optional)

N. _____ E. _____
 Elevation _____
 Units Metric U.S. Survey Foot
 Horizontal Datum _____
 Zone _____ Epoch Date _____
 Vertical Datum _____
 Complies with Public Resources Code §§8801-8819
 Complies with Public Resources Code §§8890-8902

PLS Act Ref.: 8765(d) 8771 8773 Other:
 Corner/
 Monument: Left as found Established Rebuilt Pre-Construction
 Found and tagged Reestablished Referenced Post-Construction

Narrative of corner identified and monument as found, set, reset, replaced, or removed:
 See sheet #2 for description(s):

FOUND 3/4" REBAR, 3/4" IRON PIPE AND 5/8" REBAR.
 SET CITY OF MANTECA BENCHMARK (BM 54):EL = 42.82' NAVD 88

*BENCHMARK DESIGNATION F83 (PID: HS0211) USED AS REFERENCE
 TO ESTABLISH BM 54 ELEVATION.

SURVEYOR'S STATEMENT

This Corner Record was prepared by me or under my direction in conformance with
 the Professional Land Surveyors' Act on August 7, 2023
 Signed [Signature] P.L.S. or R.C.E. No. 8513



COUNTY SURVEYOR'S STATEMENT

This Corner Record was received August 15, 2023
 and examined and filed August 21, 2023
 Signed James E. Hart P.L.S. or R.C.E. No. 8657
 Title County Surveyor



County Surveyor's Comment

LEGEND:

- PROPERTY LINE PER (PARCEL MAP BK.2 PG.83 S.J.C.R.)
- EASEMENT
- FOUND MONUMENT, AS NOTED
- ▲ MONUMENT TIES, AS NOTED
- SET MONUMENT, AS NOTED

ABBREVIATIONS:

- APN ACCESSOR'S PARCEL NUMBER
- BM BENCHMARK
- C.R. CORNER RECORD, SAN JOAQUIN COUNTY SURVEYOR'S RECORDS
- FD. FOUND
- LS. LAND SURVEYOR'S
- L. LENGTH
- M&P MAPS AND PLATS
- P.M. PARCEL MAP
- R. RADIUS
- S.J.C.R. SAN JOAQUIN COUNTY RECORDS
- SNF. SEARCH NOT FOUND

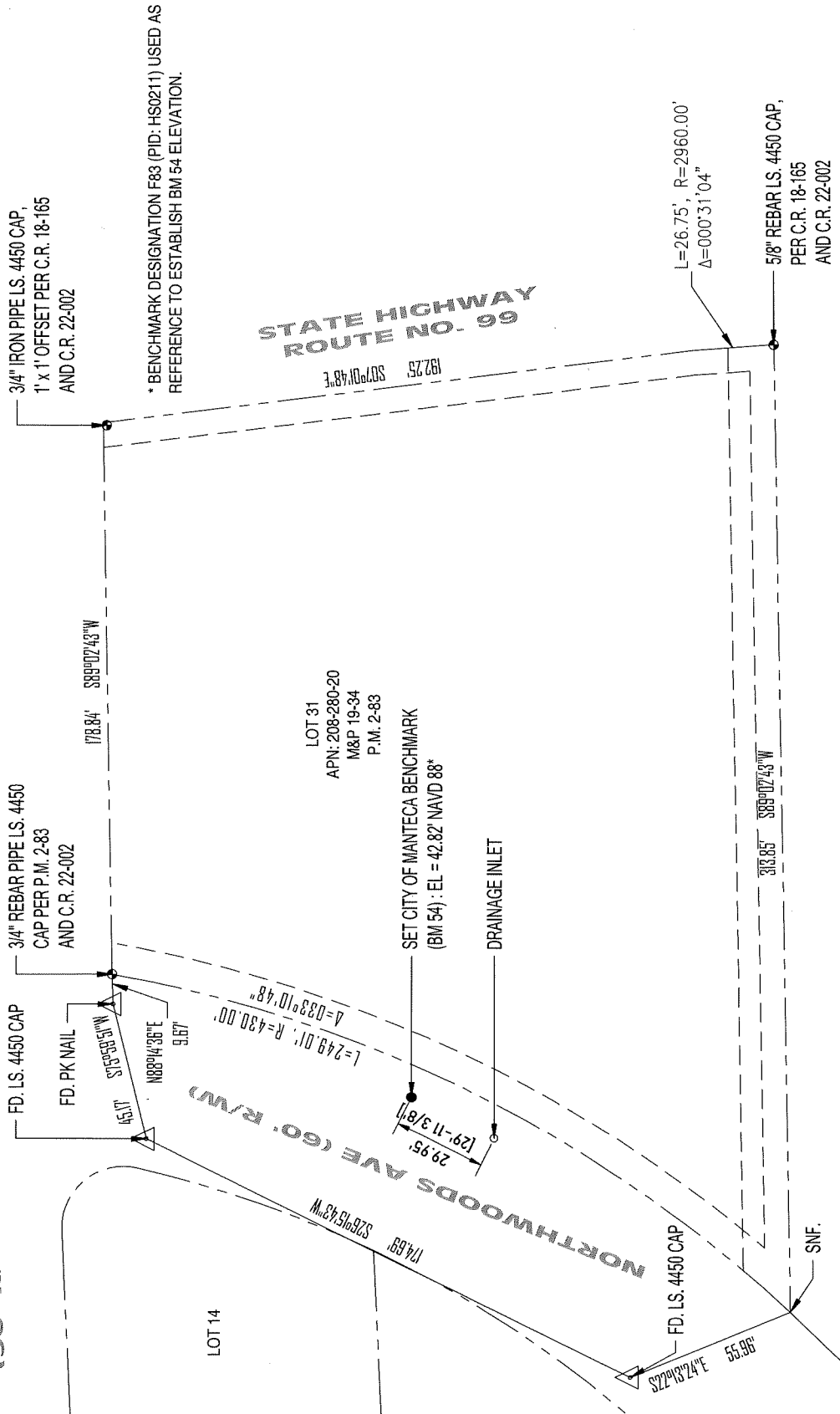
**MCNARY CIR
(50' R/W)**

LOT 14

LOT 31
APN: 208-280-20
M&P 19-34
P.M. 2-83

NORTHWOODS AVE (60' R/W)

**STATE HIGHWAY
ROUTE NO. 99**



3/4" IRON PIPE L.S. 4450 CAP,
1' x 1' OFFSET PER C.R. 18-165
AND C.R. 22-002

3/4" REBAR PIPE L.S. 4450
CAP PER P.M. 2-83
AND C.R. 22-002

FD. L.S. 4450 CAP
FD. PK NAIL

* BENCHMARK DESIGNATION F83 (PID: HS0211) USED AS
REFERENCE TO ESTABLISH BM 54 ELEVATION.

SET CITY OF MANTECA BENCHMARK
(BM 54) : EL = 42.82' NAVD 88"

DRAINAGE INLET

L=26.75', R=2960.00'
Δ=000°31'04"

5/8" REBAR L.S. 4450 CAP,
PER C.R. 18-165
AND C.R. 22-002

SNF.

