

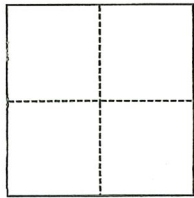
# CORNER RECORD

Agency Index CR-23-135  
 Document Number \_\_\_\_\_

City of STOCKTON County of SAN JOAQUIN, California  
 Brief Legal Description PARCEL 4, P.M. 23-118, S.J.C.R.

### CORNER TYPE

### COORDINATES (Optional)



- Government Corner     Control  
 Meander                     Property  
 Rancho                         Other

N. \_\_\_\_\_ E. \_\_\_\_\_  
 Elevation \_\_\_\_\_  
 Units     Metric             U.S. Survey Foot  
 Horizontal Datum \_\_\_\_\_  
 Zone \_\_\_\_\_ Epoch Date \_\_\_\_\_  
 Vertical Datum \_\_\_\_\_  
 Complies with Public Resources Code §§8801-8819  
 Complies with Public Resources Code §§8890-8902

Date of Survey February 14, 2023

PLS Act Ref.:     8765(d)             8771             8773             Other:  
 Corner/  
 Monument:     Left as found             Established             Rebuilt             Pre-Construction  
                    Found and tagged             Reestablished             Referenced             Post-Construction

Narrative of corner identified and monument as found, set, reset, replaced, or removed:

See sheet #2 for description(s):

SEE PAGE 2 OF 2 FOR EXHIBIT MAP SHOWING MONUMENTS FOUND AND SET.

### SURVEYOR'S STATEMENT

This Corner Record was prepared by me or under my direction in conformance with  
 the Professional Land Surveyors' Act on February 21, 2023  
 Signed Walter John Shoup P.L.S. or R.C.E. No. L-7736



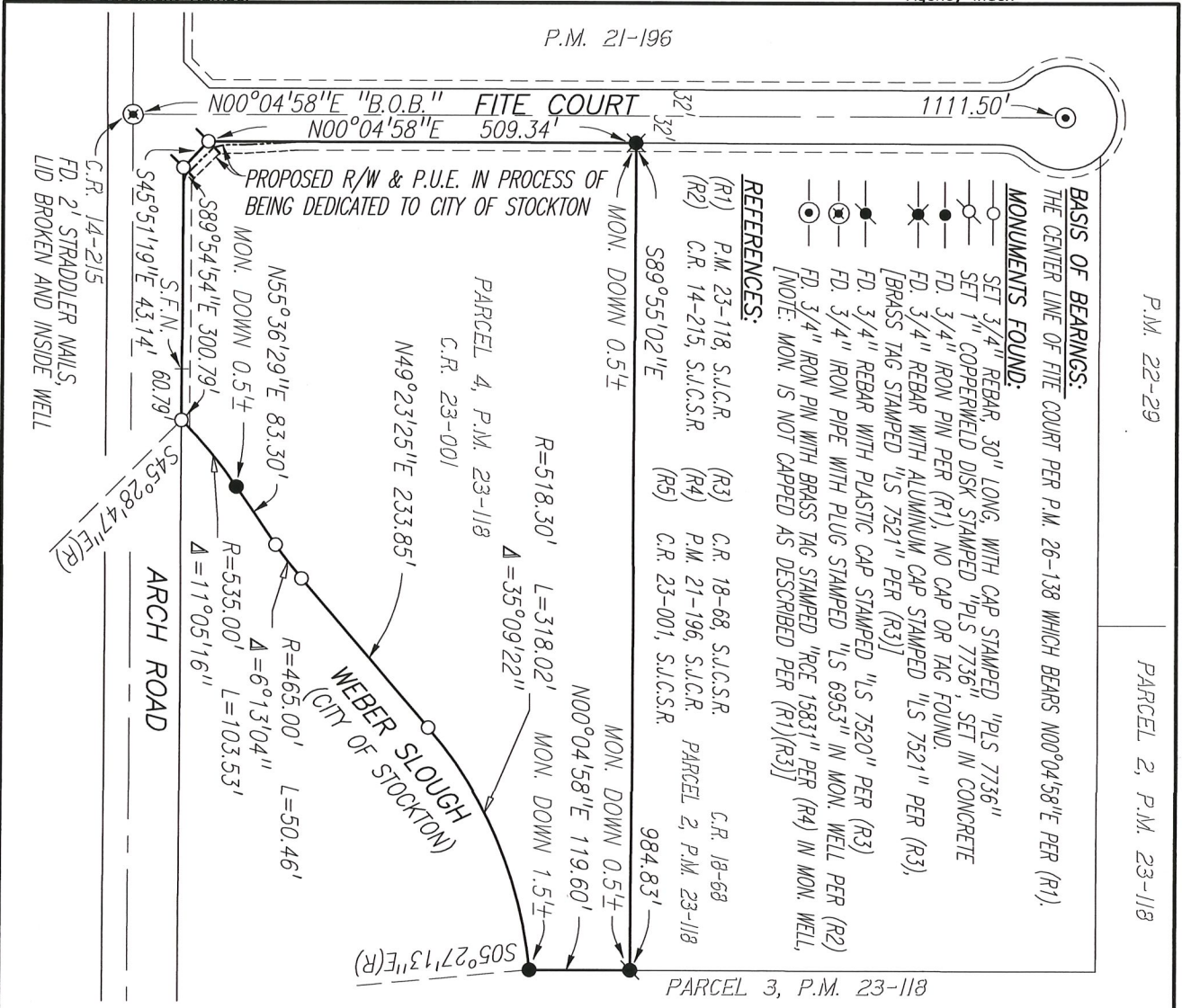
### COUNTY SURVEYOR'S STATEMENT

This Corner Record was received April 6, 2023  
 and examined and filed April 14, 2023  
 Signed James E. Hart P.L.S. or R.C.E. No. 8657  
 Title County Surveyor



County Surveyor's Comment

P.M. 21-196



P.M. 22-29

PARCEL 2, P.M. 23-118

PARCEL 3, P.M. 23-118



Scale: 1"=200'	<b>CORNER RECORD EXHIBIT MAP</b>	Date: 04/06/2023
Job No.: 22-131		DWG: 22131CR-POST