

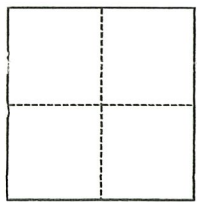
CORNER RECORD

Agency Index CR-23-134
Document Number _____

City of _____ County of SAN JOAQUIN, California
Brief Legal Description PARCEL A, P.M. 13-65, S.J.C.R.

CORNER TYPE

COORDINATES (Optional)



- Government Corner
- Meander
- Rancho
- Control
- Property
- Other

N. _____ E. _____
 Elevation _____
 Units Metric U.S. Survey Foot
 Horizontal Datum _____
 Zone _____ Epoch Date _____
 Vertical Datum _____
 Complies with Public Resources Code §§8801-8819
 Complies with Public Resources Code §§8890-8902

Date of Survey February 9, 2023

- PLS Act Ref.: 8765(d) 8771 8773 Other: _____
- Corner/Monument: Left as found Established Rebuilt Pre-Construction
 Found and tagged Reestablished Referenced Post-Construction

Narrative of corner identified and monument as found, set, reset, replaced, or removed:

See sheet #2 for description(s):

SEE PAGE 2 OF 2 FOR EXHIBIT MAP SHOWING MONUMENTS FOUND.

SURVEYOR'S STATEMENT

This Corner Record was prepared by me or under my direction in conformance with
the Professional Land Surveyors' Act on February 21, 2023

Signed Walter John Shoup P.L.S. or R.C.E. No. L-7736



COUNTY SURVEYOR'S STATEMENT

This Corner Record was received April 6, 2023

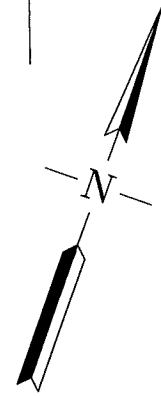
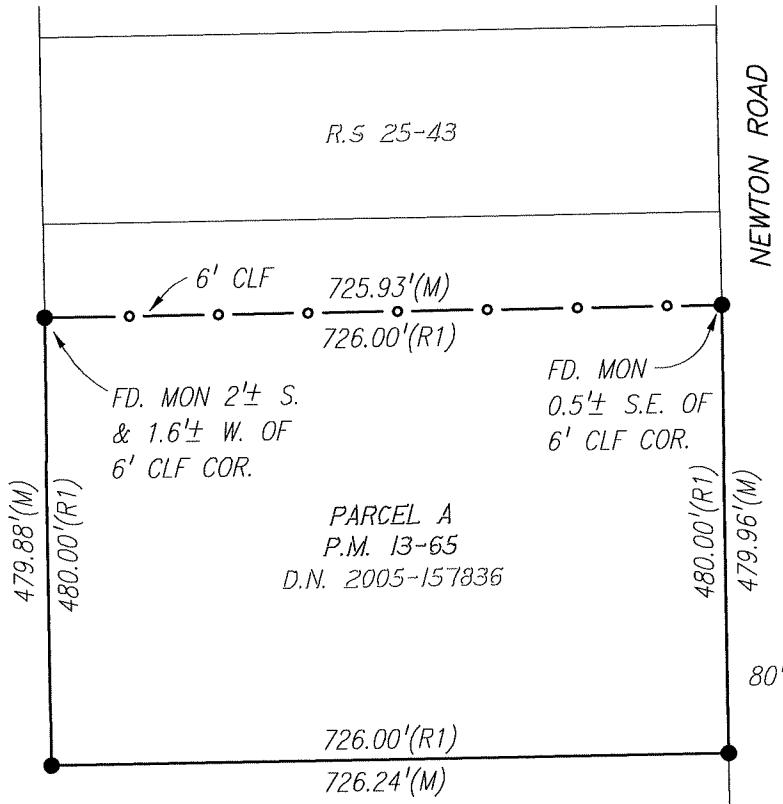
and examined and filed April 14, 2023

Signed James E. Hart P.L.S. or R.C.E. No. 8657

Title County Surveyor

County Surveyor's Comment





SCALE: 1"=200'



0' 100' 200'

BASIS OF BEARINGS:

THE WEST LINE OF NEWTON ROAD PER P.M. 13-65 WHICH BEARS $S17^{\circ}37'00''E$ PER (R1).

REFERENCES:

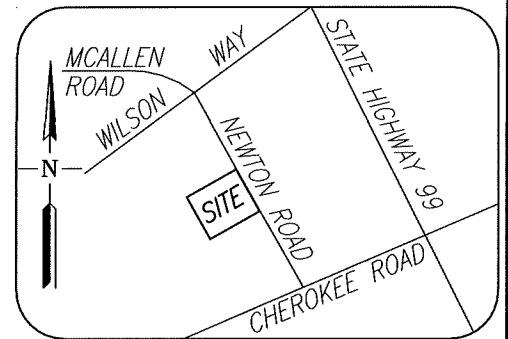
- (R1) P.M. 13-65, S.J.C.R.
- (R2) R.S 25-43, S.J.C.R.

LEGEND:

- FD. FOUND
- MON. MONUMENT
- P.M. PARCEL MAP, BOOK-PAGE, S.J.C.R.
- R.S. RECORD OF SURVEY, BOOK-PAGE, S.J.C.R.
- S.J.C.R. SAN JOAQUIN COUNTY RECORDS
- CLF CHAIN-LINK FENCE
- COR. CORNER
- D.N. DOCUMENT NUMBER, S.J.C.R.

MONUMENTS FOUND:

- FD. 3/4" IRON PIPE PER (R1), NO CAP OR TAG FOUND, DOWN 0.5 1/2.



VICINITY MAP
NO SCALE

Scale: 1"=200'	CORNER RECORD EXHIBIT MAP	Date: 04/06/2023
Job No.: 23-016		DWG: 23016CR-PRE