

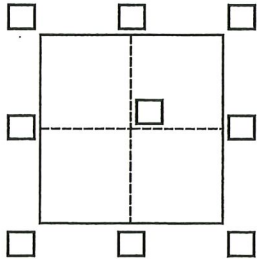
CORNER RECORD

Agency Index CR-23-133

Document Number _____

City of Ripon County of San Joaquin, California

Brief Legal Description Lot 14, Block 5, 5 M&P 25



CORNER TYPE

- Government Corner Control
 Meander Property
 Rancho Other

Date of Survey February 4, 2022

COORDINATES (Optional)

N. _____ E. _____

Elevation _____

Units Metric U.S. Survey Foot

Horizontal Datum _____

Zone _____ Epoch Date _____

Vertical Datum _____

Complies with Public Resources Code §§8801-8819

Complies with Public Resources Code §§8890-8902

PLS Act Ref.: 8765(d) 8771 8773 Other:

Corner/Monument: Left as found Established Rebuilt Pre-Construction

Found and tagged Reestablished Referenced Post-Construction

Narrative of corner identified and monument as found, set, reset, replaced, or removed:

See sheet #2 for description(s):

Found monuments from CR-17-227. Used to establish Lot 14.

SURVEYOR'S STATEMENT

This Corner Record was prepared by me or under my direction in conformance with the Professional Land Surveyors' Act on November 16, 2022 & 4/4/23.

Signed Michael T. Turnrose (P.L.S.) or P.C.E. No. 7454



COUNTY SURVEYOR'S STATEMENT

This Corner Record was received April 6, 2023

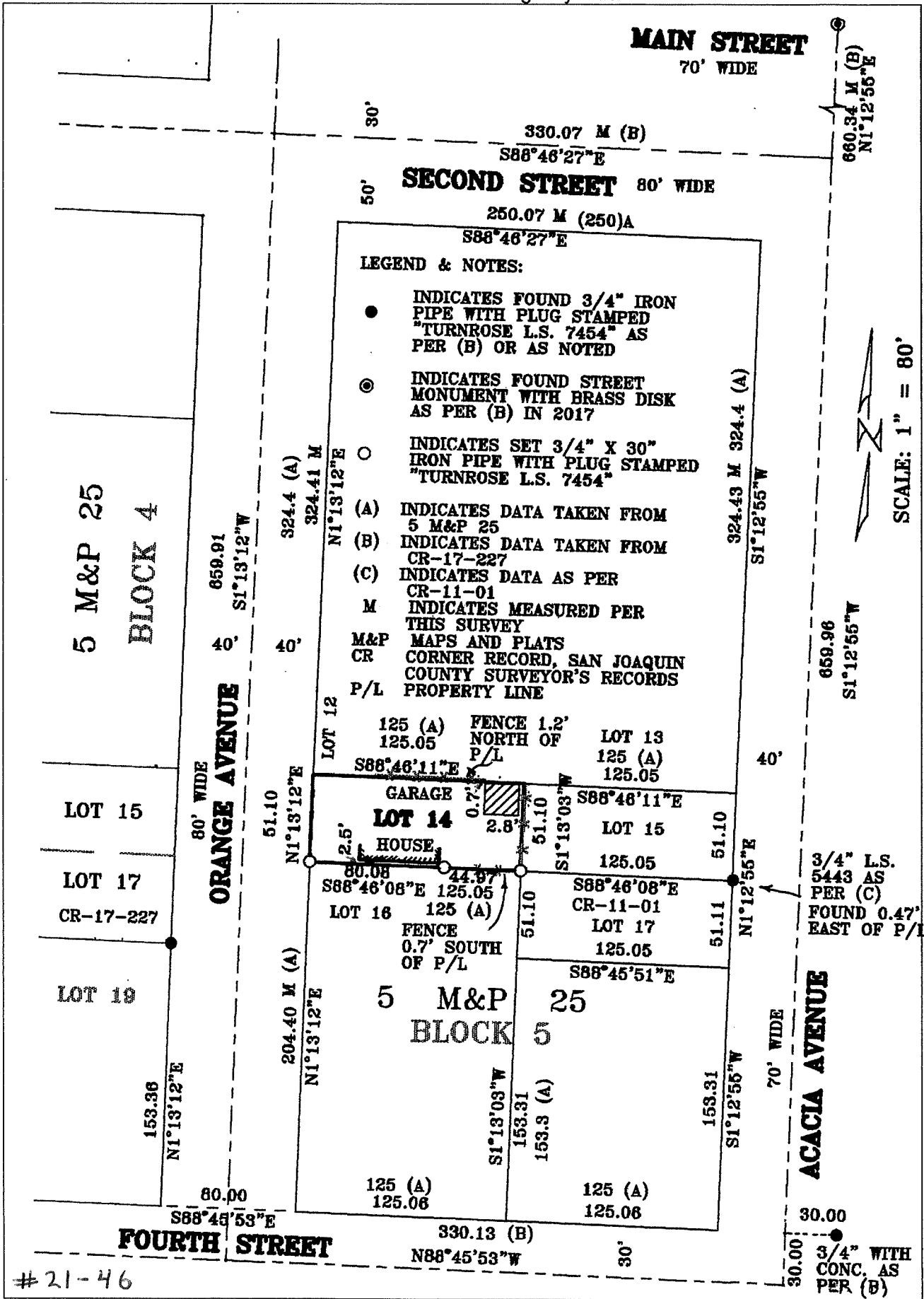
and examined and filed April 14, 2023

Signed James E. Hart P.L.S. or P.C.E. No. 8657

Title County Surveyor

County Surveyor's Comment





21-46