

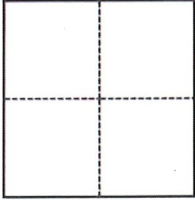
# CORNER RECORD

Agency Index CR-23-131  
Document Number \_\_\_\_\_

City of UNINCORPORATED AREA County of SAN JOAQUIN, California

Brief Legal Description AXLE/COTTON SPINDLE PER BOOK 06 OF RECORD OF SURVEY AT PAGE 63

### CORNER TYPE



- Government Corner
- Meander
- Rancho
- Control
- Property
- Other

Date of Survey 11/03/2022

### COORDINATES (Optional)

N. \_\_\_\_\_ E. \_\_\_\_\_  
 Elevation \_\_\_\_\_  
 Units  Metric  U.S. Survey Foot  
 Horizontal Datum \_\_\_\_\_  
 Zone \_\_\_\_\_ Epoch Date \_\_\_\_\_  
 Vertical Datum \_\_\_\_\_  
 Complies with Public Resources Code §§8801-8819  
 Complies with Public Resources Code §§8890-8902

- PLS Act Ref.:  8765(d)  8771  8773  Other:
- Corner/Monument:  Left as found  Established  Rebuilt  Pre-Construction  
 Found and tagged  Reestablished  Referenced  Post-Construction

Narrative of corner identified and monument as found, set, reset, replaced, or removed:  
 See sheet #2 for description(s):

*FOUND AXLE/COTTON SPINDLE AT THE MOST WESTERLY CORNER OF THE NORTH 5 ACRE LOT PER RECORD OF SURVEYS BOOK 06 AT PAGE 63. SET FOUR (4) REFERENCE POINTS, AS SHOWN ON THE REVERSE, OUTSIDE OF CONSTRUCTION LIMITS.*

### SURVEYOR'S STATEMENT

This Corner Record was prepared by me or under my direction in conformance with  
 the Professional Land Surveyors' Act on MARCH 30, 2023  
 Signed *James N. Landrum* P.L.S. or R.C.E. No. LS 5837

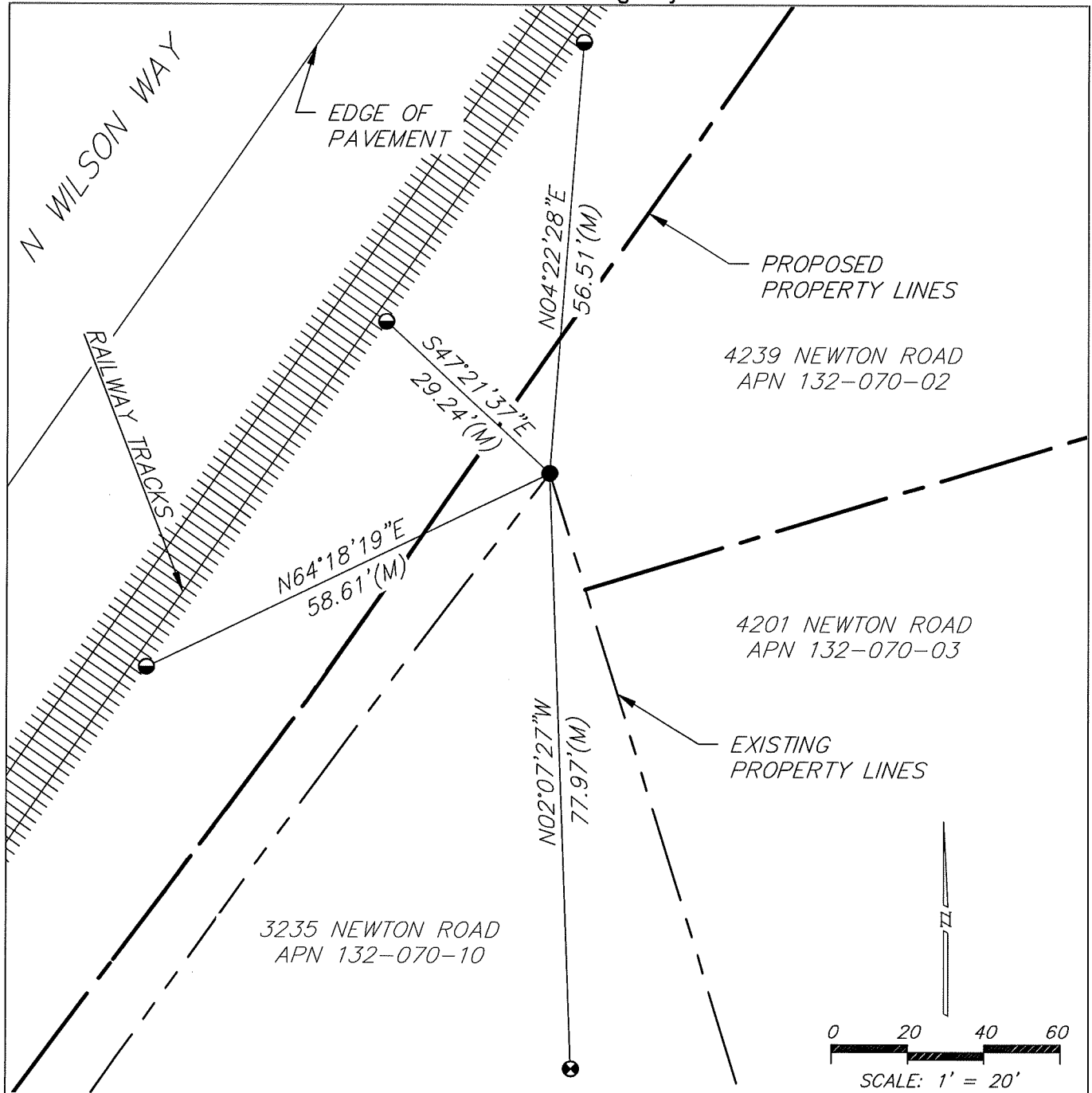


### COUNTY SURVEYOR'S STATEMENT

This Corner Record was received March 31, 2023  
 and examined and filed April 14, 2023  
 Signed *James E. Hart* P.L.S. or R.C.E. No. 8657  
 Title County Surveyor



County Surveyor's Comment



LEGEND

- FOUND AXLE/COTTON SPINDLE
- ◐ SET MAG NAIL UNLESS OTHERWISE SHOWN
- ⊗ SET HUB AND TACK UNLESS OTHERWISE SHOWN
- (M) MEASURED ON THIS SURVEY
- (A) BOOK 06 OF RECORD OF SURVEYS, PAGE 63

NOTES

1. NOTE THAT BEARINGS SHOWN ARE FOR ANGULAR CONTROL FROM LOCAL CONSTRUCTION SURVEY DATA.