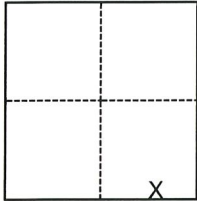


CORNER RECORD

Agency Index

CR-23-127

Document Number

City of Lodi County of San Joaquin, CaliforniaBrief Legal Description Property monument at Turner Road & Yokuts Drive (PM 10-076)**CORNER TYPE****COORDINATES (Optional)**

- ☐ Government Corner ☐ Control
☐ Meander ☒ Property
☐ Rancho ☐ Other

Date of Survey December 13, 2022

N. _____ E. _____

Elevation _____

Units ☐ Metric ☒ U.S. Survey Foot

Horizontal Datum _____

Zone _____ Epoch Date _____

Vertical Datum _____

☐ Complies with Public Resources Code §§8801-8819☐ Complies with Public Resources Code §§8890-8902

Section 36, T.4N., R.6E., M.D.B.&M.

PLS Act Ref.: ☐ 8765(d) ☒ 8771 ☐ 8773 ☐ Other:

Corner/
Monument: ☒ Left as found ☐ Established ☐ Rebuilt ☒ Pre-Construction
☐ Found and tagged ☐ Reestablished ☒ Referenced ☐ Post-Construction

Narrative of corner identified and monument as found, set, reset, replaced, or removed:

☒ See sheet #2 for description(s):

FOUND AND SET MONUMENTS AS SHOWN ON PAGE 2. NO ATTEMPT TO DETERMINE THE
VALIDITY OF THE MONUMENTS OR THEIR PROPER LOCATIONS IN RELATION TO LEGAL
BOUNDARY LINES IN THE AREA WAS MADE.

SURVEYOR'S STATEMENT

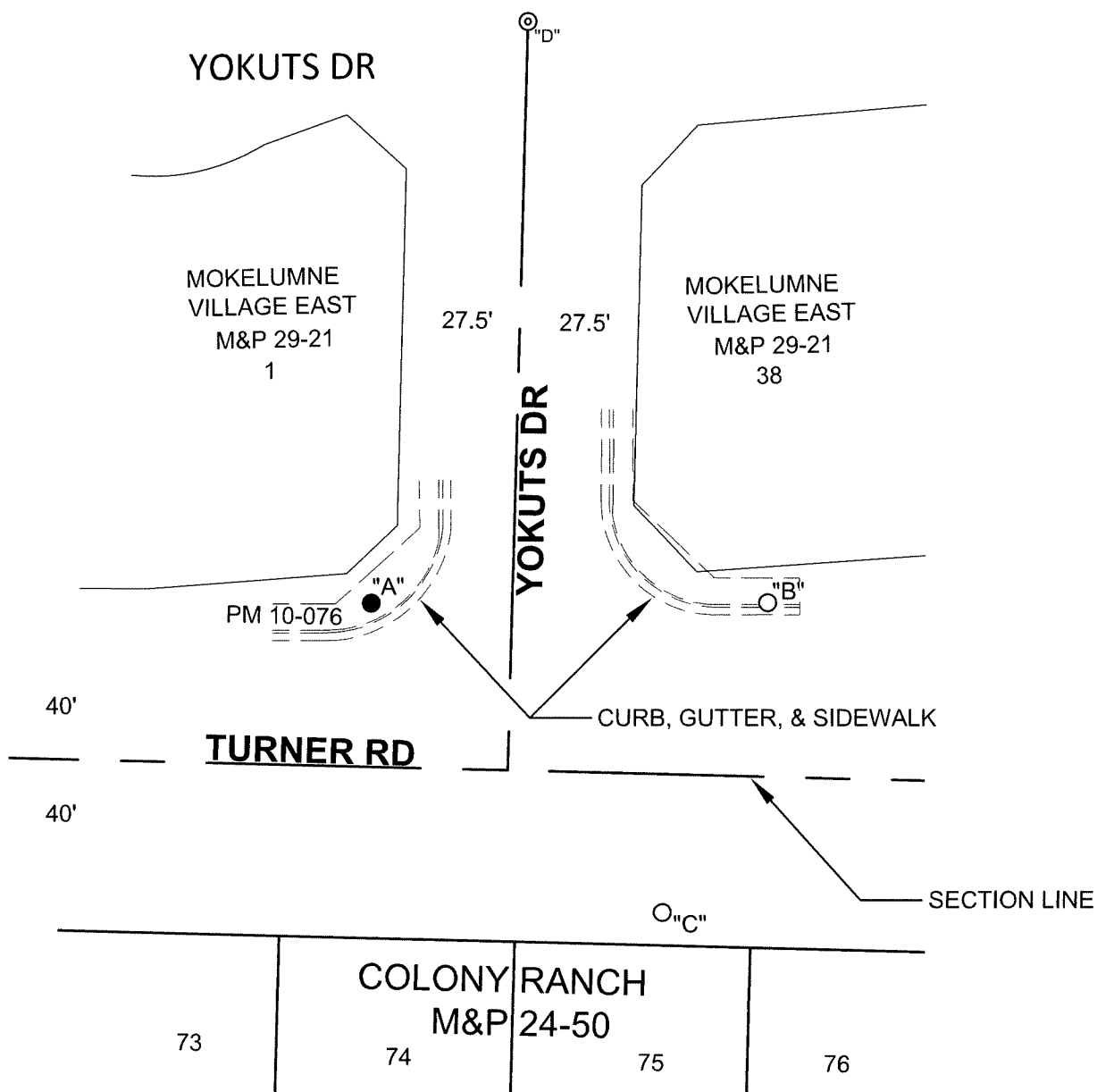
This Corner Record was prepared by me or under my direction in conformance with

the Professional Land Surveyors' Act on 2/13/23Signed [Signature] P.L.S. or R.C.E. No. P.L.S. 9478**COUNTY SURVEYOR'S STATEMENT**This Corner Record was received February 14, 2023and examined and filed April 14, 2023Signed James E. Hart P.L.S. or R.C.E. No. 8657Title County Surveyor

County Surveyor's Comment

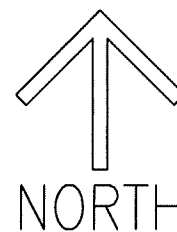


| DISTANCE (M) TABLE | | | | | | | |
|--------------------|--------------------|------|--------|-------|--------|-------|---------|
| FOUND MONUMENT | | FROM | DIST | FROM2 | DIST2 | FROM3 | DIST3 |
| "A" | 3/4" IRON PIN (NT) | "B" | 92.45' | "C" | 99.19' | "D" | 139.87' |



LEGEND

- FOUND MONUMENT PER PM 10-076, AS NOTED, DISTURBED/GROUND FLUSH WITH CONCRETE
- SET NAIL WITH WASHER STAMPED "C.O.L. LS 9478"
- ⊙ FOUND UNTAGGED 3/4" IRON PIN IN MONUMENT BOX PER M&P 29-21
- M&P MAPS & PLATS, VOLUME & PAGE, SAN JOAQUIN COUNTY RECORDS
- PM PARCEL MAP, BOOK & PAGE, SAN JOAQUIN COUNTY RECORDS
- DIST DISTANCE
- (M) MEASURED ON THIS SURVEY
- (NT) NO TAG



SCALE: 1"=40'
22X001.DWG