

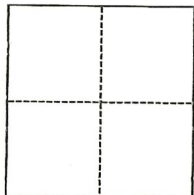
CORNER RECORD

Agency Index CR-23-125
Document Number _____

City of STOCKTON County of SAN JOAQUIN, California
Brief Legal Description INTERSECTION OF FREMONT STREET & MADISON STREET

CORNER TYPE

COORDINATES (Optional)



- Government Corner
- Meander
- Rancho
- Control
- Property
- Other

Date of Survey February 12, 2023

N. _____ E. _____
 Elevation _____
 Units Metric U.S. Survey Foot
 Horizontal Datum _____
 Zone _____ Epoch Date _____
 Vertical Datum _____
 Complies with Public Resources Code §§8801-8819
 Complies with Public Resources Code §§8890-8902

- PLS Act Ref.: 8765(d) 8771 8773 Other: _____
- Corner/Monument: Left as found Established Rebuilt Pre-Construction
 Found and tagged Reestablished Referenced Post-Construction

Narrative of corner identified and monument as found, set, reset, replaced, or removed:

See sheet #2 for description(s):

SEE PAGE 2 OF 2 FOR EXHIBIT MAP SHOWING MONUMENTS FOUND.

SURVEYOR'S STATEMENT

This Corner Record was prepared by me or under my direction in conformance with

the Professional Land Surveyors' Act on February 21, 2023

Signed Walter John Shoup P.L.S. or R.C.E. No. L-7736



COUNTY SURVEYOR'S STATEMENT

This Corner Record was received March 7, 2023

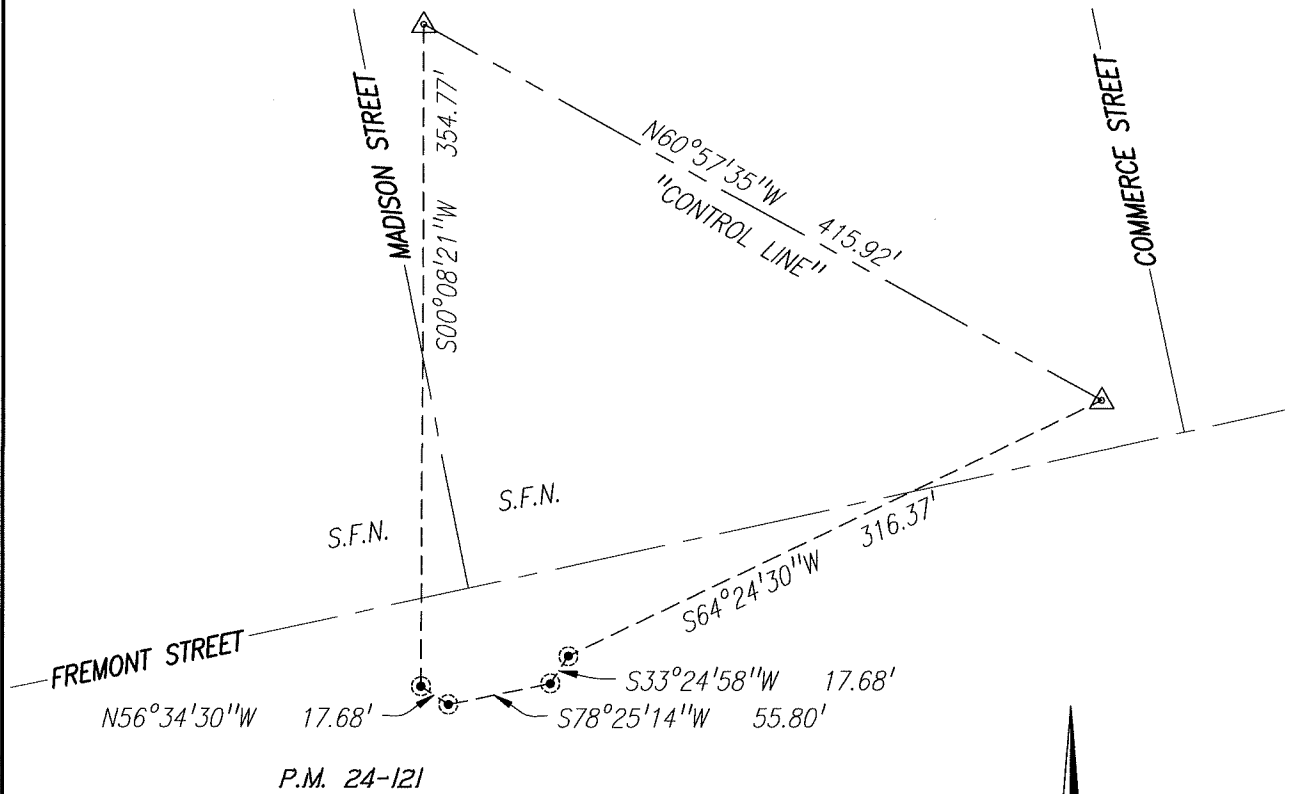
and examined and filed April 6, 2023

Signed James E. Hart P.L.S. or R.C.E. No. 8657

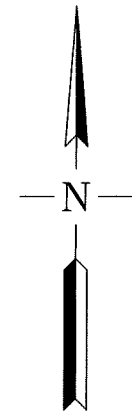
Title County Surveyor

County Surveyor's Comment

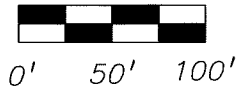




P.M. 24-121



SCALE: 1"=100'



REFERENCE:

(R1) P.M. 24-121, S.J.C.R.

LEGEND:

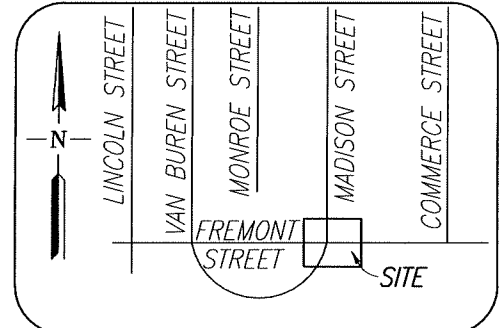
- FD. FOUND
- MON. MONUMENT
- P.M. PARCEL MAP, BOOK-PAGE, S.J.C.R.
- S.J.C.R. SAN JOAQUIN COUNTY RECORDS
- S.F.N. SEARCHED, FOUND NOTHING

MONUMENTS FOUND:

- FD. BRASS DISK STAMPED "LS 8092" PER (R1).
- △— SET MAG & WASHER STAMPED "SLS CONTROL-PLS 7736"

NOTE:

"NO ATTEMPT WAS MADE TO VERIFY THE MONUMENT(S)".



VICINITY MAP
NO SCALE

Scale: 1"=100'	CORNER RECORD EXHIBIT MAP	Date: 03/03/2023
Job No.: 23-010		DWG: 23010CR-PRE