

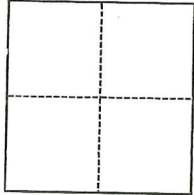
CORNER RECORD

Agency Index CR-23-124
Document Number _____

City of STOCKTON County of SAN JOAQUIN, California
Brief Legal Description INTERSECTION OF PARK STREET & MADISON STREET

CORNER TYPE

COORDINATES (Optional)



- Government Corner
- Meander
- Rancho
- Control
- Property
- Other

Date of Survey February 12, 2023

N. _____ E. _____
 Elevation _____
 Units Metric U.S. Survey Foot
 Horizontal Datum _____
 Zone _____ Epoch Date _____
 Vertical Datum _____
 Complies with Public Resources Code §§8801-8819
 Complies with Public Resources Code §§8890-8902

- PLS Act Ref.: 8765(d) 8771 8773 Other: _____
- Corner/Monument: Left as found Established Rebuilt Pre-Construction
 Found and tagged Reestablished Referenced Post-Construction

Narrative of corner identified and monument as found, set, reset, replaced, or removed:
 See sheet #2 for description(s):

SEE PAGE 2 OF 2 FOR EXHIBIT MAP SHOWING MONUMENTS FOUND.

SURVEYOR'S STATEMENT

This Corner Record was prepared by me or under my direction in conformance with
 the Professional Land Surveyors' Act on February 21, 2023
 Signed Walter John Shoup P.L.S. or R.C.E. No. L-7736

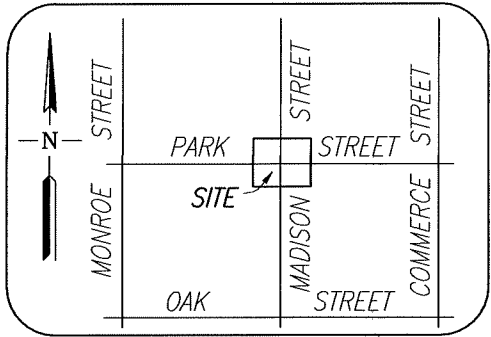
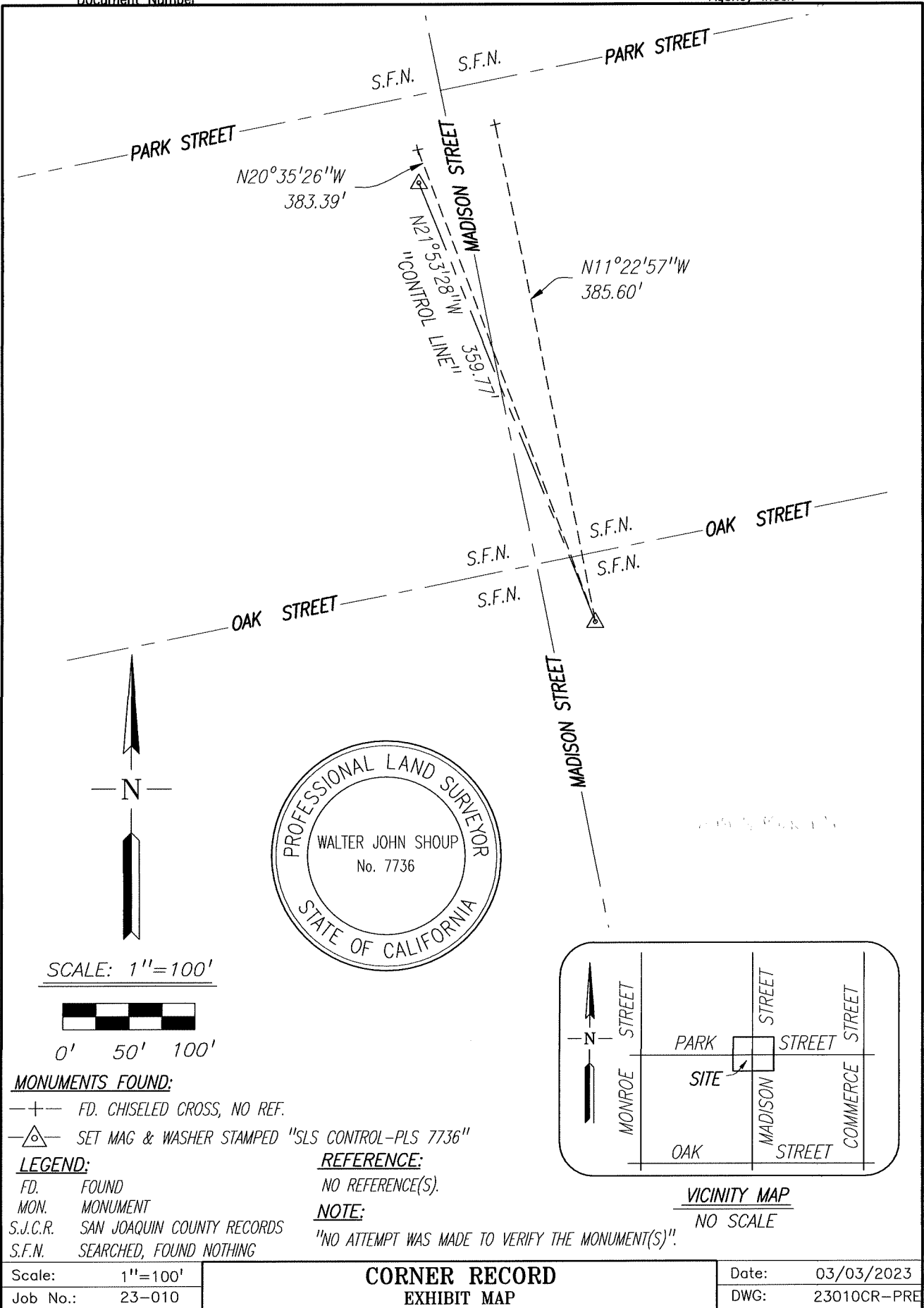


COUNTY SURVEYOR'S STATEMENT

This Corner Record was received March 7, 2023
 and examined and filed April 6, 2023
 Signed James E. Hart P.L.S. or R.C.E. No. 8657
 Title County Surveyor



County Surveyor's Comment



VICINITY MAP
NO SCALE

MONUMENTS FOUND:

- + - FD. CHISELED CROSS, NO REF.
- △ - SET MAG & WASHER STAMPED "SLS CONTROL-PLS 7736"

LEGEND:

- FD. FOUND
- MON. MONUMENT
- S.J.C.R. SAN JOAQUIN COUNTY RECORDS
- S.F.N. SEARCHED, FOUND NOTHING

REFERENCE:

NO REFERENCE(S).

NOTE:

"NO ATTEMPT WAS MADE TO VERIFY THE MONUMENT(S)".

Scale:	1"=100'
Job No.:	23-010

**CORNER RECORD
EXHIBIT MAP**

Date:	03/03/2023
DWG:	23010CR-PRE