

CORNER RECORD

Agency Index CR-23-123

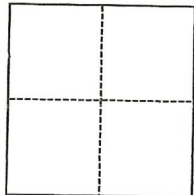
Document Number _____

City of STOCKTON County of SAN JOAQUIN, California

Brief Legal Description INTERSECTION OF HARDING WAY & MADISON STREET

CORNER TYPE

COORDINATES (Optional)



- Government Corner
- Meander
- Rancho
- Control
- Property
- Other

Date of Survey February 12, 2023

N. _____ E. _____

Elevation _____

Units Metric U.S. Survey Foot

Horizontal Datum _____

Zone _____ Epoch Date _____

Vertical Datum _____

Complies with Public Resources Code §§8801-8819

Complies with Public Resources Code §§8890-8902

PLS Act Ref.: 8765(d) 8771 8773 Other:

Corner/Monument: Left as found Established Rebuilt Pre-Construction

Found and tagged Reestablished Referenced Post-Construction

Narrative of corner identified and monument as found, set, reset, replaced, or removed:

See sheet #2 for description(s):

SEE PAGE 2 OF 2 FOR EXHIBIT MAP SHOWING MONUMENTS FOUND.

SURVEYOR'S STATEMENT

This Corner Record was prepared by me or under my direction in conformance with

the Professional Land Surveyors' Act on February 21, 2023

Signed Walter John Shoup P.L.S. or R.C.E. No. L-7736



COUNTY SURVEYOR'S STATEMENT

This Corner Record was received March 7, 2023

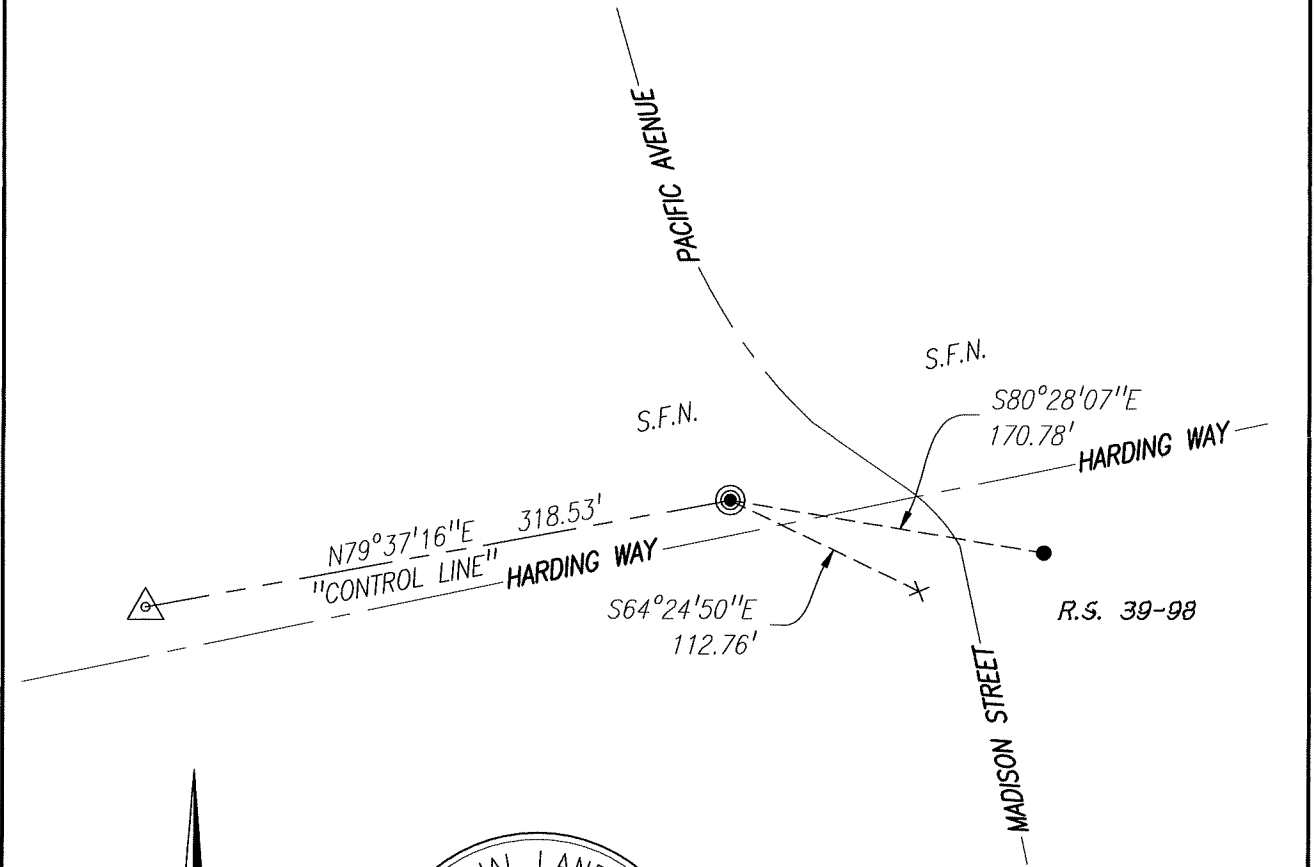
and examined and filed April 6, 2023

Signed James E. Hart P.L.S. or R.C.E. No. 8657

Title County Surveyor

County Surveyor's Comment

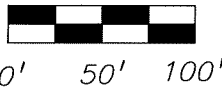




REFERENCE:
 (R1) R.S. 39-98, S.J.C.R.

LEGEND:
 F.D. FOUND
 MON. MONUMENT
 R.S. RECORD OF SURVEY, BOOK-PAGE, S.J.C.R.
 S.J.C.R. SAN JOAQUIN COUNTY RECORDS
 S.F.N. SEARCHED, FOUND NOTHING

SCALE: 1"=100'

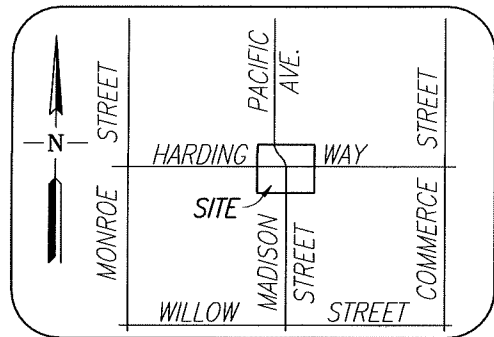


MONUMENTS FOUND:

- F.D. C.O.S. MON #24, BRASS DISK STAMPED "2S-2" IN MON WELL PER (R1).
- F.D. NAIL AND BRASS TAG STAMPED "LS 7126" PER (R1).
- +— F.D. CHISELED CROSS PER (R1).
- △— SET MAG & WASHER STAMPED "SLS CONTROL-PLS 7736"

NOTE:

"NO ATTEMPT WAS MADE TO VERIFY THE MONUMENT(S)".



VICINITY MAP
 NO SCALE

Scale: 1"=100'	CORNER RECORD EXHIBIT MAP	Date: 03/03/2023
Job No.: 23-010		DWG: 23010CR-PRE