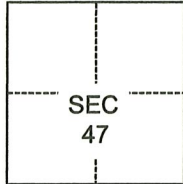


CORNER RECORD

Agency Index CR-23-122

Document Number _____

City of _____ County of SAN JOAQUIN, CaliforniaBrief Legal Description FOUND MONUMENT AT THE NORTH EAST CORNER OF CARPENTER ROAD AND POCK LANE.**CORNER TYPE****COORDINATES (Optional)**

- Government Corner Control
 Meander Property
 Rancho Other

N. _____ E. _____

Elevation _____

Units Metric U.S. Survey Foot

Horizontal Datum _____

Zone _____ Epoch Date _____

Vertical Datum _____

 Complies with Public Resources Code §§8801-8819 Complies with Public Resources Code §§8890-8902C.M. WEBER
GRANTDate of Survey September 28, 2021

PLS Act Ref.:

 8765(d) 8771 8773 Other:Corner/
Monument: Left as found Established Rebuilt Pre-Construction Found and tagged Reestablished Referenced Post-Construction

Narrative of corner identified and monument as found, set, reset, replaced, or removed:

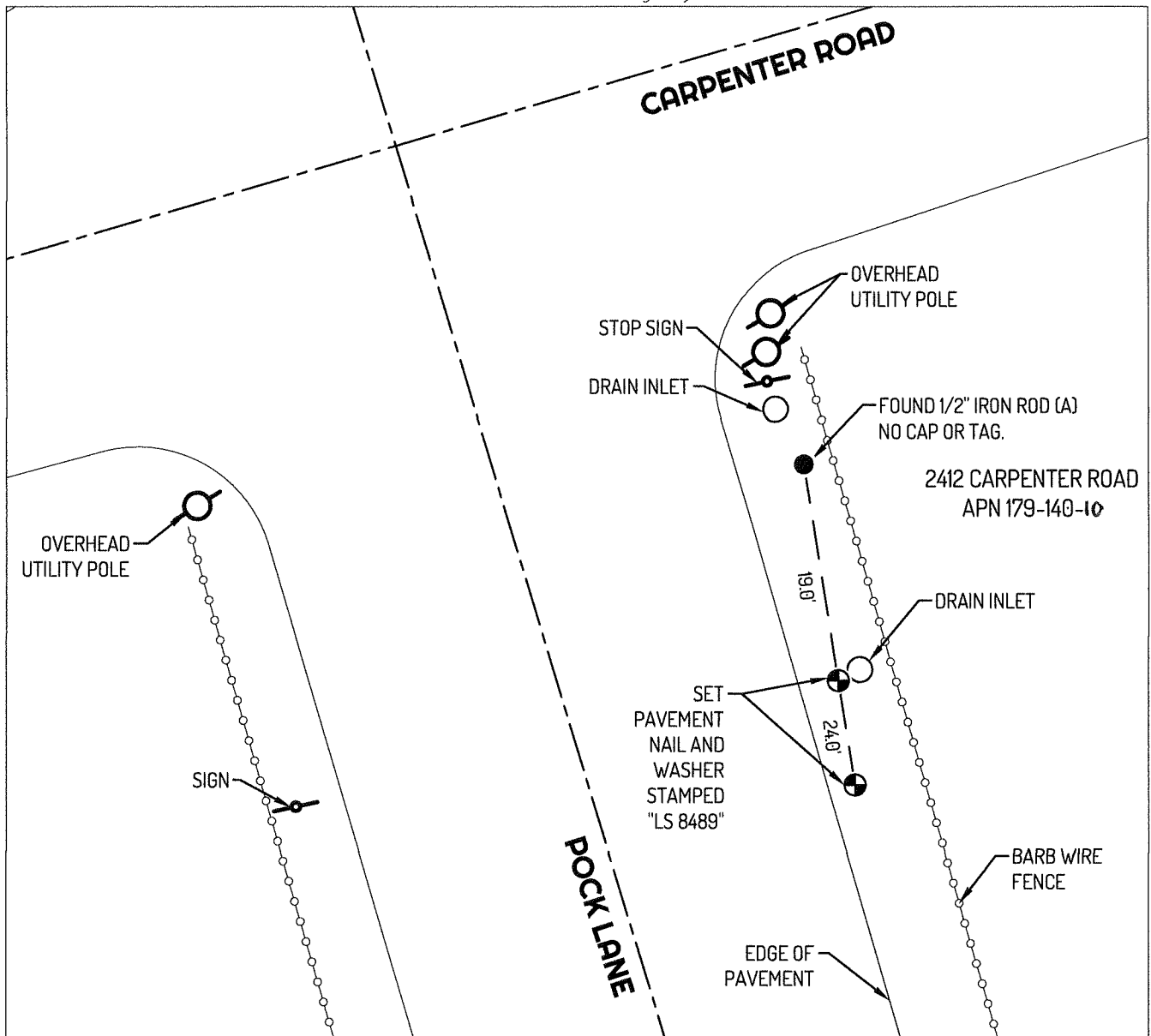
 See sheet #2 for description(s):**SURVEYOR'S STATEMENT**

This Corner Record was prepared by me or under my direction in conformance with

the Professional Land Surveyors' Act on January 25, 2023Signed Scott L. BlakeP.L.S. or R.C.E. No. 8489**COUNTY SURVEYOR'S STATEMENT**This Corner Record was received February 27, 2023and examined and filed March 29, 2023Signed James E. HartP.L.S. or R.C.E. No. 8657Title County Surveyor

County Surveyor's Comment





LEGEND

- FOUND 1/2" IRON ROD (A) NO CAP OR TAG
- ⊕— SET CONTROL POINT
- 955 REFERENCE STREET ADDRESS
- APN ASSESSOR'S PARCEL NUMBER

LINETYPES

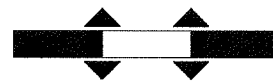
- CENTERLINE
- o-o-o- BARB WIRE FENCE
- EDGE OF PAVEMENT
- - - - TIE LINE

REFERENCE

- (A) MONUMENT NOT OF RECORD.



NORTH



SCALE

NOT TO SCALE