

CORNER RECORD

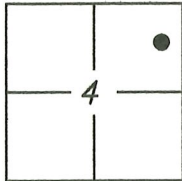
Agency Index CR-23-121

Document Number _____

City of STOCKTON

County of SAN JOAQUIN, California

Brief Legal Description FOUND IRON PIPE NEAR APN 102-250-03 S.J.C.R. ON THE CORNER OF TAMWORTH WAY AND BANBURY DRIVE PER MAPS AND PLATS, BOOK 14, PAGE 103, S.J.C.R.



C.M. WEBER
GRANT

CORNER TYPE

Government Corner Control
 Meander Property
 Rancho Other

Date of Survey 2022/02/06

COORDINATES (Optional)

N. _____ E. _____

Elevation _____

Units Metric U.S. Survey Foot

Horizontal Datum _____

Zone _____ Epoch Date _____

Vertical Datum: _____

Complies with Public Resources Code §§8801-8819

Complies with Public Resources Code §§8890-8902

PLS Act Ref.: 8765(d) 8771 8773

Other: _____

Corner/Monument: Left as found Established Rebuilt Pre-Construction
 Found and tagged Reestablished Referenced Post-Construction

Narrative of corner identified and monument as found and set or reset:

See sheet #2 for description(s):

SURVEYOR'S STATEMENT

This Corner Record was prepared by me or under my direction in conformance with the Professional Land Surveyor's Act on 11 APRIL, 2022.

Signed Jale B. [Signature] P.L.S. or R.C.E. No.: 8489



COUNTY SURVEYOR'S STATEMENT

This Corner Record was received August 12, 2022

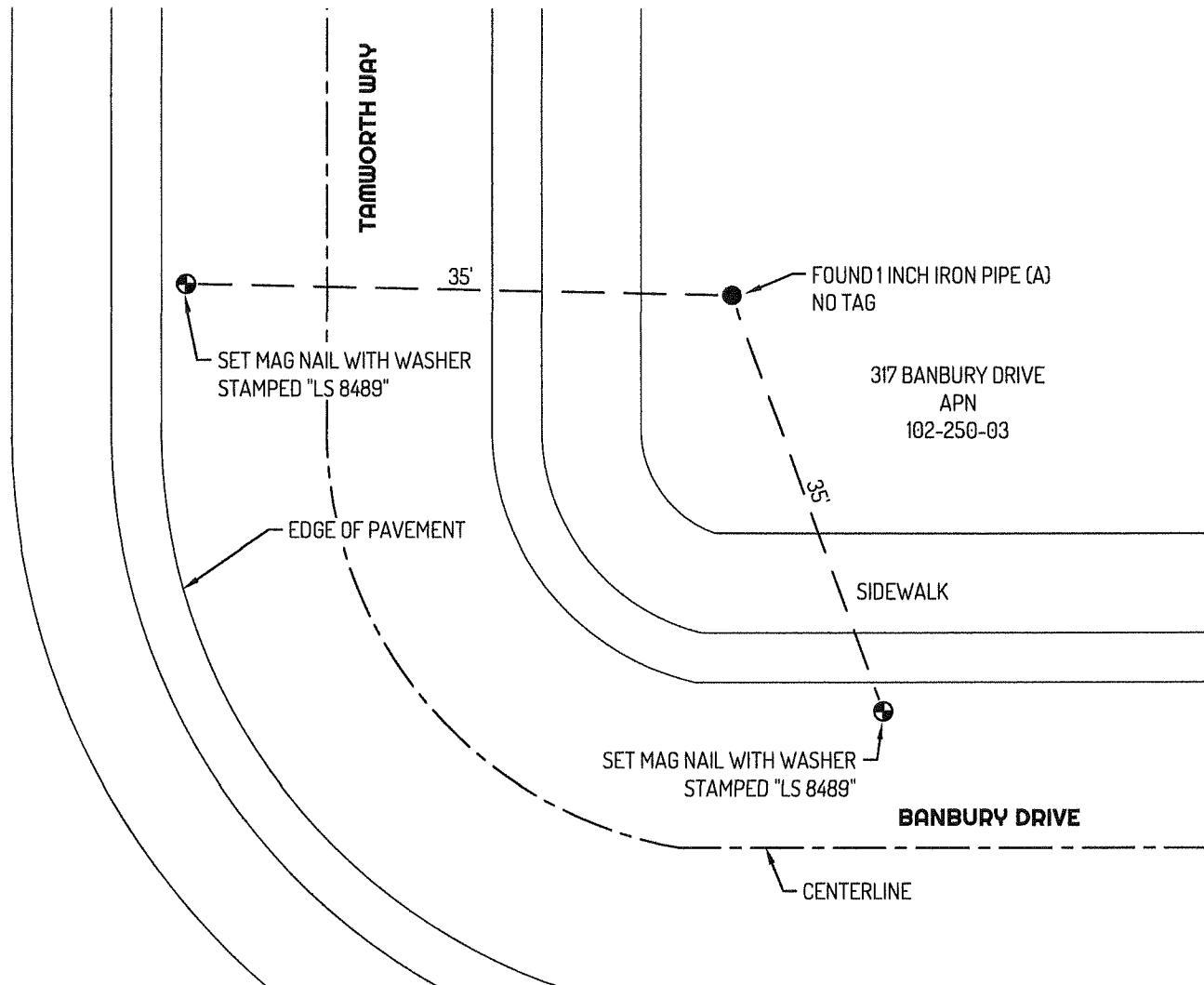
and examined and filed September 1, 2022

Signed James E. Hart P.L.S. or R.C.E. No.: 8657

Title County Surveyor

County Surveyor's Comment





LEGEND

- FOUND MONUMENT AS NOTED
- ⊕— SET CONTROL POINT
- 435 REFERENCE STREET ADDRESS
- APN ASSESSOR'S PARCEL NUMBER
- TIE LINE
- LOT LINE

REFERENCES

(A) 14-MP-103

