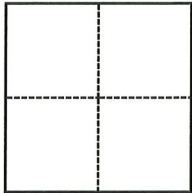


# CORNER RECORD

Agency Index

CR-23-114

Document Number

City of Lathrop County of San Joaquin, CaliforniaBrief Legal Description J St & Ruby Ct, NW 1/4, Section 26, T.1S., R.6E., M.D.B.& M.**CORNER TYPE****COORDINATES (Optional)**

- ☐ Government Corner ☐ Control  
☐ Meander ☐ Property  
☐ Rancho ☒ Other

Date of Survey December 7, 2022

N. \_\_\_\_\_ E. \_\_\_\_\_

Elevation \_\_\_\_\_

Units ☐ Metric ☒ U.S. Survey Foot

Horizontal Datum \_\_\_\_\_

Zone \_\_\_\_\_ Epoch Date \_\_\_\_\_

Vertical Datum \_\_\_\_\_

☐ Complies with Public Resources Code §§8801-8819☐ Complies with Public Resources Code §§8890-8902

PLS Act Ref.:

☐ 8765(d)☒ 8771☐ 8773☐ Other:Corner/  
Monument:☒ Left as found☐ Established☐ Rebuilt☐ Pre-Construction☐ Found and tagged☐ Reestablished☒ Referenced☒ Post-Construction

Narrative of corner identified and monument as found, set, reset, replaced, or removed:

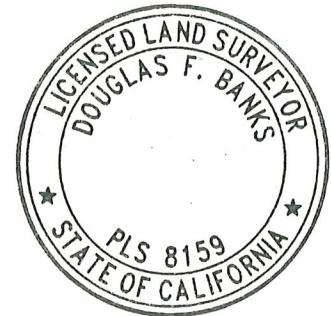
☒ See sheet #2 for description(s):**SURVEYOR'S STATEMENT**

This Corner Record was prepared by me or under my direction in conformance with

the Professional Land Surveyors' Act on January 26, 2023

Signed

P.L.S. or R.C.E. No.

8159**COUNTY SURVEYOR'S STATEMENT**

This Corner Record was received

March 23, 2023

and examined and filed

March 30, 2023

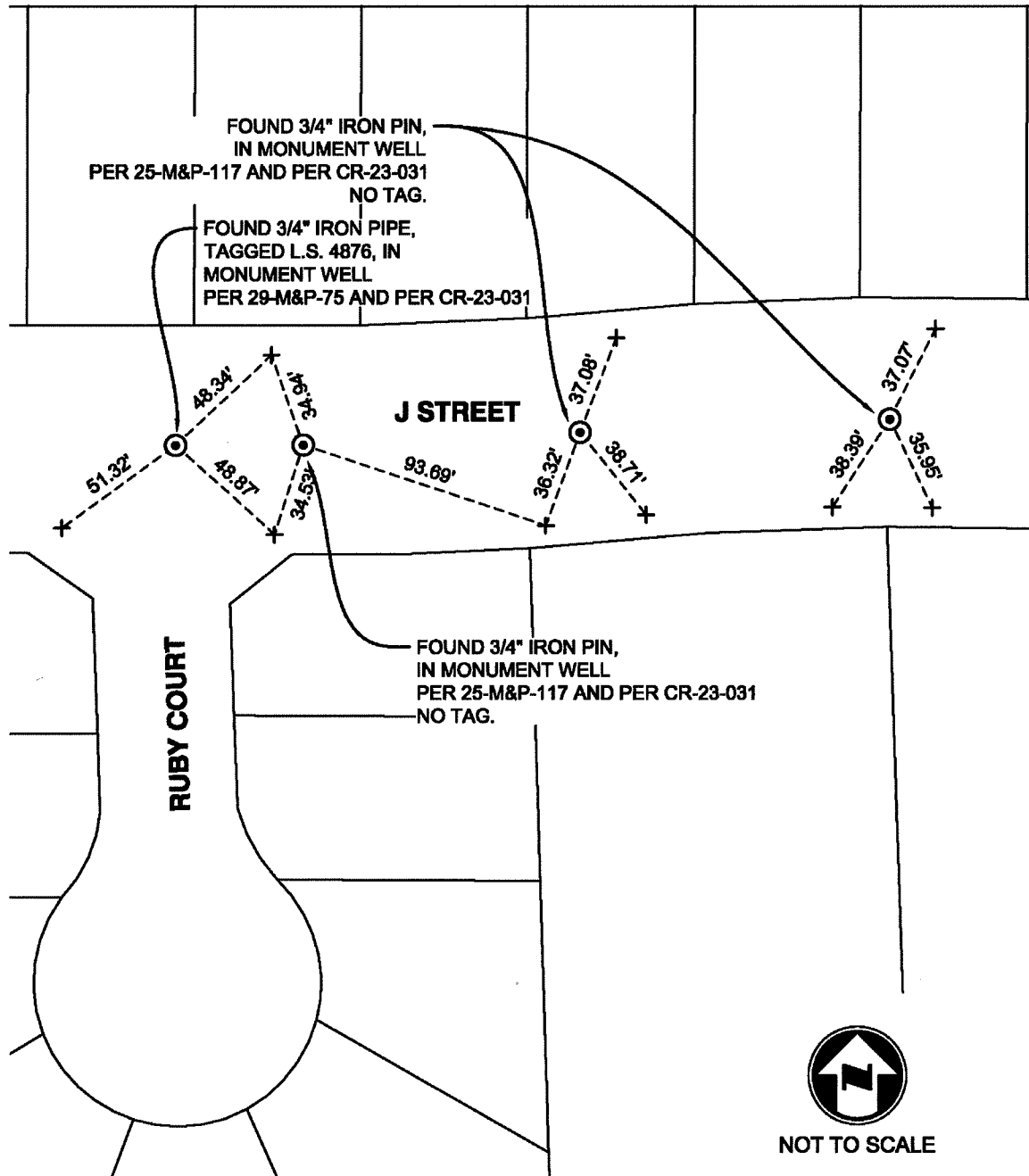
Signed

P.L.S. or R.C.E. No.

8657

Title

County Surveyor**County Surveyor's Comment**

**NOTES:**

- ⊙ FOUND MONUMENT AS NOTED.
- + FOUND SAW CUT "+" IN CONCRETE ON TOP OF CURB, CR-23-031
- M&P- BOOK, PAGE, MAPS AND PLATS, SAN JOAQUIN COUNTY RECORDS
- CR- CORNER RECORD, SAN JOAQUIN COUNTY SURVEYOR'S RECORDS