

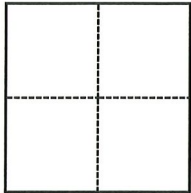
CORNER RECORD

Agency Index CR-23-112
Document Number _____

City of Lathrop County of San Joaquin, California
Brief Legal Description J St & Lottie Wy, Section 26, T.1S., R.6E., M.D.B.& M.

CORNER TYPE

COORDINATES (Optional)



- Government Corner
- Meander
- Rancho
- Control
- Property
- Other

Date of Survey December 7, 2022

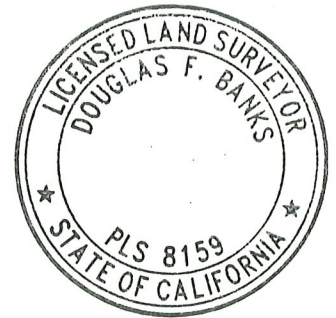
N. _____ E. _____
 Elevation _____
 Units Metric U.S. Survey Foot
 Horizontal Datum _____
 Zone _____ Epoch Date _____
 Vertical Datum _____
 Complies with Public Resources Code §§8801-8819
 Complies with Public Resources Code §§8890-8902

- PLS Act Ref.: 8765(d) 8771 8773 Other:
- Corner/Monument: Left as found Established Rebuilt Pre-Construction
 Found and tagged Reestablished Referenced Post-Construction

Narrative of corner identified and monument as found, set, reset, replaced, or removed:
 See sheet #2 for description(s):

SURVEYOR'S STATEMENT

This Corner Record was prepared by me or under my direction in conformance with
 the Professional Land Surveyors' Act on January 26, 2023
 Signed Douglas F. Banks P.L.S. or R.C.E. No. 8159

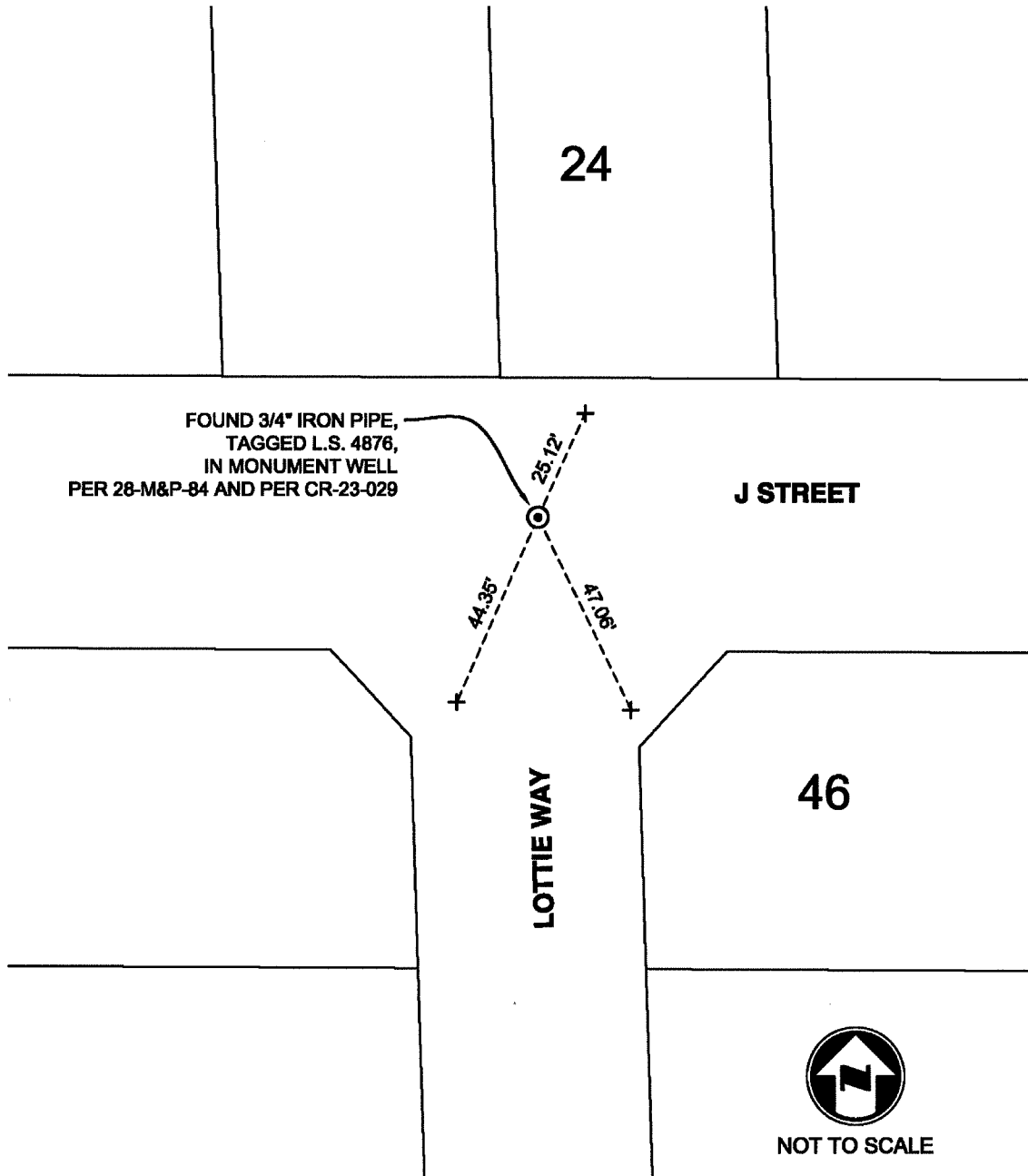


COUNTY SURVEYOR'S STATEMENT

This Corner Record was received March 23, 2023
 and examined and filed March 30, 2023
 Signed James E. Hart P.L.S. or R.C.E. No. 8657
 Title County Surveyor



County Surveyor's Comment



NOTES:

- ⊙ FOUND MONUMENT AS NOTED.
- + FOUND SAW CUT "+" IN CONCRETE ON TOP OF CURB, PER CR-23-029
- M&P- BOOK, PAGE, MAPS AND PLATS, SAN JOAQUIN COUNTY RECORDS
- CR- CORNER RECORD, SAN JOAQUIN COUNTY SURVEYOR'S RECORDS