

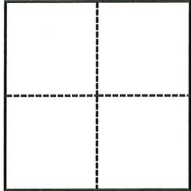
# CORNER RECORD

Agency Index CR-23-109  
Document Number \_\_\_\_\_

City of Lathrop County of San Joaquin, California  
Brief Legal Description J St approx 389' east of Lottie Wy, Section 26, T.1S., R.6E., M.D.B.& M.

### CORNER TYPE

### COORDINATES (Optional)



- Government Corner
- Meander
- Rancho
- Control
- Property
- Other

Date of Survey December 7, 2022

N. \_\_\_\_\_ E. \_\_\_\_\_  
 Elevation \_\_\_\_\_  
 Units  Metric  U.S. Survey Foot  
 Horizontal Datum \_\_\_\_\_  
 Zone \_\_\_\_\_ Epoch Date \_\_\_\_\_  
 Vertical Datum \_\_\_\_\_  
 Complies with Public Resources Code §§8801-8819  
 Complies with Public Resources Code §§8890-8902

PLS Act Ref.:  8765(d)  8771  8773  Other:  
 Corner/Monument:  Left as found  Established  Rebuilt  Pre-Construction  
 Found and tagged  Reestablished  Referenced  Post-Construction

Narrative of corner identified and monument as found, set, reset, replaced, or removed:  
 See sheet #2 for description(s):

### SURVEYOR'S STATEMENT

This Corner Record was prepared by me or under my direction in conformance with  
the Professional Land Surveyors' Act on January 26, 2023

Signed Douglas F. Banks P.L.S. or R.C.E. No. 8159



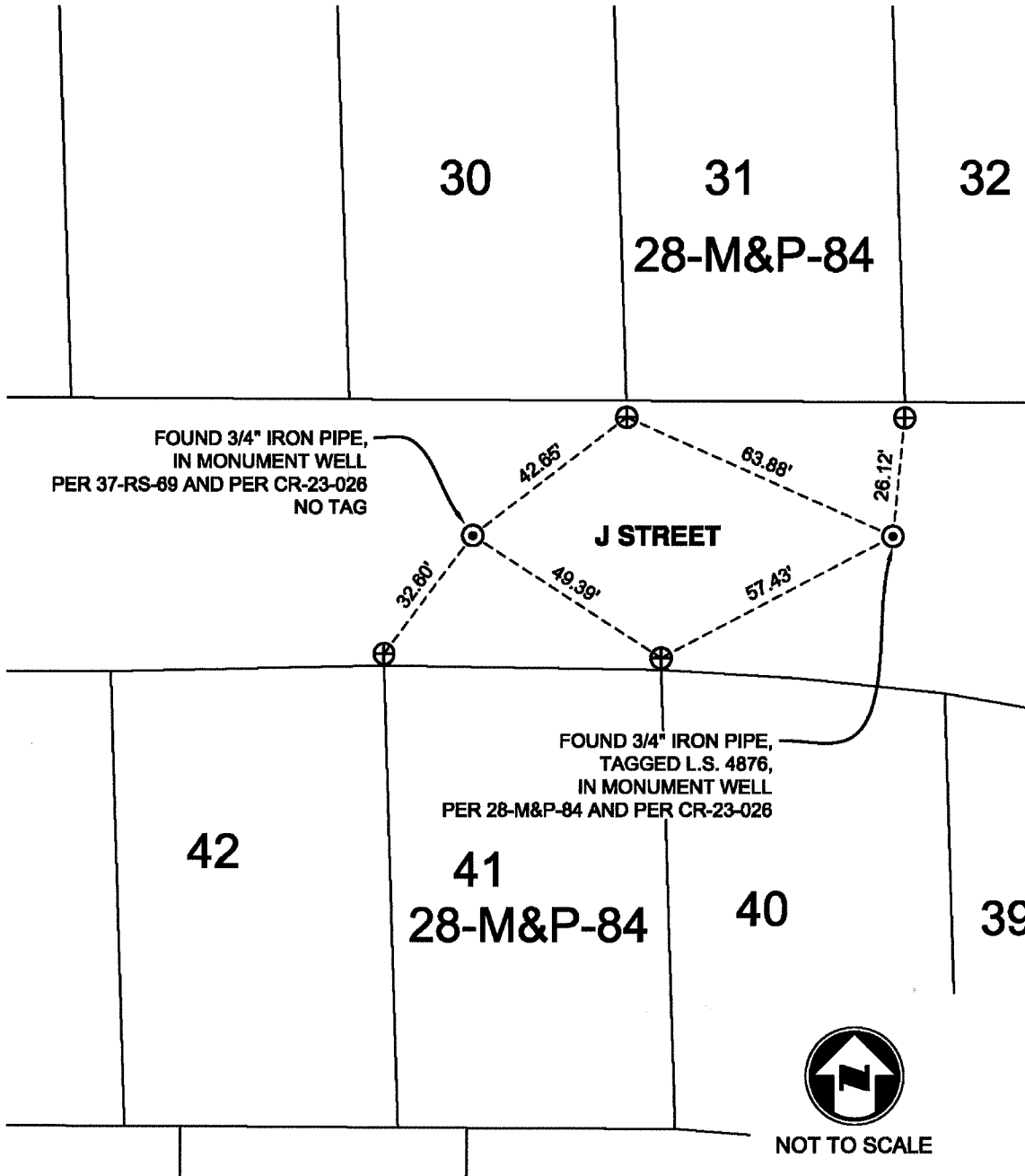
### COUNTY SURVEYOR'S STATEMENT

This Corner Record was received March 23, 2023  
and examined and filed March 30, 2023

Signed James E. Hart P.L.S. or R.C.E. No. 8657  
Title County Surveyor

County Surveyor's Comment





**NOTES:**

- ⊙ FOUND MONUMENT AS NOTED.
- ⊕ FOUND SAW CUT "+" IN CONCRETE ON SIDEWALK, AS PER 28-M&P-84.
- M&P- BOOK, PAGE, MAPS AND PLATS, SAN JOAQUIN COUNTY RECORDS
- RS- BOOK, PAGE, RECORD OF SURVEY, SAN JOAQUIN COUNTY RECORDS
- CR- CORNER RECORD, SAN JOAQUIN COUNTY SURVEYOR'S RECORDS