

CORNER RECORD

Agency Index

CR-23-107

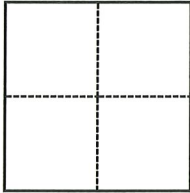
Document Number

City of Lathrop County of San Joaquin, California

Brief Legal Description Prairie Dunes St east of Pine Valley Dr, Section 23, T.1S., R.6E., M.D.B.& M.

CORNER TYPE

COORDINATES (Optional)



- Government Corner
- Meander
- Rancho
- Control
- Property
- Other

Date of Survey December 7, 2022

N. _____ E. _____

Elevation _____

Units Metric U.S. Survey Foot

Horizontal Datum _____

Zone _____ Epoch Date _____

Vertical Datum _____

Complies with Public Resources Code §§8801-8819

Complies with Public Resources Code §§8890-8902

PLS Act Ref.:

8765(d)

8771

8773

Other:

Corner/
Monument:

Left as found

Established

Rebuilt

Pre-Construction

Found and tagged

Reestablished

Referenced

Post-Construction

Narrative of corner identified and monument as found, set, reset, replaced, or removed:

See sheet #2 for description(s):

SURVEYOR'S STATEMENT

This Corner Record was prepared by me or under my direction in conformance with

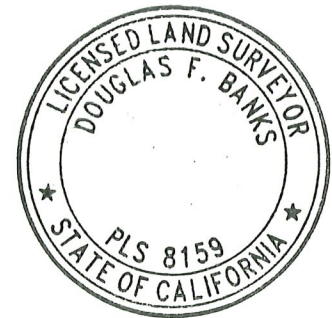
the Professional Land Surveyors' Act on January 26, 2023

Signed

Douglas F. Banks

P.L.S. or R.C.E. No.

8159



COUNTY SURVEYOR'S STATEMENT

This Corner Record was received

March 23, 2023

and examined and filed

March 30, 2023

Signed

James E. Hart

P.L.S. or R.C.E. No.

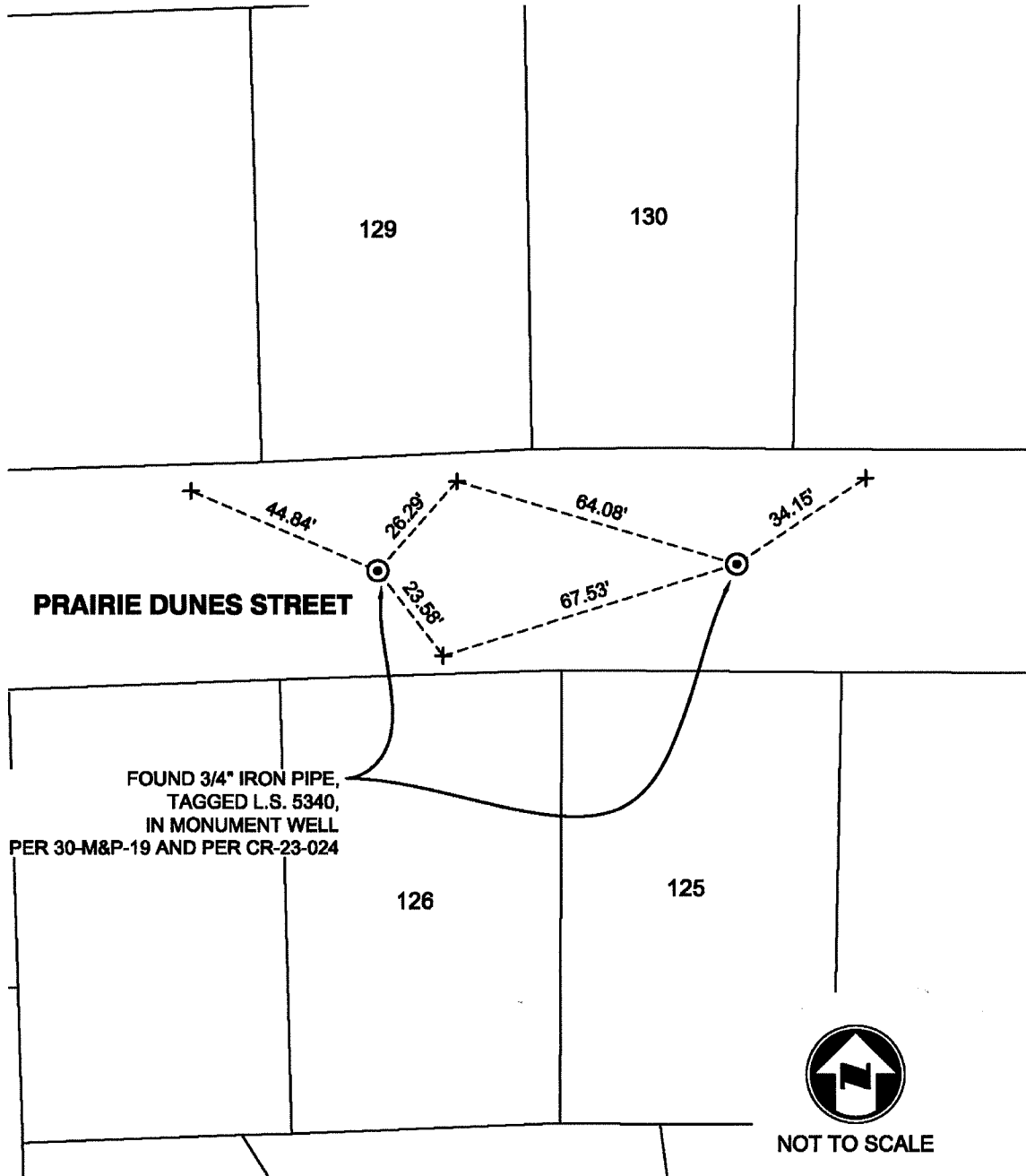
8657

Title

County Surveyor

County Surveyor's Comment





NOTES:

- ⊙ FOUND MONUMENT AS NOTED.
- + FOUND SAW CUT "+" IN CONCRETE ON TOP OF CURB, PER CR-23-024
- M&P- BOOK, PAGE, MAPS AND PLATS, SAN JOAQUIN COUNTY RECORDS
- CR- CORNER RECORD, SAN JOAQUIN COUNTY SURVEYOR'S RECORDS