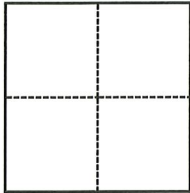


CORNER RECORD

Agency Index

CR-23-105

Document Number

City of Lathrop County of San Joaquin, CaliforniaBrief Legal Description Stonebridge Ln. & Opal St, Section 23, T.1S., R.6E., M.D.B. & M.**CORNER TYPE****COORDINATES (Optional)**

- ☐ Government Corner ☐ Control
☐ Meander ☐ Property
☐ Rancho ☒ Other

Date of Survey December 7, 2022

N. _____ E. _____

Elevation _____

Units ☐ Metric ☒ U.S. Survey Foot

Horizontal Datum _____

Zone _____ Epoch Date _____

Vertical Datum _____

☐ Complies with Public Resources Code §§8801-8819☐ Complies with Public Resources Code §§8890-8902

PLS Act Ref.:

☐ 8765(d)☒ 8771☐ 8773☐ Other:Corner/
Monument:☒ Left as found☐ Established☐ Rebuilt☐ Pre-Construction☐ Found and tagged☐ Reestablished☒ Referenced☒ Post-Construction

Narrative of corner identified and monument as found, set, reset, replaced, or removed:

☒ See sheet #2 for description(s):**SURVEYOR'S STATEMENT**

This Corner Record was prepared by me or under my direction in conformance with

the Professional Land Surveyors' Act on January 26, 2023

Signed

Douglas F. Banks

P.L.S. or R.C.E. No.

8159**COUNTY SURVEYOR'S STATEMENT**

This Corner Record was received

March 23, 2023

and examined and filed

March 30, 2023

Signed

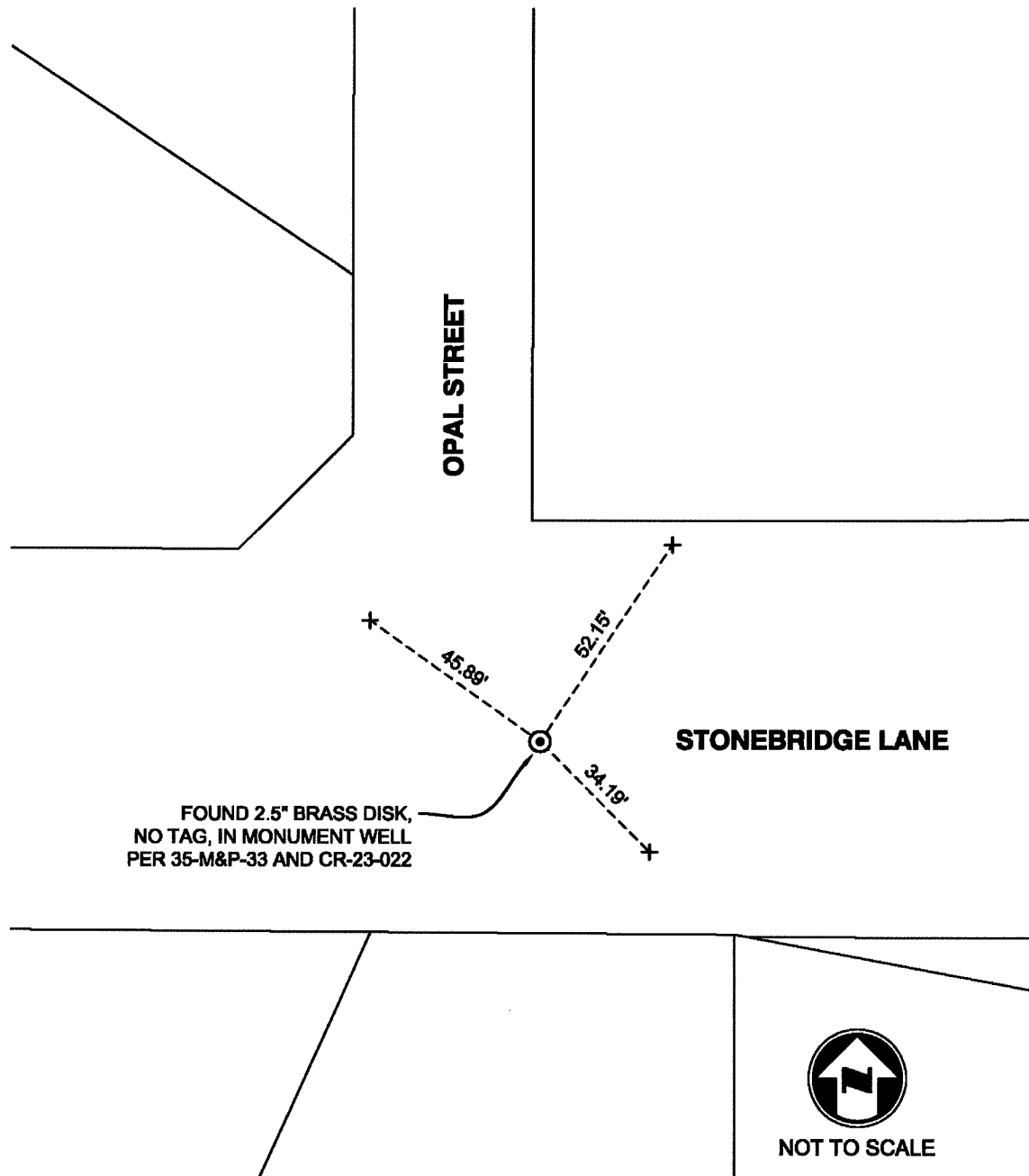
James E. Hart

P.L.S. or R.C.E. No.

8657

Title

County Surveyor**County Surveyor's Comment**

**NOTES:**

- ⊙ FOUND MONUMENT AS NOTED.
- + FOUND SAW CUT "+" IN CONCRETE ON TOP OF CURB, PER CR-23-022
- M&P- BOOK, PAGE, MAPS AND PLATS, SAN JOAQUIN COUNTY RECORDS
- CR- CORNER RECORD, SAN JOAQUIN COUNTY SURVEYOR'S RECORDS