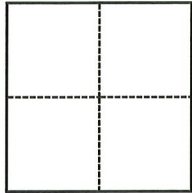


CORNER RECORD

Agency Index CR-23-104
Document Number _____

City of Lathrop County of San Joaquin, California
Brief Legal Description Stonebridge Ln. & Rosewood St, Section 23, T.1S., R.6E., M.D.B.& M.



CORNER TYPE

- Government Corner
- Meander
- Rancho
- Control
- Property
- Other

Date of Survey December 7, 2022

COORDINATES (Optional)

N. _____ E. _____
 Elevation _____
 Units Metric U.S. Survey Foot
 Horizontal Datum _____
 Zone _____ Epoch Date _____
 Vertical Datum _____
 Complies with Public Resources Code §§8801-8819
 Complies with Public Resources Code §§8890-8902

PLS Act Ref.: 8765(d) 8771 8773 Other:
 Corner/Monument: Left as found Established Rebuilt Pre-Construction
 Found and tagged Reestablished Referenced Post-Construction

Narrative of corner identified and monument as found, set, reset, replaced, or removed:
 See sheet #2 for description(s):



SURVEYOR'S STATEMENT

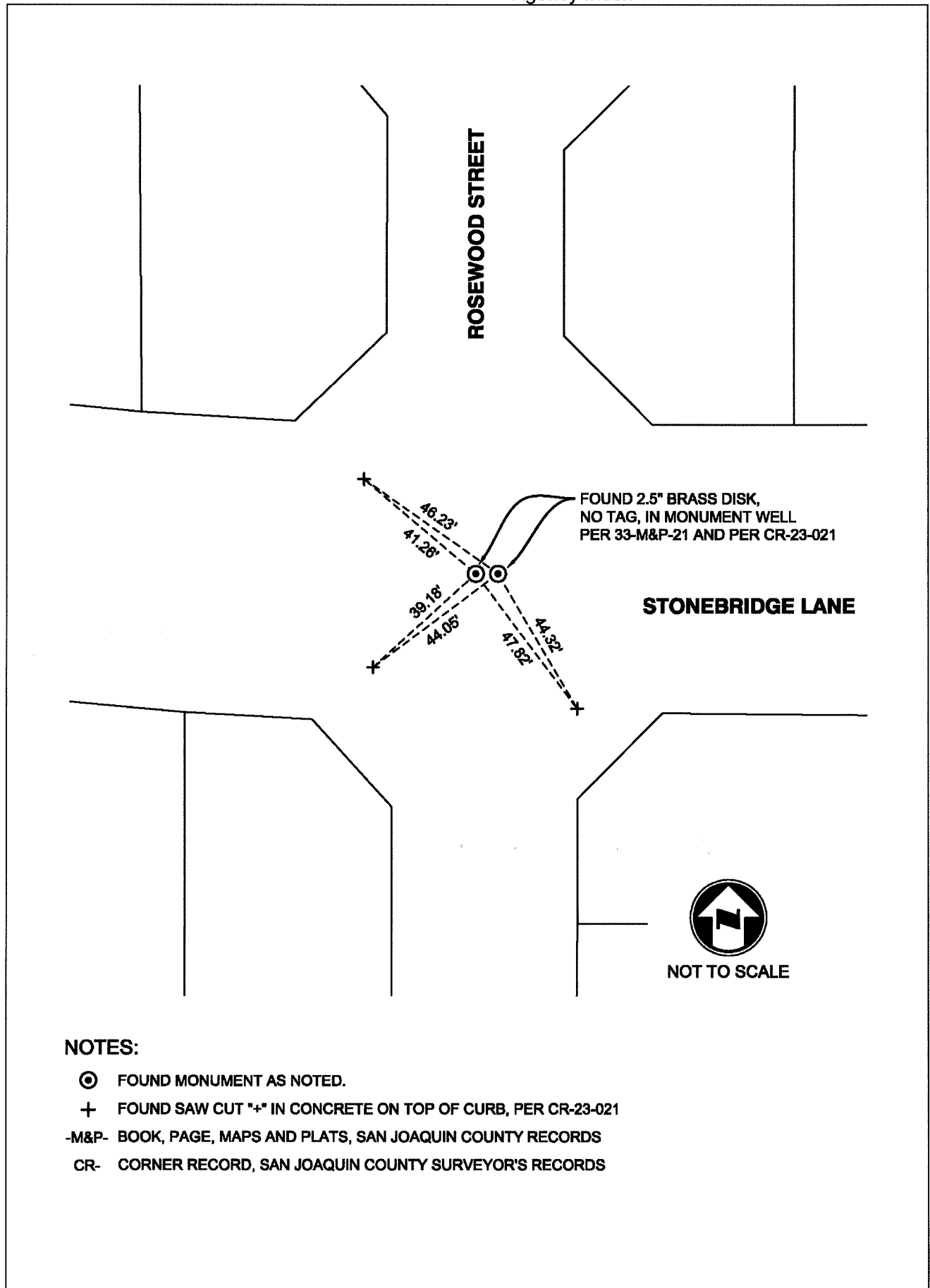
This Corner Record was prepared by me or under my direction in conformance with the Professional Land Surveyors' Act on January 26, 2023.
Signed Douglas F. Banks P.L.S. or R.C.E. No. 8159

COUNTY SURVEYOR'S STATEMENT

This Corner Record was received March 23, 2023
and examined and filed March 30, 2023.
Signed James E Hart P.L.S. or R.C.E. No. 8657
Title County Surveyor



County Surveyor's Comment



NOTES:

- ⊙ FOUND MONUMENT AS NOTED.
- + FOUND SAW CUT "+" IN CONCRETE ON TOP OF CURB, PER CR-23-021
- M&P- BOOK, PAGE, MAPS AND PLATS, SAN JOAQUIN COUNTY RECORDS
- CR- CORNER RECORD, SAN JOAQUIN COUNTY SURVEYOR'S RECORDS