

CORNER RECORD

Agency Index CR-23-095

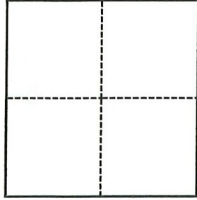
Document Number _____

City of _____ County of SAN JOAQUIN COUNTY, California

Brief Legal Description 1.77 ACRE PROPERTY AS SHOWN ON R.S. 08-79.

CORNER TYPE

COORDINATES (Optional)



- Government Corner
- Meander
- Rancho
- Control
- Property
- Other

N. _____ E. _____

Elevation _____

Units Metric U.S. Survey Foot

Horizontal Datum _____

Zone _____ Epoch Date _____

Vertical Datum _____

Complies with Public Resources Code §§8801-8819

Complies with Public Resources Code §§8890-8902

Date of Survey January 17, 2023

PLS Act Ref.: 8765(d) 8771 8773 Other:

Corner/Monument: Left as found Established Rebuilt Pre-Construction

Found and tagged Reestablished Referenced Post-Construction

Narrative of corner identified and monument as found, set, reset, replaced, or removed:

See sheet #2 for description(s):

CORNER RECORD TO REESTABLISH PROPERTY CORNER WHICH WAS OBLITERATED.

SURVEYOR'S STATEMENT

This Corner Record was prepared by me or under my direction in conformance with

the Professional Land Surveyors' Act on March 9, 2023

Signed Zachary C. Wong P.L.S. or R.C.E. No. LS 7600



COUNTY SURVEYOR'S STATEMENT

This Corner Record was received March 13, 2023

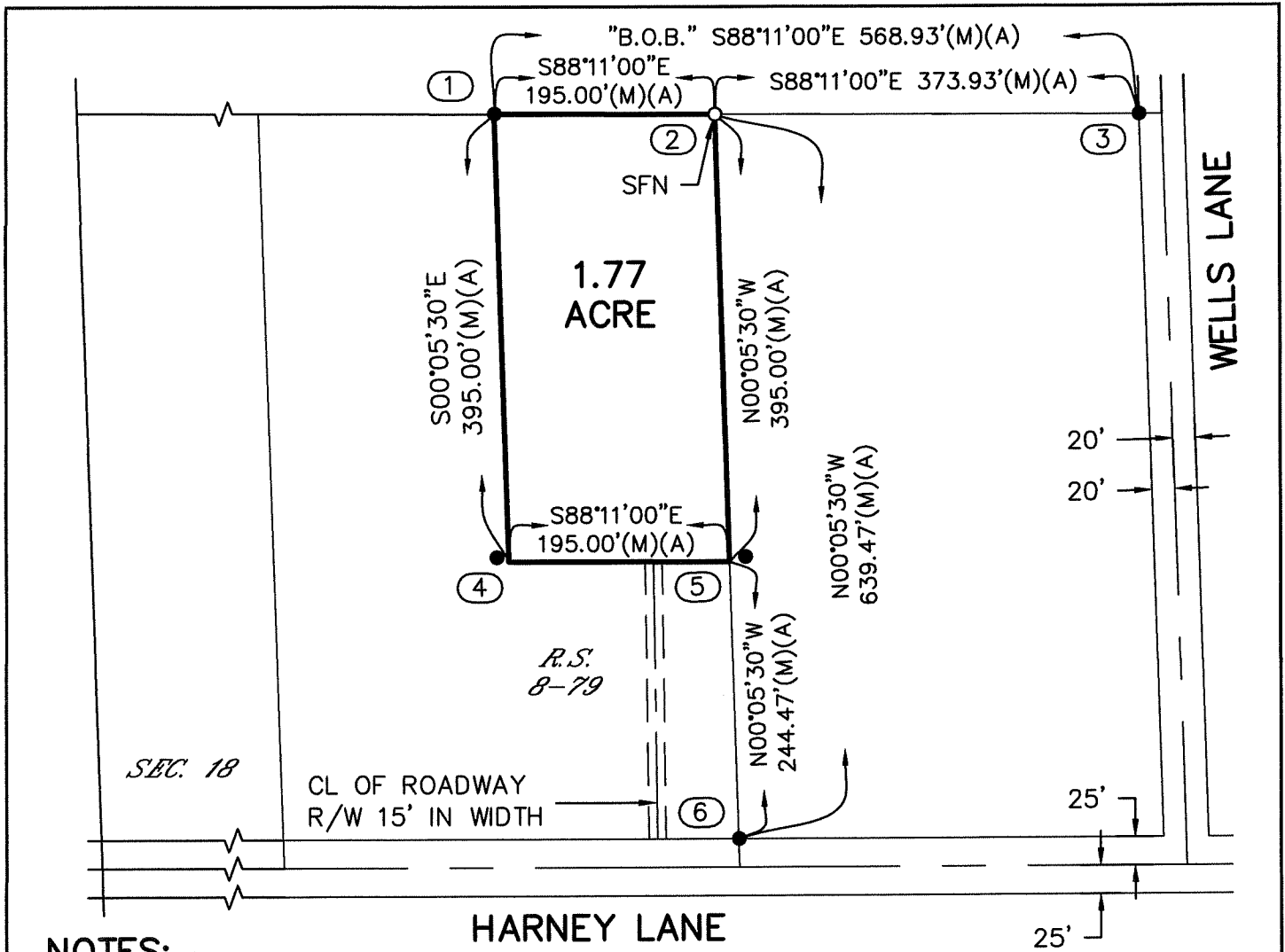
and examined and filed March 30, 2023

Signed James E. Hart P.L.S. or R.C.E. No. 8657

Title County Surveyor

County Surveyor's Comment



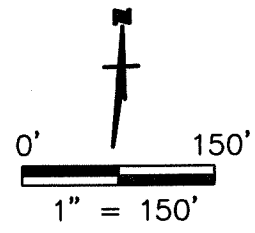


NOTES:

- ① FD. I. ROD (A).
- ② SET 3/4" X 30" I. PIN TAGGED L.S. 7600.
- ③ FD. AXLE (A).
- ④ FD. I. ROD (A). BENT. N41°43'55"W 0.17' FROM PROPERTY CORNER.
- ⑤ FD. I. ROD (A). BENT. N57°14'10"E 0.12' FROM PROPERTY CORNER.
- ⑥ FD. AXLE (A).

LEGEND:

- B.O.B. BASIS OF BEARINGS
- CL CENTER LINE
- FD. FOUND
- I IRON
- R.S. RECORD OF SURVEY, BOOK-PAGE
- SFN SEARCHED, FOUND NOTHING
- S.J.C.R. SAN JOAQUIN COUNTY RECORDS
- FOUND MONUMENT AS NOTED
- SET 3/4" X 30" I. PIN TAGGED L.S. 7600

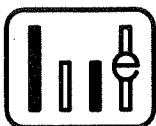


DESCRIPTION:

THIS DOCUMENT IS FOR THE PURPOSE OF RESETTING ANY MISSING OR OBLITERATED CORNERS FROM 1.77-ACRE PARCEL, AS SHOWN IN BOOK 8 OF SURVEYS, PAGE 79, SAN JOAQUIN COUNTY RECORDS.

REFERENCE:

(A) R.S. 8-79, S.J.C.R.



WONG ENGINEERS, INC.

4578 FEATHER RIVER DRIVE, SUITE A
 STOCKTON, CALIFORNIA (209) 476-0011
 MARCH 9, 2023 2 OF 2