

CORNER RECORD

Agency Index CR-23-094

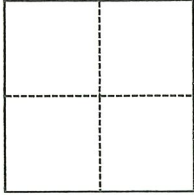
Document Number _____

City of Tracy, unincorporated County of San Joaquin, California

Brief Legal Description Portion of Section 35, Township 2 South, Range 4 East, MDBM and Section 2, Township 3 South, Range 4 East, MDBM

CORNER TYPE

COORDINATES (Optional)



- Government Corner
- Meander
- Rancho
- Control
- Property
- Other

Date of Survey 12/06/21

N. _____ E. _____

Elevation _____

Units Metric U.S. Survey Foot

Horizontal Datum _____

Zone _____ Epoch Date _____

Vertical Datum _____

Complies with Public Resources Code §§8801-8819

Complies with Public Resources Code §§8890-8902

PLS Act Ref.: 8765(d) 8771 8773 Other:

Corner/Monument: Left as found Established Rebuilt Pre-Construction

Found and tagged Reestablished Referenced Post-Construction

Narrative of corner identified and monument as found, set, reset, replaced, or removed:

See sheet #2 for description(s):

SURVEYOR'S STATEMENT

This Corner Record was prepared by me or under my direction in conformance with the Professional Land Surveyors' Act on January 1, 2022

Signed Ekundayo Sowumi P.L.S. or R.C.E. No. 22573



COUNTY SURVEYOR'S STATEMENT

This Corner Record was received March 8, 2023

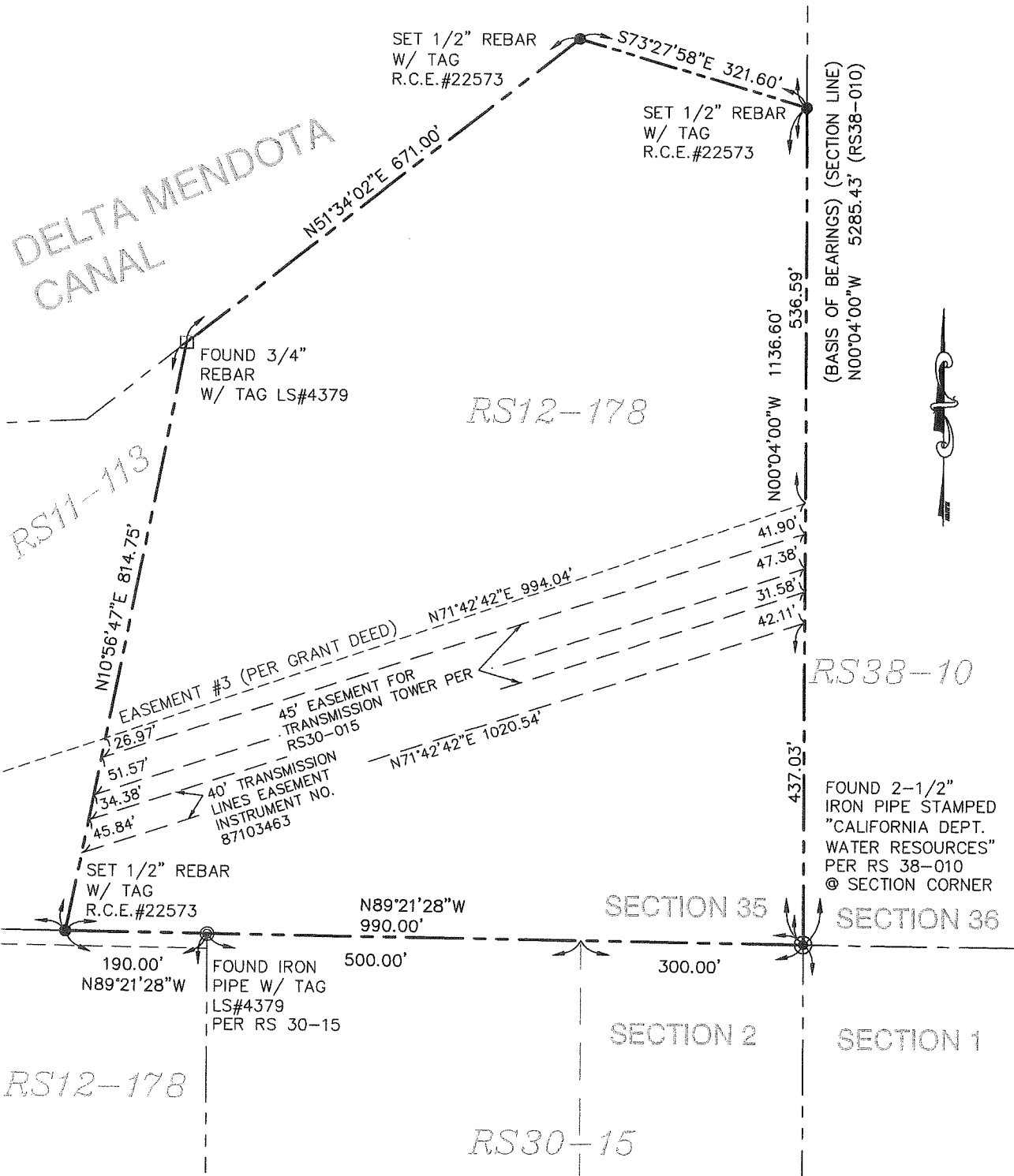
and examined and filed March 30, 2023

Signed James E Hart P.L.S. or R.C.E. No. 8657

Title County Surveyor

County Surveyor's Comment





ABBREVIATIONS AND LEGEND

- FOUND MONUMENT AS NOTED
- ◎ FOUND IRON PIPE W/ TAG LS#4379
- SET 1/2"x18" REBAR WITH CAP R.C.E.#22573
- FOUND 3/4" REBAR WITH CAP LS#4379
- PROPERTY LINE
- MONUMENT LINE
- EASEMENT LINE
- OLD LOT LINE
- SFNF SEARCH FOR NOT FOUND
- R.C.E. REGISTER CIVIL ENGINEER
- PM PARCEL MAP, SJCR
- RS RECORD OF SURVEY, SJCR
- CR CORNER RECORD, SJCR
- SJCR SAN JOAQUIN COUNTY RECORDS
- SJCSR SAN JOAQUIN COUNTY SURVEYOR'S RECORDS

CORNER RECORD

26722 HANSEN ROAD, TRACY CA 95377
 APN 209-230-05

JANUARY 1, 2022

SCALE: 1"=200'