

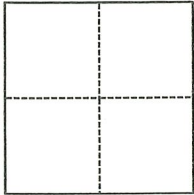
CORNER RECORD

Agency Index CR-23-092
Document Number _____

City of Tracy, unincorporated County of San Joaquin, California
Brief Legal Description Portion of Section 35, Township 2 South, Range 4 East, MDBM and Section 2, Township 3 South, Range 4 East, MDBM

CORNER TYPE

COORDINATES (Optional)



- Government Corner
- Meander
- Rancho
- Control
- Property
- Other

Date of Survey 12/06/21

N. _____ E. _____
 Elevation _____
 Units Metric U.S. Survey Foot
 Horizontal Datum _____
 Zone _____ Epoch Date _____
 Vertical Datum _____
 Complies with Public Resources Code §§8801-8819
 Complies with Public Resources Code §§8890-8902

PLS Act Ref.: 8765(d) 8771 8773 Other:
 Corner/Monument: Left as found Established Rebuilt Pre-Construction
 Found and tagged Reestablished Referenced Post-Construction

Narrative of corner identified and monument as found, set, reset, replaced, or removed:
 See sheet #2 for description(s):

SURVEYOR'S STATEMENT

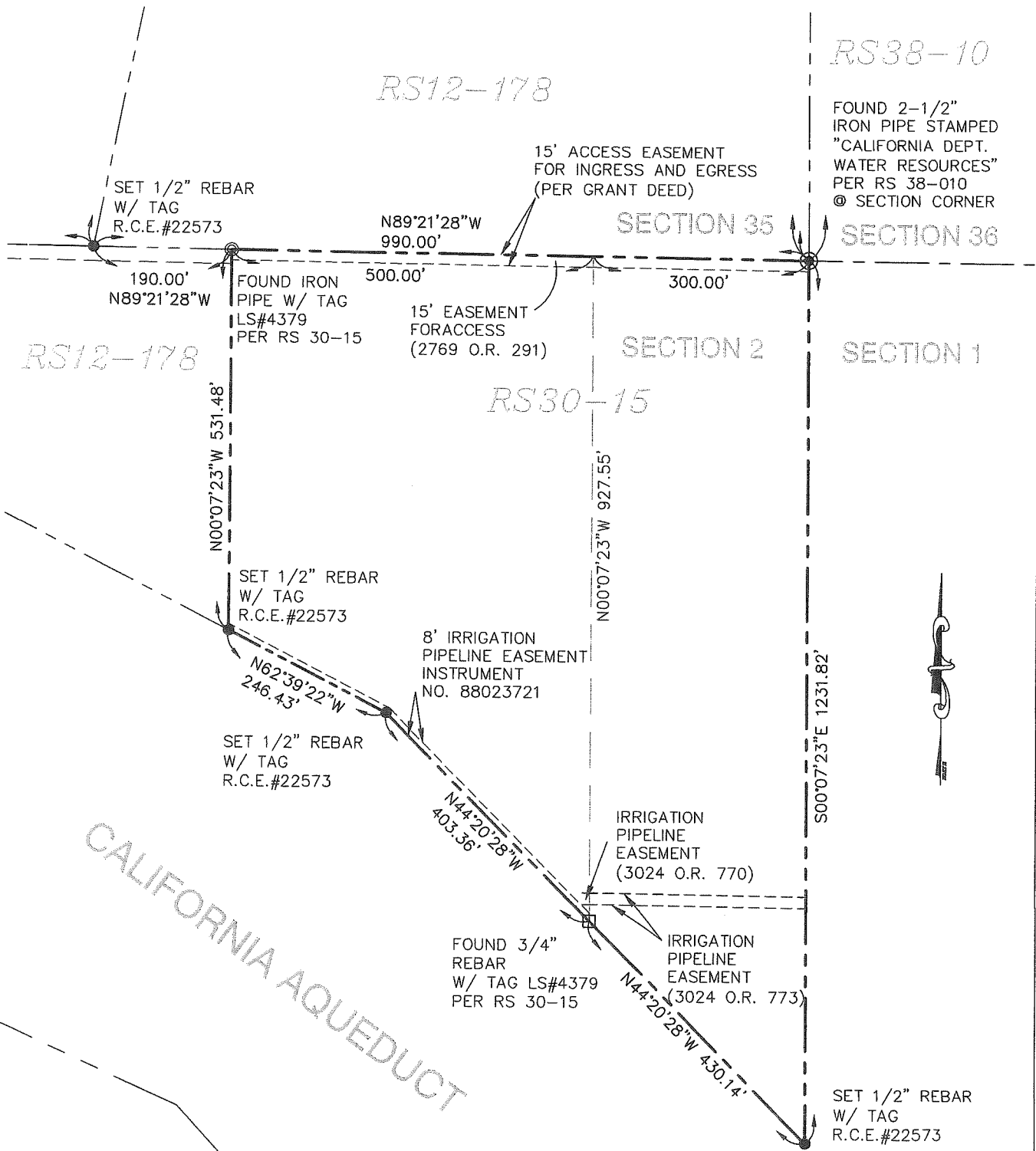
This Corner Record was prepared by me or under my direction in conformance with
 the Professional Land Surveyors' Act on January 1, 2022
 Signed *Ekundayo Sowumi* P.L.S. or R.C.E. No. 22573



COUNTY SURVEYOR'S STATEMENT

This Corner Record was received March 8, 2023
 and examined and filed March 30, 2023
 Signed *James E. Hart* P.L.S. or R.C.E. No. 8657
 Title County Surveyor
 County Surveyor's Comment _____





ABBREVIATIONS AND LEGEND

- ⊙ FOUND MONUMENT AS NOTED
- ⊙ FOUND IRON PIPE W/ TAG LS#4379
- SET 1/2"x18" REBAR WITH CAP R.C.E.#22573
- ⊠ FOUND 3/4" REBAR WITH CAP LS#4379
- PROPERTY LINE
- MONUMENT LINE
- EASEMENT LINE
- OLD LOT LINE
- SFNF SEARCH FOR NOT FOUND
- R.C.E. REGISTER CIVIL ENGINEER
- PM PARCEL MAP, SJCR
- RS RECORD OF SURVEY, SJCR
- CR CORNER RECORD, SJCSR
- SJCR SAN JOAQUIN COUNTY RECORDS
- SJCSR SAN JOAQUIN COUNTY SURVEYOR'S RECORDS
- O.R. OFFICIAL RECORDS, SJCR

CORNER RECORD

26722 HANSEN ROAD, TRACY CA 95377

APN 251-040-17, & 251-040-06

JANUARY 1, 2022

SCALE: 1"=200'