

# CORNER RECORD

Agency Index

CR-23-078

Document Number

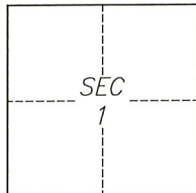
City of LodiCounty of San Joaquin

, California

Brief Legal Description Alley on S. Central Avenue, between Walnut Street and Oak Street

## CORNER TYPE

## COORDINATES (Optional)

T3N/R6E

- ☐ Government Corner ☐ Control  
☐ Meander ☐ Property  
☐ Rancho ☒ Other

Date of Survey January 9, 2023

N. \_\_\_\_\_ E. \_\_\_\_\_

Elevation \_\_\_\_\_

Units ☐ Metric ☐ U.S. Survey Foot

Horizontal Datum \_\_\_\_\_

Zone \_\_\_\_\_ Epoch Date \_\_\_\_\_

Vertical Datum \_\_\_\_\_

☐ Complies with Public Resources Code §§8801-8819☐ Complies with Public Resources Code §§8890-8902

PLS Act Ref.:

☐ 8765(d)☒ 8771☐ 8773☐ Other:

Corner/

☐ Left as found☐ Established☐ Rebuilt☐ Pre-Construction

Monument:

☐ Found and tagged☒ Reestablished☐ Referenced☒ Post-Construction

Narrative of corner identified and monument as found, set, reset, replaced, or removed:

☒ See sheet #2 for description(s):

NAIL AND WASHER, IN PAVEMENT, STAMPED "LS 8040", REESTABLISHED USING HORIZONTAL CONTROL FROM PRE-CONSTRUCTION CORNER RECORD CR-22-232, OF SAN JOAQUIN COUNTY SURVEYOR'S RECORDS

## SURVEYOR'S STATEMENT

This Corner Record was prepared by me or under my direction in conformance with

the Professional Land Surveyors' Act on February 9, 2023

Signed

P.L.S. or R.C.E. No.

8040

## COUNTY SURVEYOR'S STATEMENT

This Corner Record was received

March 6, 2023

and examined and filed

March 23, 2023

Signed

P.L.S. or R.C.E. No.

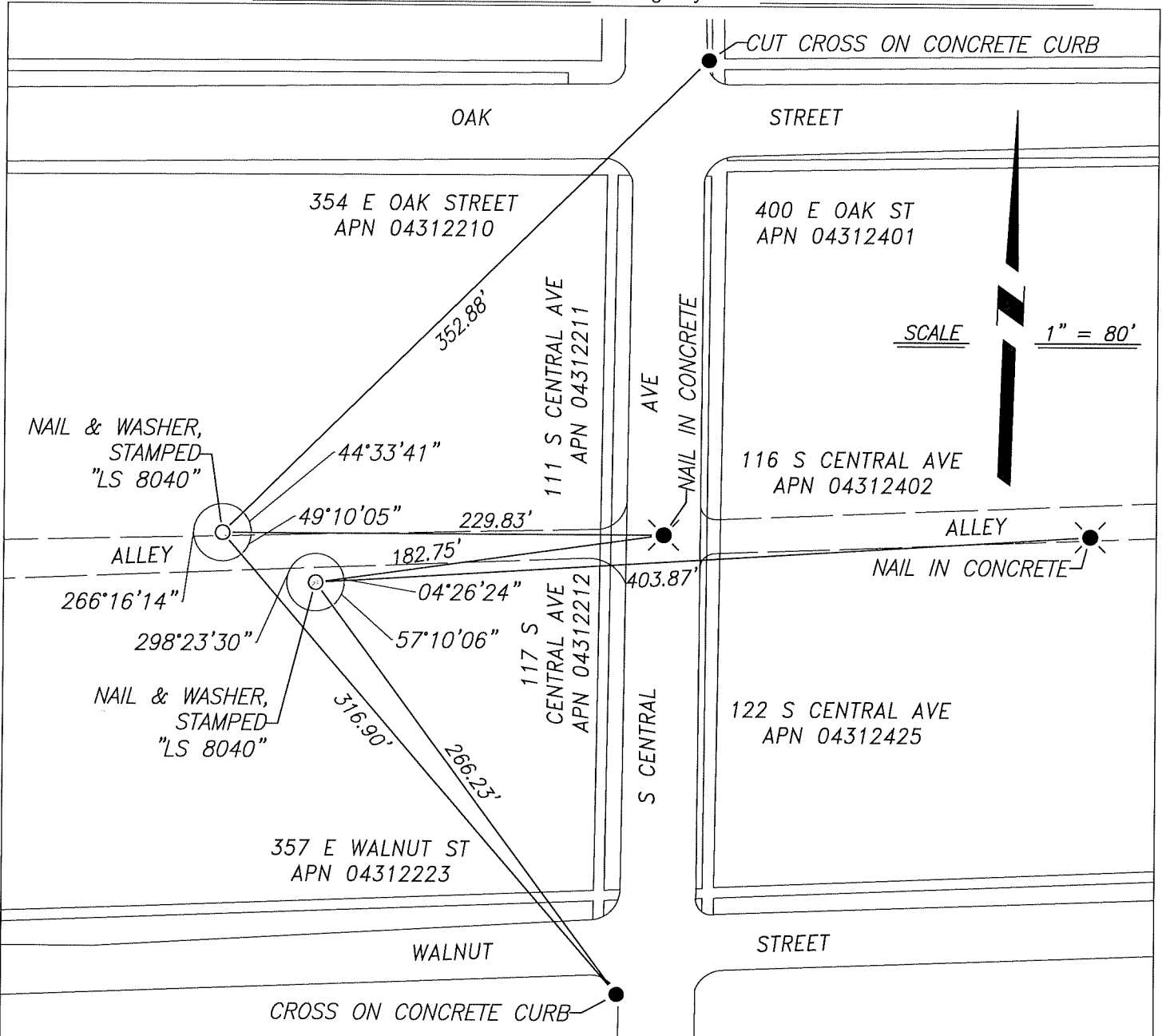
8657

Title

County Surveyor

County Surveyor's Comment





## REFERENCE

(A) CORNER RECORD CR-22-232, IN THE CITY OF LODI, FILED SEPTEMBER 8, 2022, SAN JOAQUIN COUNTY SURVEYOR'S RECORDS

## LEGEND

- SET MONUMENT, NAIL & WASHER, STAMPED "LS 8040"
- FOUND CUT CROSS ON CONCRETE AS REFERENCE POINT
- ✕ FOUND NAIL IN ASPHALT AS REFERENCE POINT

## NOTES

1. ALL REFERENCES ARE SAN JOAQUIN COUNTY RECORDS