

CORNER RECORD

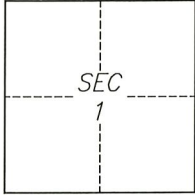
Agency Index CR-23-077

Document Number _____

City of LodiCounty of San Joaquin, CaliforniaBrief Legal Description Alley on Washington Street, between Walnut Street and Oak Street

CORNER TYPE

COORDINATES (Optional)



T3N/R6E

- Government Corner Control
 Meander Property
 Rancho Other

Date of Survey January 9, 2023

N. _____ E. _____

Elevation _____

Units Metric U.S. Survey Foot

Horizontal Datum _____

Zone _____ Epoch Date _____

Vertical Datum _____

 Complies with Public Resources Code §§8801-8819 Complies with Public Resources Code §§8890-8902PLS Act Ref.: 8765(d) 8771 8773 Other:Corner/Monument: Left as found Established Rebuilt Pre-Construction Found and tagged Reestablished Referenced Post-Construction

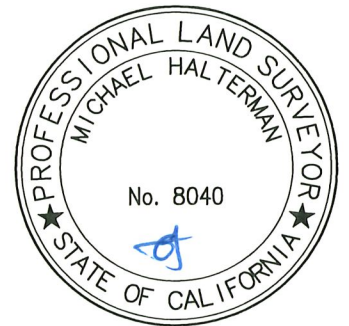
Narrative of corner identified and monument as found, set, reset, replaced, or removed:

 See sheet #2 for description(s):

NAIL AND WASHER, IN PAVEMENT, STAMPED "LS 8040", REESTABLISHED USING HORIZONTAL CONTROL FROM PRE-CONSTRUCTION CORNER RECORD CR-22-231, OF SAN JOAQUIN COUNTY SURVEYOR'S RECORDS

SURVEYOR'S STATEMENT

This Corner Record was prepared by me or under my direction in conformance with

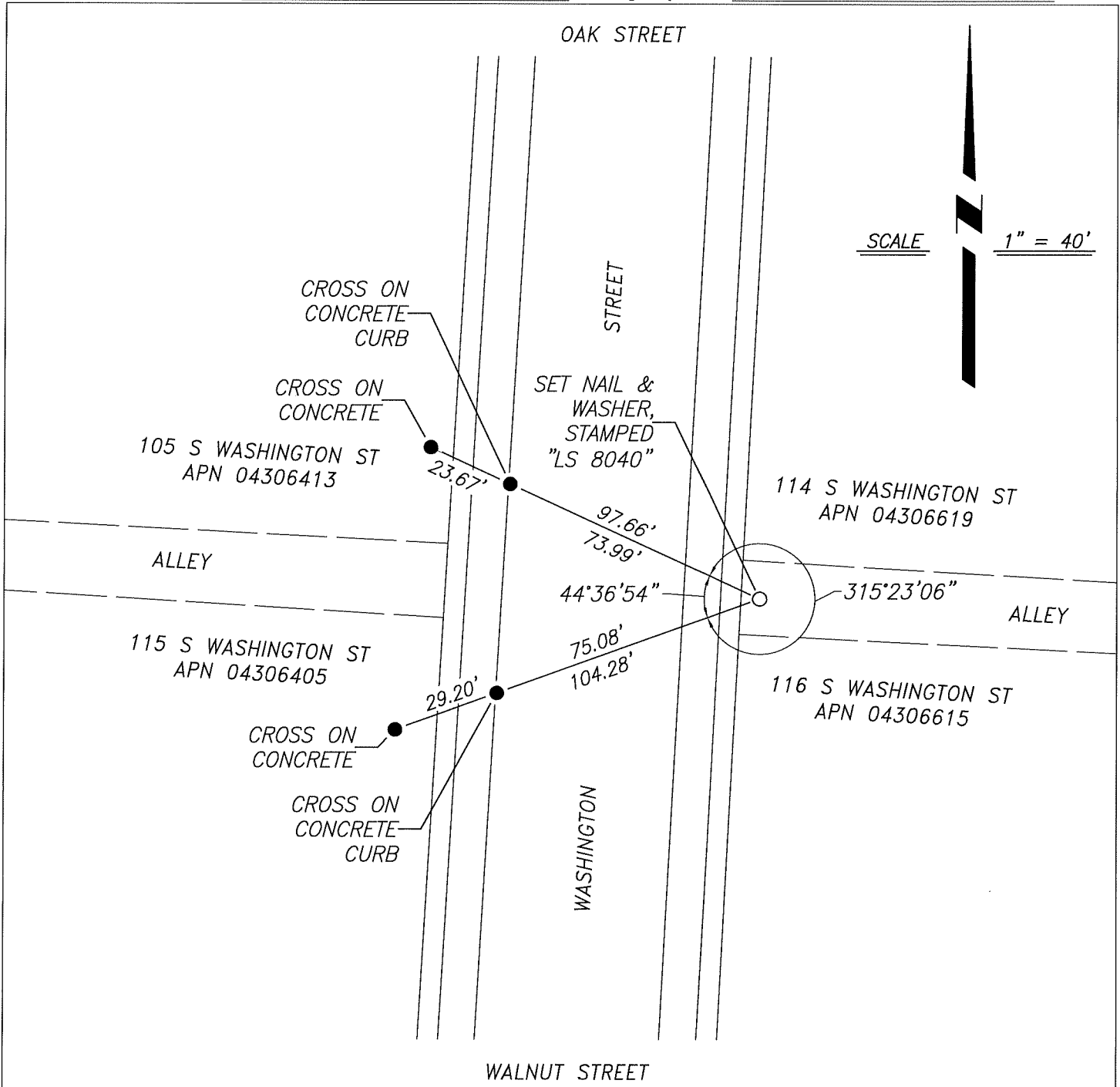
the Professional Land Surveyors' Act on February 9, 2023Signed [Signature] P.L.S. or R.C.E. No. 8040

COUNTY SURVEYOR'S STATEMENT

This Corner Record was received March 6, 2023and examined and filed March 23, 2023Signed James E. Hart P.L.S. or R.C.E. No. 8657Title County Surveyor

County Surveyor's Comment _____





REFERENCE

(A) CORNER RECORD CR-22-231, IN THE CITY OF LODI, FILED SEPTEMBER 8, 2022, SAN JOAQUIN COUNTY SURVEYOR'S RECORDS

LEGEND

- SET MONUMENT, NAIL & WASHER, STAMPED "LS 8040"
- FOUND CUT CROSS ON CONCRETE AS REFERENCE POINT

NOTES

1. ALL REFERENCES ARE SAN JOAQUIN COUNTY RECORDS