

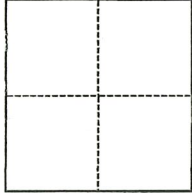
# CORNER RECORD

Agency Index CR-23-076  
Document Number \_\_\_\_\_

City of STOCKTON County of SAN JOAQUIN, California  
Brief Legal Description PARCEL 4, P.M. 23-118, S.J.C.R.

### CORNER TYPE

### COORDINATES (Optional)



- Government Corner
- Meander
- Rancho
- Control
- Property
- Other

Date of Survey February 14, 2023

N. \_\_\_\_\_ E. \_\_\_\_\_  
 Elevation \_\_\_\_\_  
 Units  Metric  U.S. Survey Foot  
 Horizontal Datum \_\_\_\_\_  
 Zone \_\_\_\_\_ Epoch Date \_\_\_\_\_  
 Vertical Datum \_\_\_\_\_  
 Complies with Public Resources Code §§8801-8819  
 Complies with Public Resources Code §§8890-8902

PLS Act Ref.:  8765(d)  8771  8773  Other:  
 Corner/Monument:  Left as found  Established  Rebuilt  Pre-Construction  
 Found and tagged  Reestablished  Referenced  Post-Construction

Narrative of corner identified and monument as found, set, reset, replaced, or removed:  
 See sheet #2 for description(s):

SEE PAGE 2 OF 2 FOR EXHIBIT MAP SHOWING MONUMENTS FOUND AND SET.

### SURVEYOR'S STATEMENT

This Corner Record was prepared by me or under my direction in conformance with  
 the Professional Land Surveyors' Act on February 21, 2023  
 Signed Walter John Shoup P.L.S. or R.C.E. No. L-7736



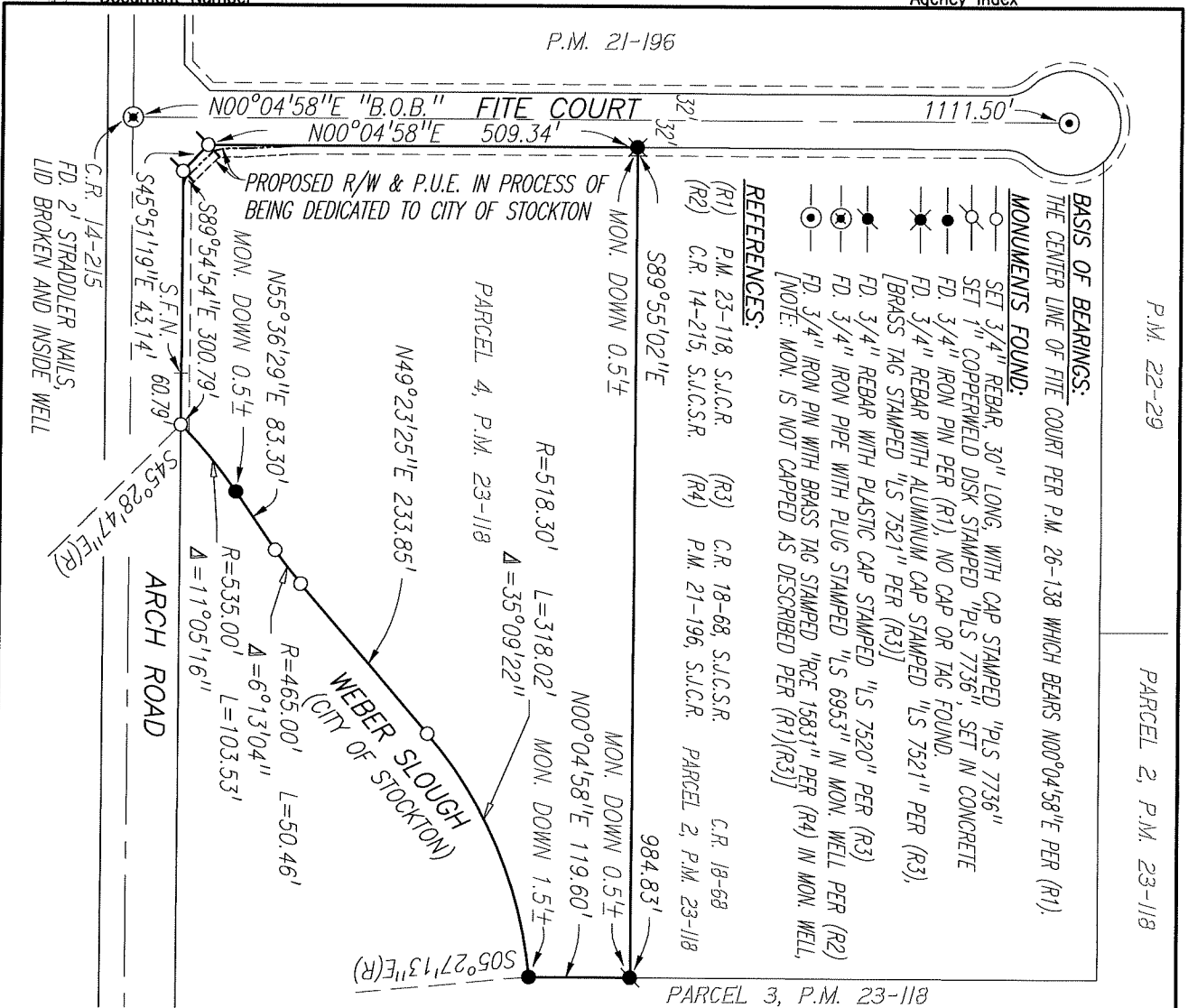
### COUNTY SURVEYOR'S STATEMENT

This Corner Record was received February 27, 2023  
 and examined and filed March 16, 2023  
 Signed James E. Hart P.L.S. or R.C.E. No. 8657  
 Title County Surveyor



County Surveyor's Comment

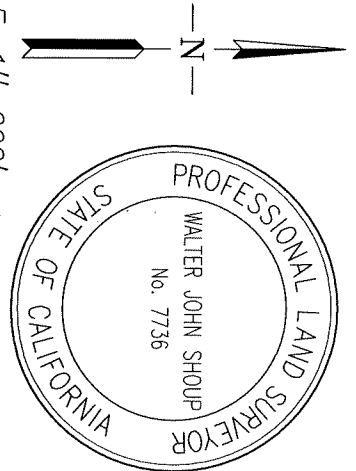
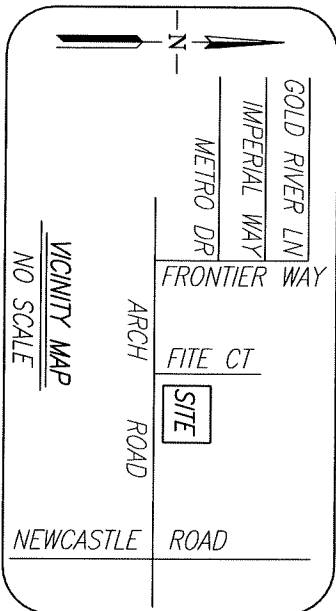
P.M. 21-196



P.M. 22-29

PARCEL 2, P.M. 23-118

PARCEL 3, P.M. 23-118



Scale: 1"=200'  
Job No.: 22-131

**CORNER RECORD**  
**EXHIBIT MAP**

Date: 02/21/2023  
DWG: 22131CR-POST